

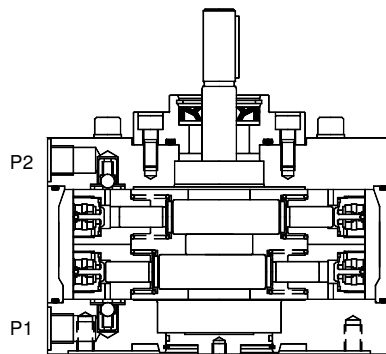
RADIAL PISTON DOUBLE PUMPS MODEL : 2RPC

1 Description

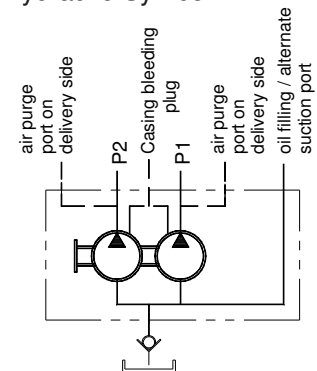
Radial piston arrangement with 3,5 or 7 pumping elements per section.
Oil immersed or external mounting type.
Face mounting.
Valve controlled.
Fixed delivery.
Bi-directional rotation of shaft.
Extension shaft for through drive
With extension bracket assembly for coupling low pressure pump having standard flange.



2 Section

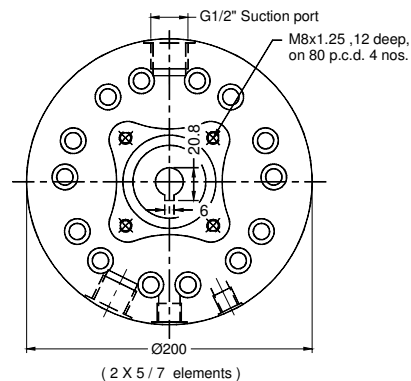
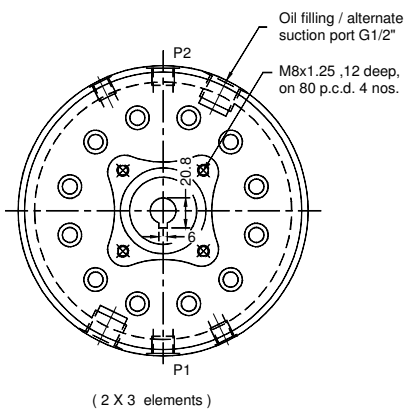
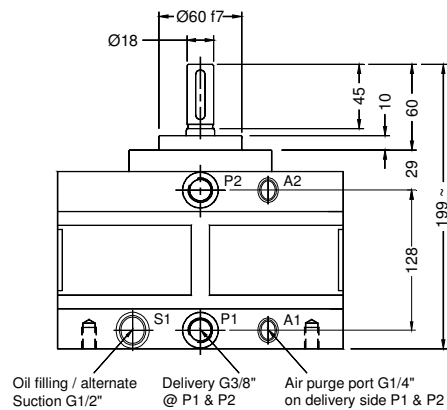
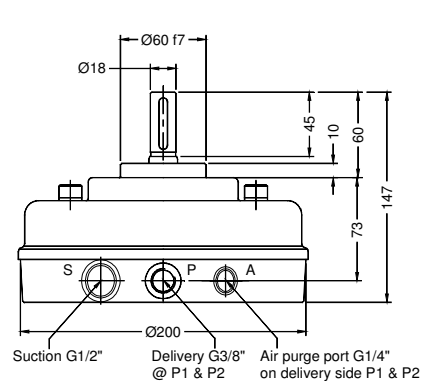


Hydraulic Symbol



3 Unit Dimensions

Dimensions in mm.



PRISM HYDRAULICS PVT. LTD.

RADIAL PISTON DOUBLE PUMPS MODEL : 2RPC

4 Tehnical Specifications

Designation	2RPC,basic radil piston double pump group
Design	Radial piston, valve controlled
No.of Pistons	3, 5 or 7 at each port section depending upon flow requirement
Mounting	Face mounting. (Factory standard)
Direction of rotation	2RPC ...Can be run in either directions 2RPCE ...Depends upon direction of rotation of low pr.pump
Connection	Suction ..G3/4 female Suction head ---- 300 mm max. Suction pipe size ----- 20 o.d.x 3 th(Straight pipe) Delivery .. Port P1 & P2 - G3/8 female.
Speed range	300 to 2000 rpm
Hydraulic medium	Mineral oil
Viscosity range	16 to 32 cSt
Temperature range	-10 to +80 degree celcius (Do not exceed viscosity limits at extreme temperatures for efficient running of pump)
Fluid cleanliness requirement	As per ISO code 16/13
Performance	Refer Table no.1
Mass	19.8 kg.

Table No.1

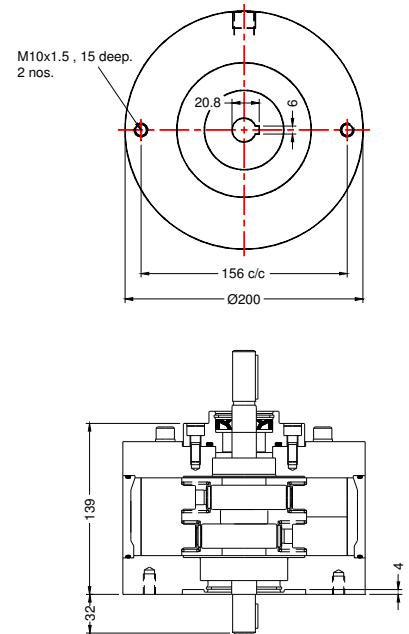
Code No.	Geometrical Displacement CC / REV	Rated Output @ 1450 rpm l / min.	Operating pressure bar	INPUT POWER REQUIREMENT(@1450 rpm)																											
				50 bar		100 bar		150 bar		200 bar		250 bar		300 bar		350 bar		400 bar		450 bar		500 bar		550 bar		600 bar		650 bar		700 bar	
				KW	HP	KW	HP	KW	HP	KW	HP	KW	HP	KW	HP	KW	HP	KW	HP	KW	HP	KW	HP	KW	HP	KW	HP	KW	HP	KW	HP
3Z	0.69	0.9	700	0.1	0.13	0.19	0.26	0.29	0.39	0.39	0.52	0.48	0.64	0.58	0.78	0.68	0.91	0.77	1.03	0.87	1.17	0.96	1.29	1.06	1.4	1.16	1.55	1.25	1.68	1.35	1.81
5Z	1.15	1.5		0.16	0.22	0.32	0.43	0.48	0.64	0.64	0.86	0.80	1.07	0.96	1.29	1.13	1.52	1.29	1.73	1.45	1.94	1.61	2.16	1.77	2.37	1.93	2.59	2.09	2.8	2.25	3.02
7Z	1.61	2.2		0.23	0.31	0.45	0.60	0.68	0.91	0.90	1.21	1.13	1.52	1.35	1.81	1.58	2.12	1.80	2.41	2.03	2.72	2.25	3.02	2.48	3.32	2.70	3.62	2.93	3.93	3.15	4.22
3A	1.21	1.5	550	0.17	0.23	0.3	0.5	0.5	0.7	0.7	0.9	0.9	1.2	1	1.4	1.2	1.6	1.4	1.8	1.6	2.1	1.7	2.3	1.9	2.5						
5A	2.01	2.6		0.29	0.38	0.6	0.8	0.9	1.2	1.2	1.5	1.4	1.9	1.7	2.3	2	2.7	2.3	3.1	2.6	3.5	2.9	3.8	3.2	4.2						
7A	2.81	3.7		0.4	0.54	0.8	1.1	1.2	1.6	1.6	2.2	2	2.7	2.4	3.2	2.8	3.8	3.2	4.3	3.6	4.8	4	5.4	4.4	5.9						
3B	1.88	2.5	450	0.27	0.36	0.5	0.7	0.8	1.1	1.1	1.4	1.3	1.8	1.6	2.2	1.9	2.5	2.1	2.9	2.4	3.2										
5B	3.14	4.2		0.45	0.6	0.9	1.2	1.3	1.8	1.8	2.4	2.2	3	2.7	3.6	3.1	4.2	3.6	4.8	4	5.4										
7B	4.4	5.8		0.63	0.84	1.3	1.7	1.9	2.5	2.5	3.4	3.1	4.2	3.8	5	4.4	5.9	5	6.7	5.6	7.5										
3C	2.71	3.7	350	0.39	0.52	0.8	1	1.2	1.6	1.5	2.1	1.9	2.6	2.3	3.1	2.7	3.6														
5C	4.52	6.2		0.64	0.86	1.3	1.7	1.9	2.6	2.6	3.5	3.2	4.3	3.9	5.2	4.5	6														
7C	6.33	8.6		0.9	1.21	1.8	2.4	2.7	3.6	3.6	4.8	4.5	6	5.4	7.2	6.3	8.5														
3D	3.19	4.3	300	0.45	0.61	0.9	1.2	1.4	1.8	1.8	2.4	2.3	3	2.7	3.6																
5D	5.31	7.2		0.76	1.01	1.5	2	2.3	3	3	4.1	3.8	5.1	4.5	6.1																
7D	7.43	10		1.06	1.42	2.1	2.8	3.2	4.3	4.2	5.7	5.3	7.1	6.3	8.5																
3E	3.69	5	250	0.53	0.7	1.1	1.1	1.6	2.1	2.1	2.8	2.6	3.5																		
5E	6.16	8.4		0.88	1.17	1.8	2.4	2.6	3.5	3.5	4.7	4.4	5.9																		
7E	8.62	11.7		1.23	1.64	2.5	3.3	3.7	4.9	4.9	6.6	6.1	8.2																		
3F	4.24	5.8	200	0.6	0.81	1.2	1.6	1.8	2.4	2.4	3.2																				
5F	7.07	9.7		1	1.35	2	2.7	3	4	4	5.4																				
7F	9.9	13.6		1.41	1.89	2.8	3.8	4.2	5.7	5.6	7.5																				

Torque limitation :- The sum of torque used for P1 port and P2 port end section should not exceed 70 Nm (11 kw at 1450 rpm) at any given instance.

RADIAL PISTON DOUBLE PUMPS MODEL : 2RPC

5 Accessories

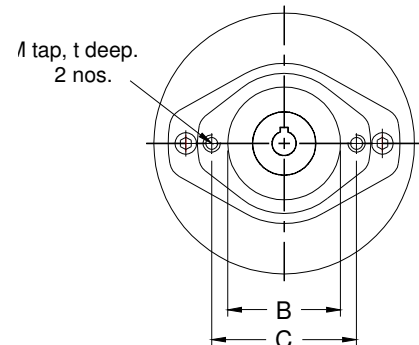
5.1 Extension shaft (for through drive)



Note :- Torque limitation :- The sum of the torque used for the piston pump and torque used at extended shaft end should not exceed 75 Nm (11 kw at 1450 rpm)

5.2 Extension bracket assemblies (For coupling low pressure pump)

- Consists of -- Extension bracket
- Set of flexible coupling
- Mounting bolt kit
- Dimensions -- Refer Table no.2

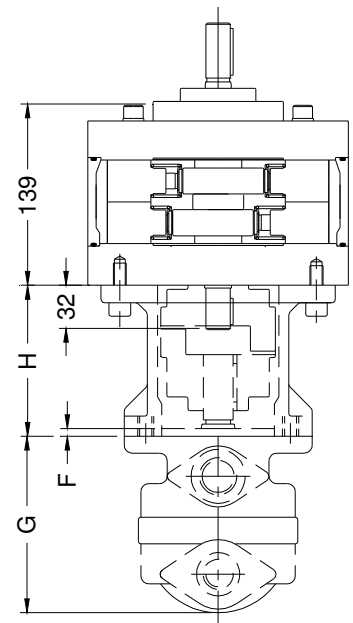


Code No.	B	C	F	H	M	t
B1	82.6	106.4	30	120	M10	15
B2	101.6	146	10	114	M12	18
B3	127	181	14	138	M16	20

Note : 1.For dimensions 'G' please refer pump manufacturer's catalogue.

2.Torque limitation :Refer note above.

3.Flexible coupling can be supplied with bored & key way machined coupling half to suit a specific brand & model of pump against specific request.



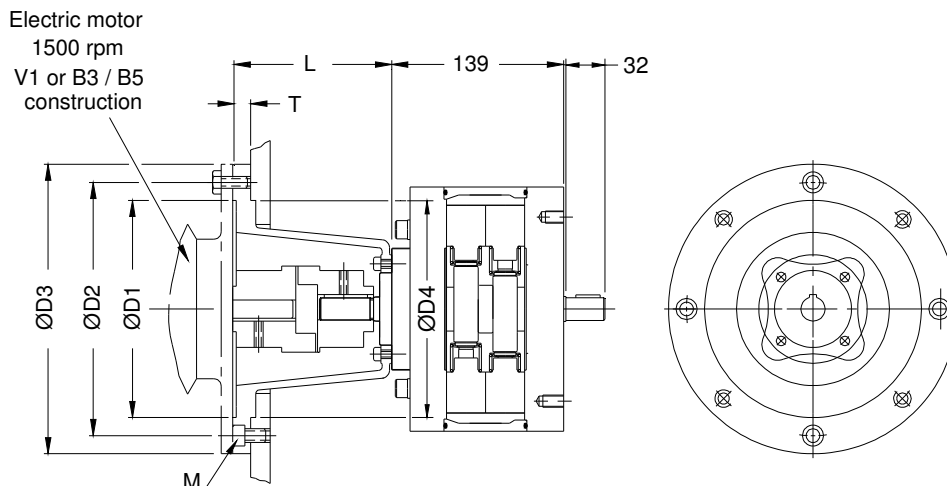
PRISM HYDRAULICS PVT. LTD.

RADIAL PISTON DOUBLE PUMPS MODEL : 2RPC

5.3 Bell housing assemblies (For coupling pump to electric motor)

- Consists of : Bell Housing
- Flexible coupling set
- Bolt kits for pump, Motor & Bell housing

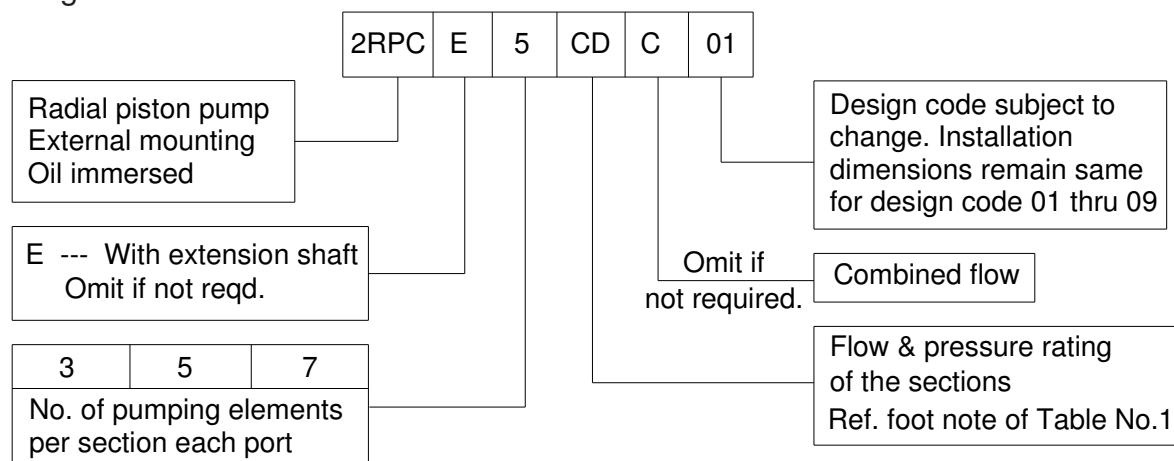
Dimensions : Refer table no.3



Ordering code	ØD1	ØD2	ØD3	ØD4	T	L	M x Nos.	Suitable for electric motor of 1500 rpm. V1 construction.	
								Flow	Pressure
BHP/1								0.75	1
BHP/1.5	130	165	200	130	16	130	M10x4	1.1	1.5
BHP/2								1.5	2
BHP/3	180	215	250	180	16	145	M10x4	2.2	3
BHP/5								3.75	5
BHP/7.5	230	265	300	230	16	170	M10x4	5.6	7.5
BHP/10								7.5	10
BHP/12.5	250	300	350	250	20	200	M10x4	9.3	12.5
BHP/15								11	15

Note :- Bell housing assembly to be ordered separately.

6 Ordering code



Note:- A double pump of model 2RPC5CD, for example, will have 5 pumping elements of "C" flow & pressure rating at it's P1 port end section & 5 pumping elements of "D" flow & pressure rating at it's P2 port end section