

FEED AND POWER HAND PUMP MODEL : HP2813

Description

Automatic change-over from high discharge at low pressure to low discharge at high pressure.

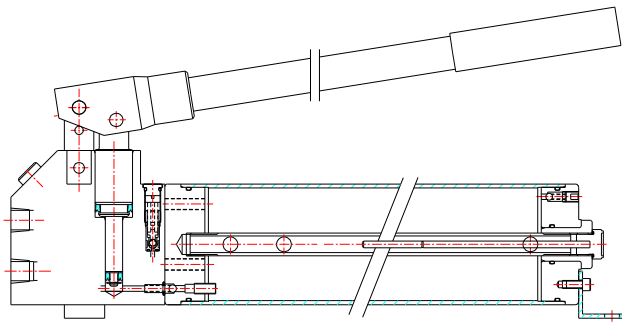
Heavy duty construction with hardened and ground piston.

Renewable Suction, Delivery, Relief, and Release valve parts. Integral Relief and Release valves.

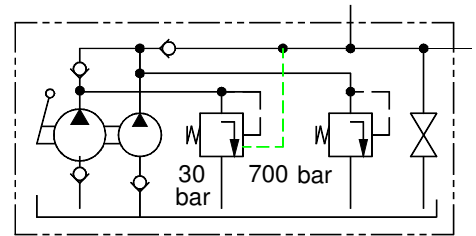
Construction in Alluminium alloy for light weight.



Section

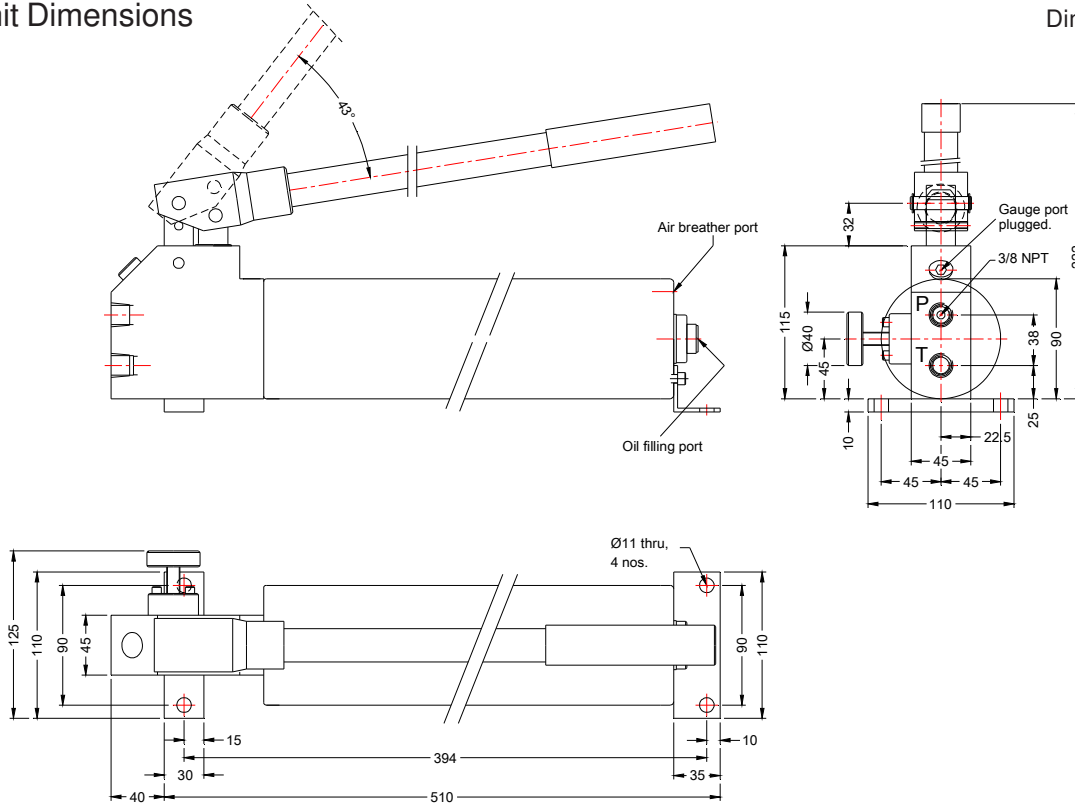


Hydraulic Symbol



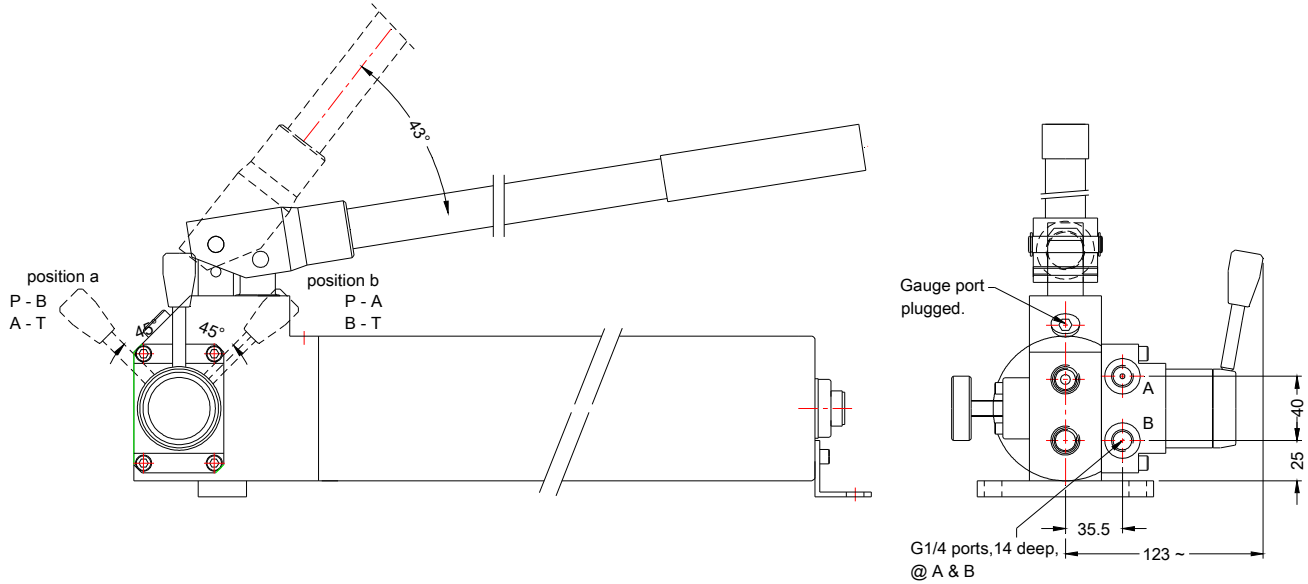
Unit Dimensions

Dimensions in mm.



FEED AND POWER HAND PUMP MODEL : HP2813

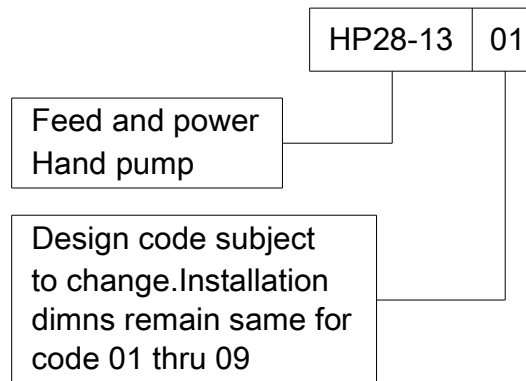
With Rotary Directional Control valve



Technical Specifications

Construction	Differential piston with single hand lever
Hydraulic Medium	Mineral oil (ISO VG 46)
Max.working pressure	HP2813 700 bar
Flow capacity	Low pressure 11.5 cc / stroke High pressure 2.5 cc / stroke
Oil tank capacity	2 Ltrs.
Oil tank displacement	1.6 Ltrs.
Force required at the end of the hand lever at Max.pressure	400 N approx.
Mass	5.6 kg (without oil)

Ordering Code



All rights reserved
Subject to revision

Note:-Rotary DCV to be ordered seperately

PRISM HYDRAULICS PVT. LTD.
B-23 Angol Ind. Estate
Udyambag,
Belgaum - 590 008, INDIA.

Phone :- +91-(0831)-4202340
Fax :- +91-(0831)-2443448
E-mail :- prismhydraulics@gmail.com