

MULTI STATION MANIFOLD FOR MOUNTING VALVES WITH CETOP-03 INTERFACE

Description

These bar manifolds are designed to connect the valves in parallel with interface conforming to ISO 4401-03-04.(CETOP-03)

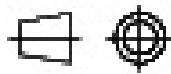
They have common P & T port sized for minimum pressure drop

These are available with maximum 10 stations.

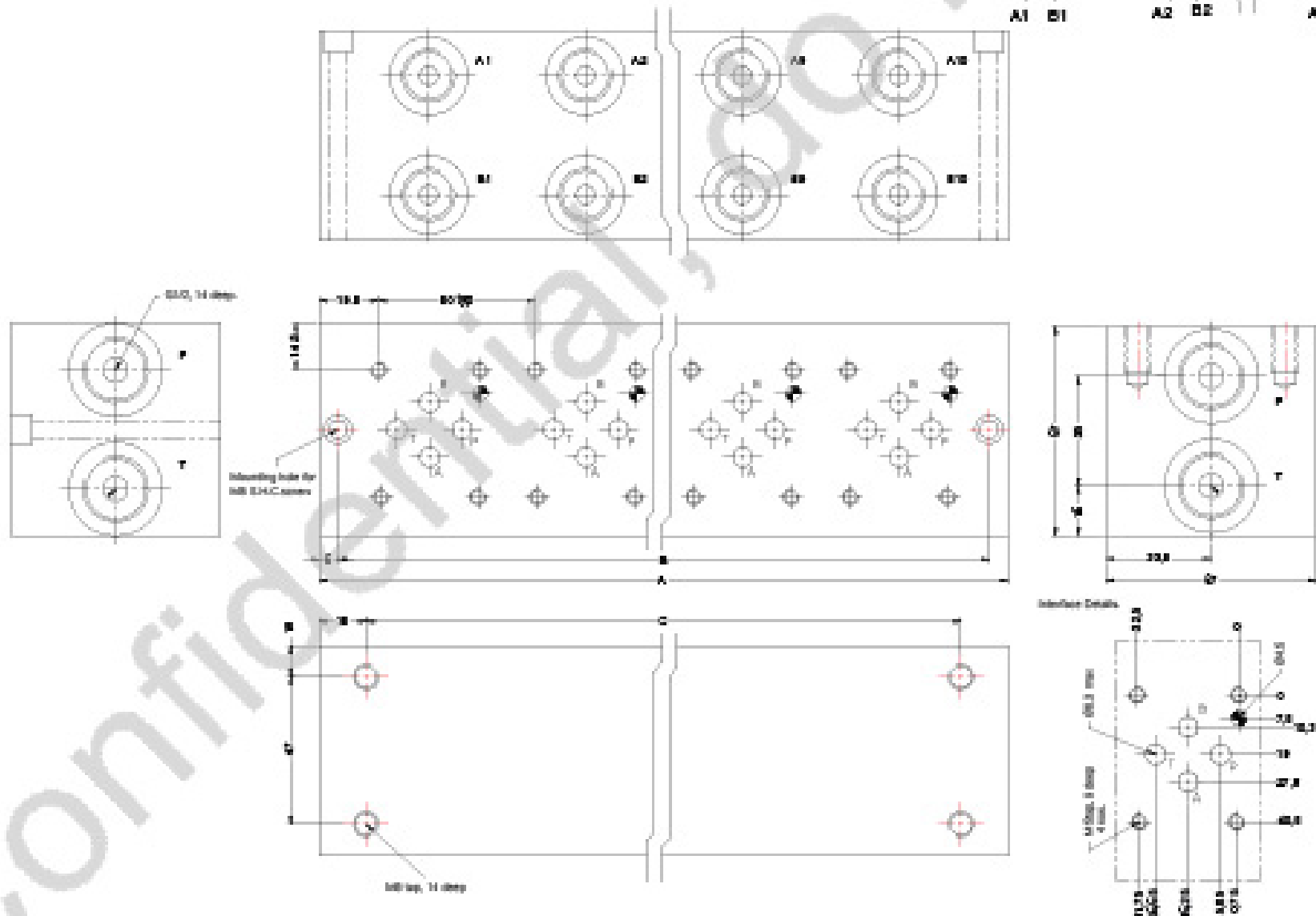
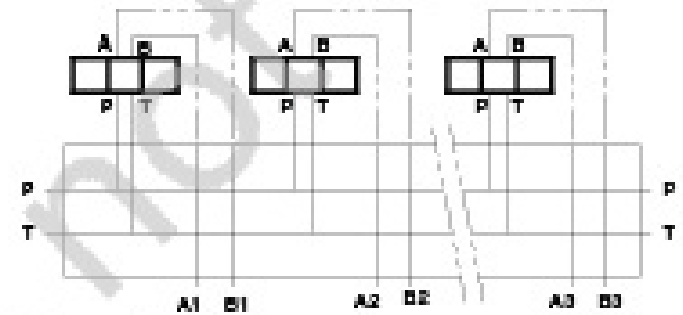


Unit dimensions

Dimensions in mm.



Hydraulic Symbol



No of stations	1	2	3	4	5	6	7	8	9	10
Model no	1P 0970/1	1P 0970/2	1P 0970/3	1P 0970/4	1P 0970/5	1P 0970/6	1P 0970/7	1P 0970/8	1P 0970/9	1P 0970/10
A	70	120	170	220	270	320	370	420	470	520
B	58	108	158	208	258	308	358	408	458	508
C	40	90	140	190	240	290	340	390	440	490

PRISM HYDRAULICS PVT. LTD.
B-23 Angol Indl. Estate,
Udyambag,
Belgaum - 590 008. INDIA.

Phone :- +91-(0831)-2443448
Fax :- +91-(0831)-4202340
E-mail :- prismhydraulics@gmail.com

MULTI STATION MANIFOLD FOR MOUNTING VALVES WITH CETOP -03 INTERFACE

Ordering Code

1P0970 / 9 01

Bar manifold for valves with CETOP03 (ISO4401-03-04) interface

Design code subject to change. Installation dimensions remain same for code 01 thru 09

Number of stations									
1	2	3	4	5	6	7	8	9	10

Confidential, do not copy

All rights reserved
subject to revision.

PRISM HYDRAULICS PVT. LTD.
B-23, Angol Indl. Estate,
Udyambag,
Belgaum - 590 008. INDIA.

Phone :- +91-(0831)-2443448
Fax :- +91-(0831)-4202340
E-mail :- prismhydraulics@gmail.com

P0476 [2]