

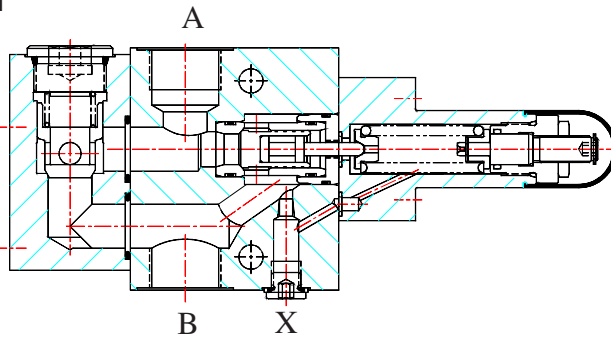
## COUNTER BALANCE VALVE MODEL : CBV Design series - 11

### Description

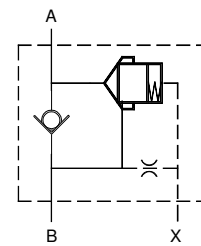
Counter balance valves are seat type valves. They offer free flow from their port B to port A and give leak free closure in opposite direction upto to a predetermined pressure. Predetermined cracking pressure can be adjusted within it's maximum specified range.



### Section

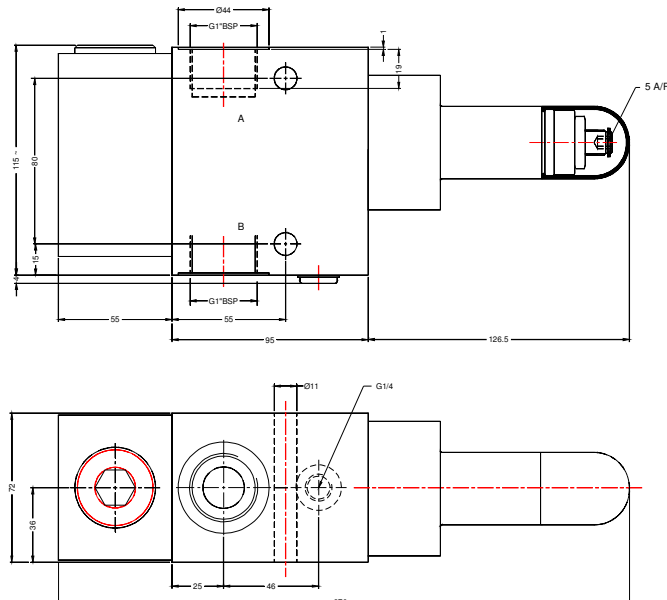


### Hydraulic Symbol

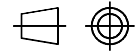


### Unit Dimensions

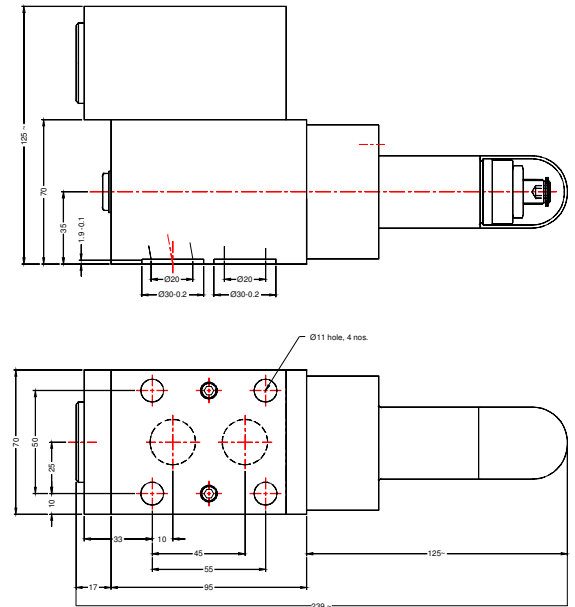
#### Threaded port body



#### Dimensions in mm.



#### Subplate type



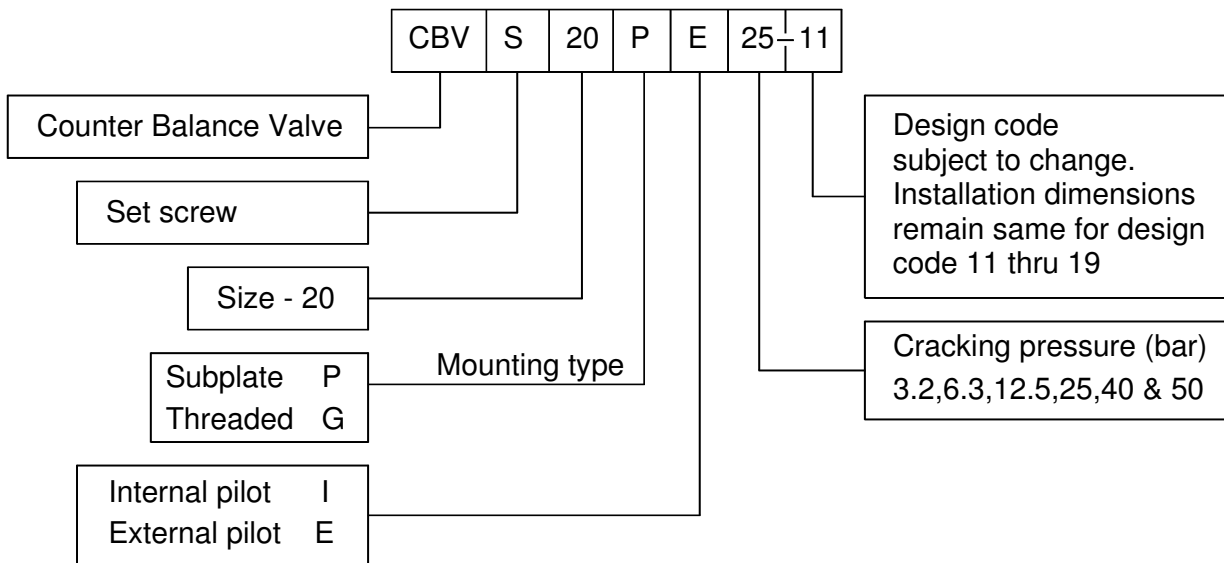
# PRISM HYDRAULICS PVT. LTD.

## COUNTER BALANCE VALVE      MODEL : CBV Design series-11

### Technical Specifications.

Construction .....	Direct acting, seat type.
Mounting type .....	Threaded port body & subplate mounting.
Mounting position .....	Optional.
Direction of flow .....	From port A to B Counter balance from port B to port A
Nominal flow handling capacity .....	200 l/min max
Operating pressure (bar) .....	315.
Cracking pressure .....	Refer ordering code
Hydraulic medium .....	Mineral oil.
Viscosity range .....	10 cSt to 380 cSt.
Fluid temperature range .....	-20 °c to +70 °c.
Fluid cleanliness requirement .....	As per ISO 16 / 13 or better.
Mass .....	12 kgs approx.

### Ordering Code



All rights reserved  
subject to revision.