

BELL HOUSING ASSEMBLY MODEL :- BH

1 Description

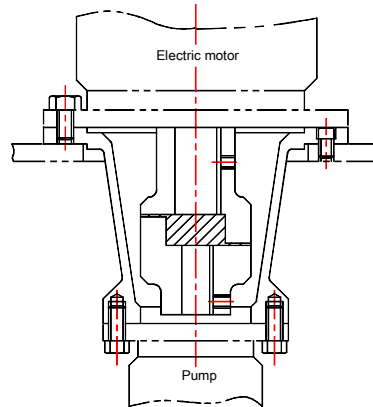
The bell housing series BH are designed for coupling hydraulic pumps having ISO flanges to electric motors having metric flanges.

These bell housing are precisely machined to reduce misalignment of coupled shafts. The correct alignment of the shafts along with the cushioned power transmission through resilient spider increases the life of the bearings of the pump / motor coupled.

The construction also reduces the noise generation considerably.

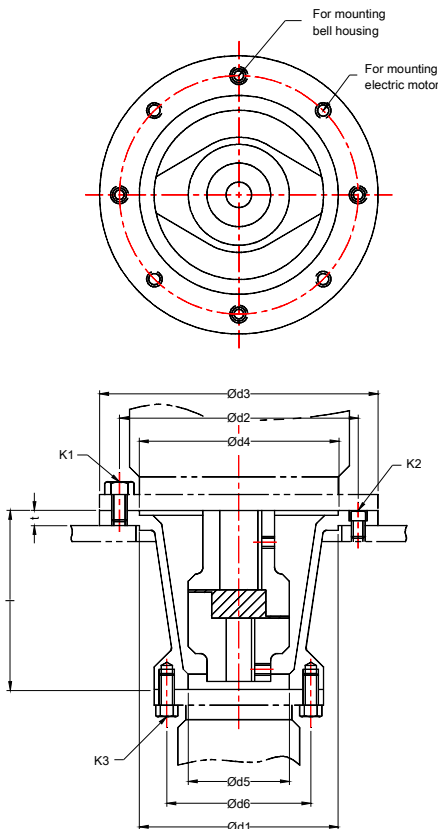
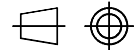


2 Section



3 Unit Dimensions

Dimensions in mm.



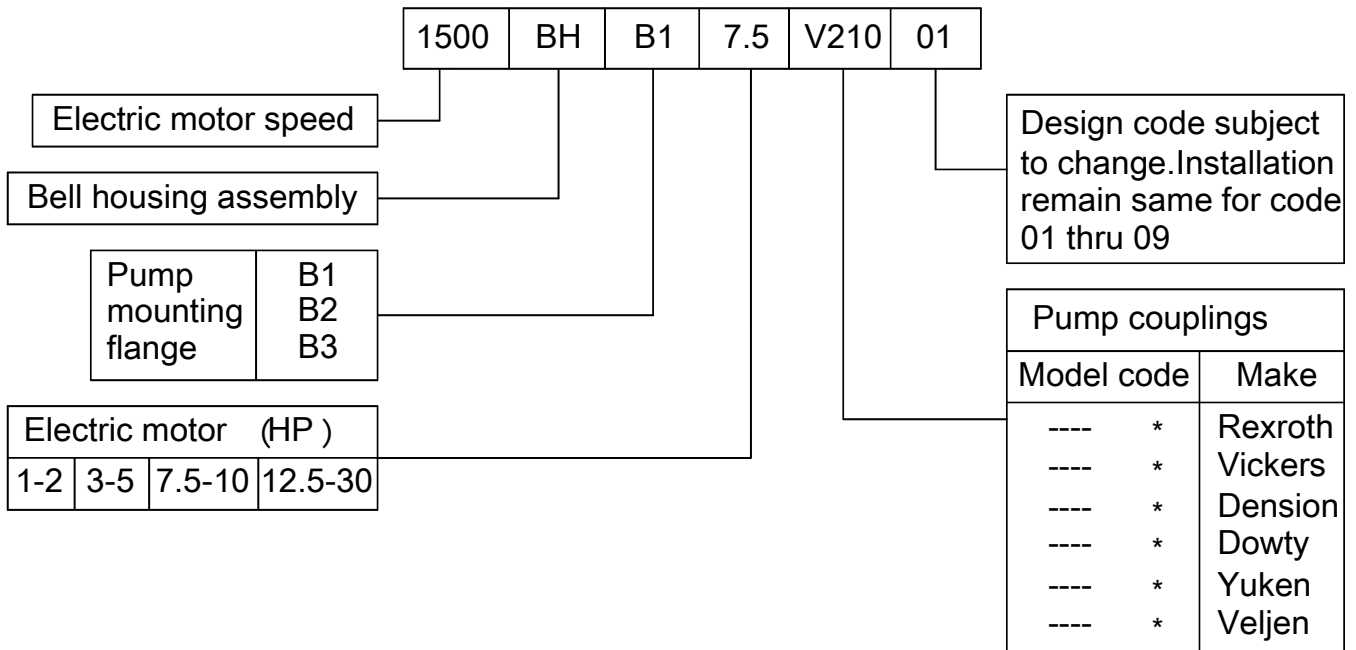
Pump m t y flange	Electric m otor HP	d1	d2	d3	d4	d5	d6	t1	l	K1xnos. HEX	K2xnos	K3xnos Hex
B1 flange	1-2	130	165	200	130	82.6	106.2	16	135	M 10x4	M 10x4	M 10x2
	3-5	180	215	250	180			16	145	M 12x4	M 10x4	M 10x2
	7.5-10	230	265	300	230			16	170	M 12x4	M 10x4	M 10x2
	12.5-30	250	300	350	250			20	210	M 16x4	M 12x4	M 10x2
B2 flange	1-2	130	165	200	130	101.6	146	16	145	M 10x4	M 10x4	M 10x2
	3-5	180	215	250	180			16	145	M 12x4	M 10x4	M 12x2
	7.5-10	230	265	300	230			16	175	M 12x4	M 10x4	M 12x2
	12.5-30	250	300	350	250			20	210	M 16x4	M 12x4	M 16x2
B3 flange	1-2	—	—	—	—	127	181	—	—	—	—	—
	3-5	180	215	250	180			16	175	M 12x4	M 10x4	M 12x2
	7.5-10	230	265	300	230			16	195	M 12x4	M 10x4	M 12x2
	12.5-30	250	300	350	250			20	225	M 16x4	M 12x4	M 16x2

BELL HOUSING ASSEMBLY MODEL : BH

4 Technical Specifications

Construction	Partially enclosed cast iron housing with flexible coupling
Mounting	Flange mounting, factory standard
Mounting position	Axis of the assembly can be mounted in any direction.
Pump mounting flange	As per ISO 3019/1-1975(E)
Motor mounting flange	As per IS 2223/IEC72-2
Flexible coupling	Spider Type
Working temperature	-40 degree celcius to +80 degree celcius.
Mass	B1 9.5 kg.
	B2 11.5 kg
	B3 14 kg.

5. Ordering code



Note :- Customer has to clearly specify the model code and the make of the pump.