

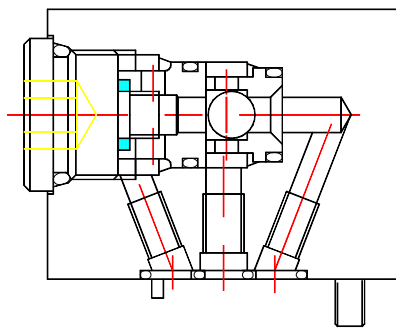
SHUTTLE VALVE MODEL : SLV

1. Description

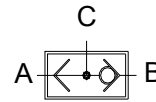
Seat type construction.
Automatically connects its C port to either A or B depending upon whichever of two ports is at higher pressure level.
Isolates port A and port B from each other.
Port C can be connected to tank port only if port A and port B are connected to tank.



2. Section



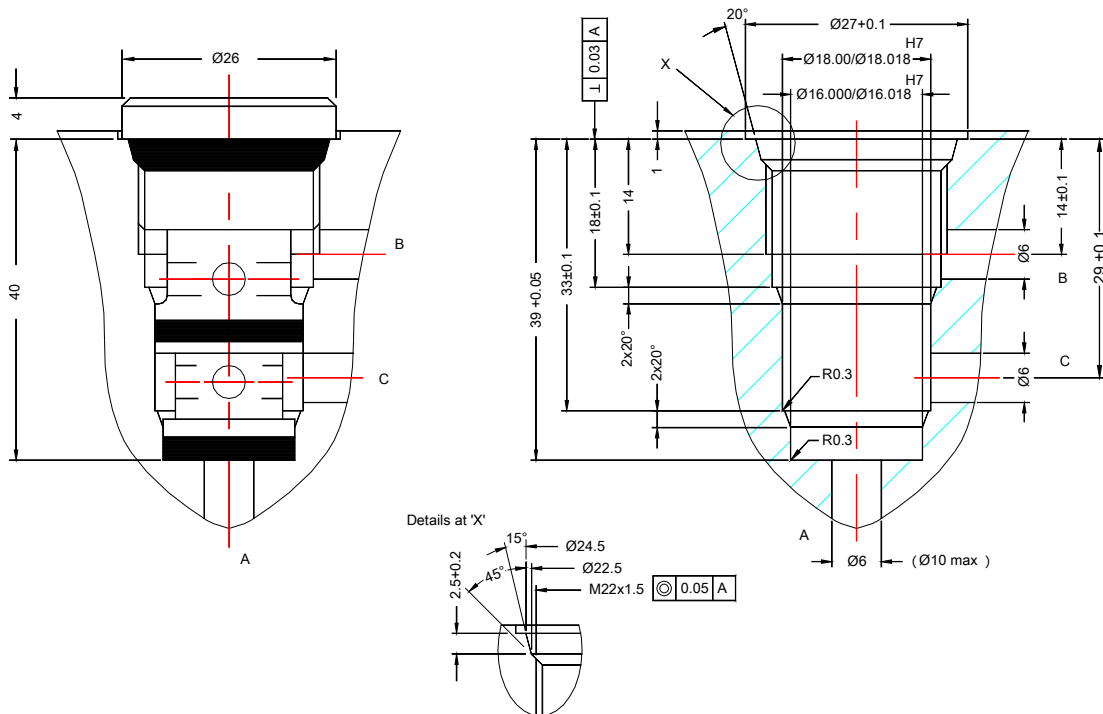
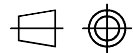
Hydraulic symbol



3. Unit dimension

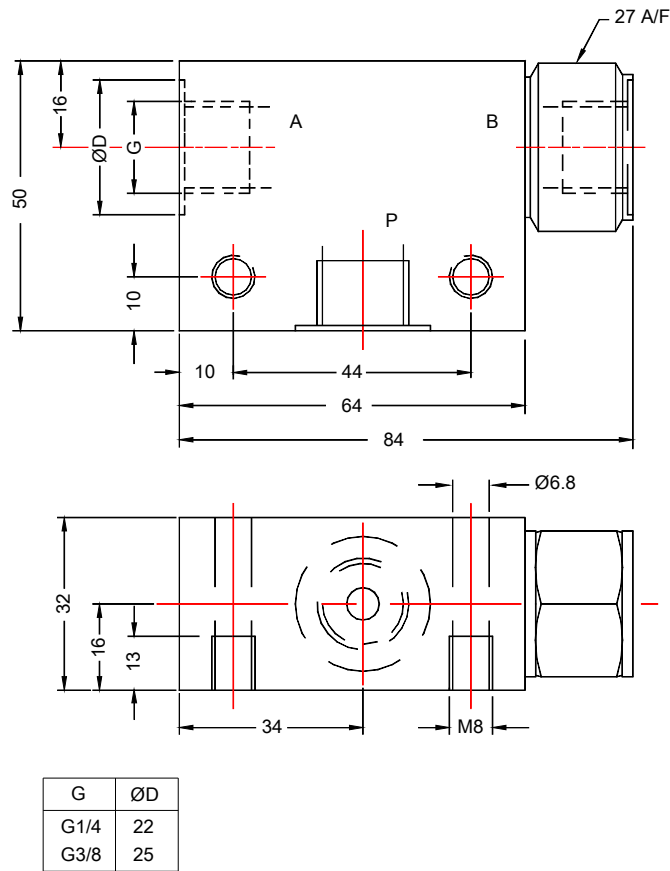
Dimensions in mm.

3.1 Slip in cartridge and cavity details

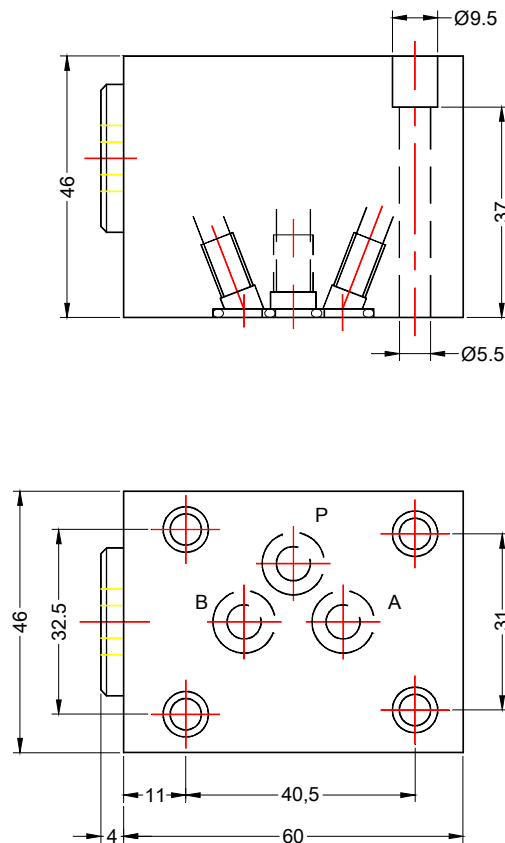


SHUTTLE VALVE : SLV

3.2 Threaded port body

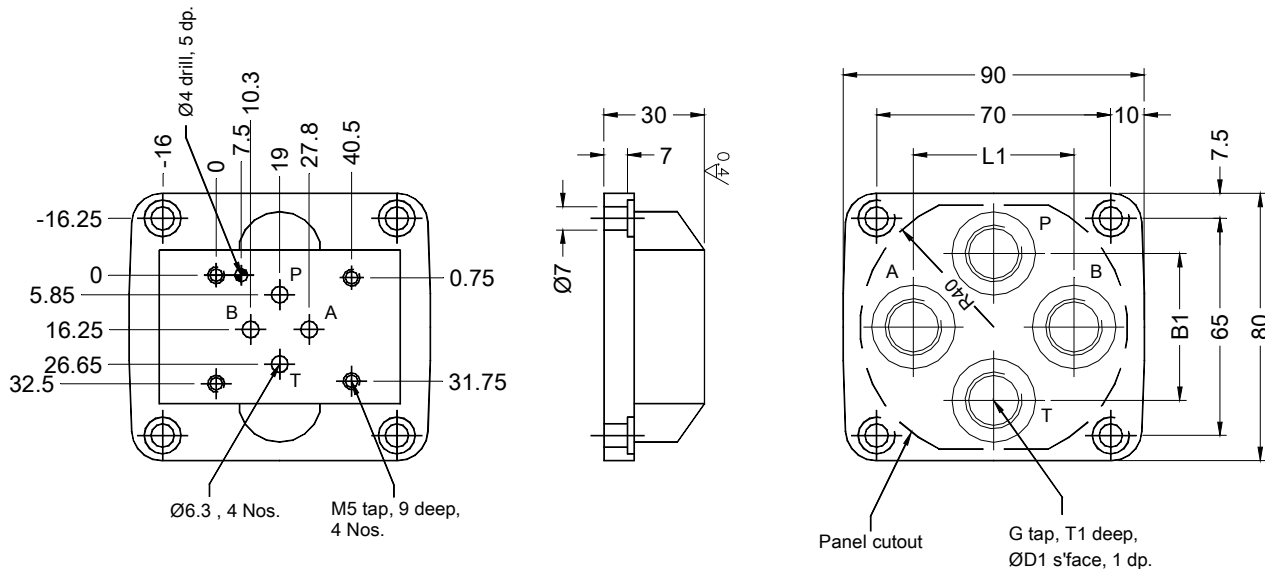


3.3 Subplate type



SHUTTLE VALVE MODEL : SLV

3.4 Subplate



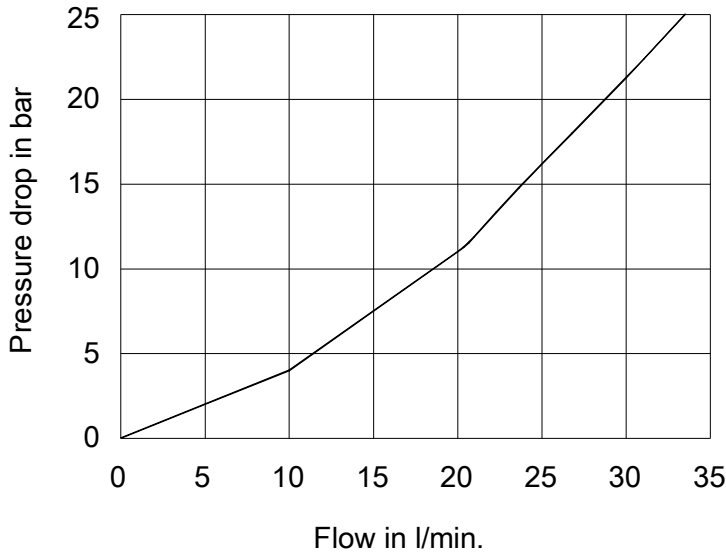
4. Technical specifications

| | |
|-------------------------------------|---|
| Construction ----- | Seat type |
| Mounting style ----- | Cartridge, Threaded connection (Factory standard) or Subplate type conforming to interface as per ISO4401-AB-03-4-A, DIN 24340, IS 10187 |
| Mounting position ----- | Optional. (valve axis horizontal preferred) |
| Direction of flow ----- | A to C if pressure at A > B. B to C if pressure at B > A. C to A and B if A and B are at equal pressure level. (This condition can be used to connect C to tank) |
| Operating pressure ----- | 315 bar |
| Hydraulic medium ----- | Mineral oil. |
| Viscosity range ----- | 10 cSt to 380 cSt. |
| Fluid temperature range ----- | -10 to +80 degree celcius |
| Fluid cleanliness requirement ----- | As per ISO 16/13 or better. |
| Mass ----- | Threaded type ----- 0.75 kg Subplate type ----- 0.83 kg. |
| Flow handling capacity ----- | Refer graph |

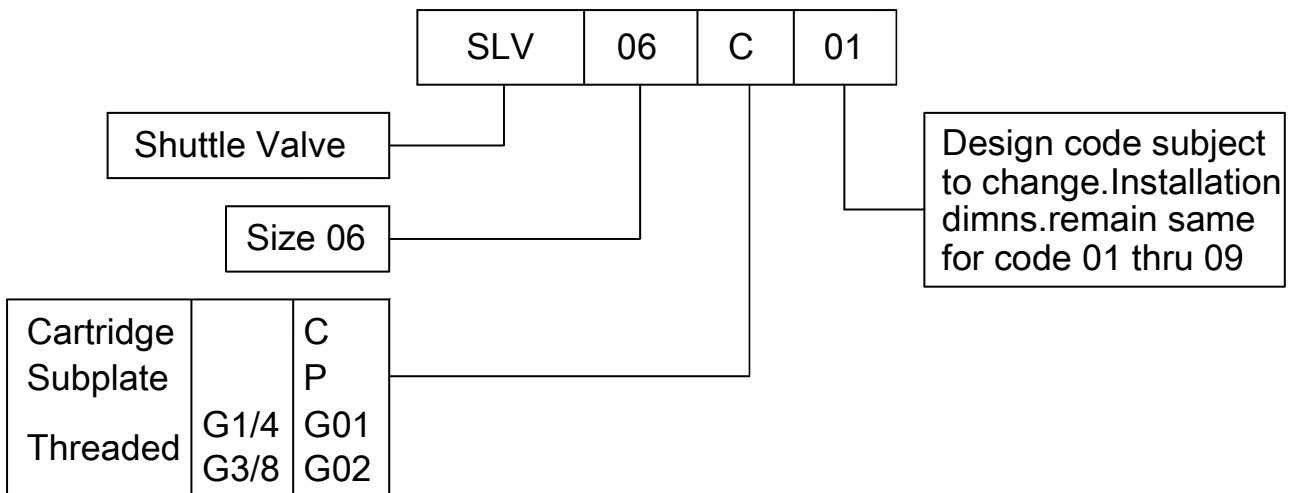
SHUTTLE VALVE : SLV

Performance curve

Oil used :- ISO VG46,viscosity:46cSt @ 40 degree celcius.Test temperature :-40degree celcius



4.Ordering code



All rights reserved
subject to revision.