

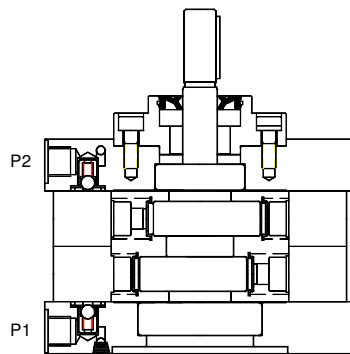
RADIAL PISTON DOUBLE PUMPS MODEL : 2RP

1 Description

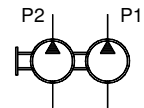
Radial piston arrangement with 3,5 or 7 pumping elements per section.
Oil immersed type, open execution.
Face mounting.
Valve controlled.
Fixed delivery.
Bi-directional rotation of shaft.
Extension shaft for through drive



2 Section



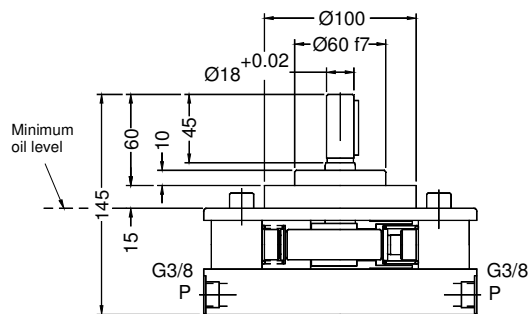
Hydraulic Symbol



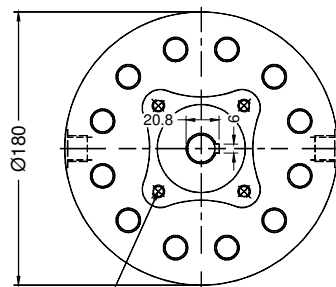
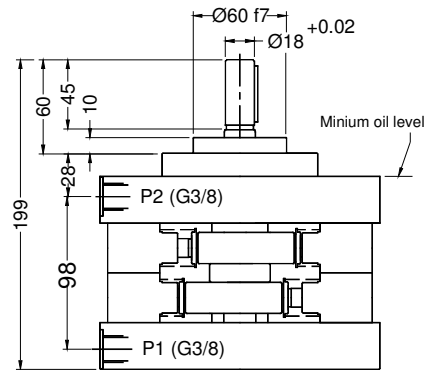
3 Unit Dimensions

Dimensions in mm.

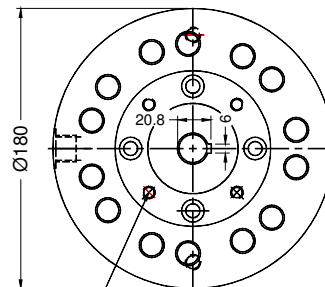
2 x 3 elements



2 x 5 / 7 elements



M8x1.25,12 deep,
on 80 p.c.d. 4 nos.



M8x1.25,12 deep,
on 80 p.c.d. 4 nos.

RADIAL PISTON DOUBLE PUMPS MODEL : 2RP

4 Tehnical Specifications

Designation2RP,basic radil piston double pump group
 Design Radial piston, valve controlled
 No.of Pistons 3, 5 or 7 at each port section depending upon flow requirement
 MountingFace mounting. (Factory standard)
 Direction of rotation 2RPCan be run in either directions
 2RPEDepends upon direction of rotation of low pr.pump
 Connection Suction ..Sucks oil directly from tank.
 Delivery ..Port P1 & P2 - G3/8 female.
 Speed range300 to 2000 rpm
 Hydraulic medium Mineral oil
 Viscosity range16 to 32 cSt
 Temperature range-10 to +80 degree celcius (Do not exceed viscosity limits at extreme temperatures for efficient running of pump)
 Fluid cleanliness requirementAs per ISO code 16/13
 PerformanceRefer Table no.1
 Mass19.8 kg.

Table No.1

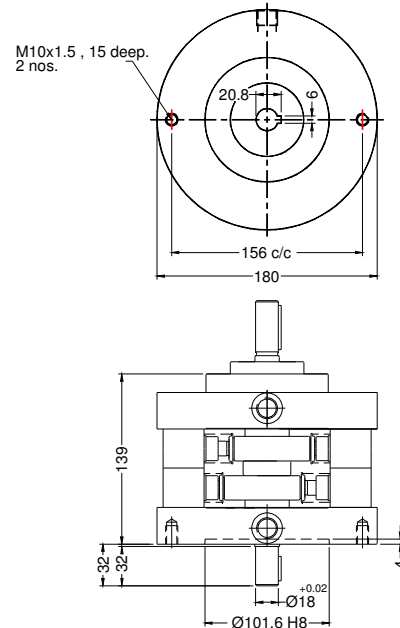
Code No.	Geometrical Displacement CC / REV	Rated Output @ 1450 rpm l / min.	Operating pressure bar	INPUT POWER REQUIREMENT(@1450 rpm)																											
				50 bar		100 bar		150 bar		200 bar		250 bar		300 bar		350 bar		400 bar		450 bar		500 bar		550 bar		600 bar		650 bar		700 bar	
				KW	HP	KW	HP	KW	HP	KW	HP	KW	HP	KW	HP	KW	HP	KW	HP	KW	HP	KW	HP	KW	HP	KW	HP	KW	HP	KW	HP
3Z	0.69	0.9	700	0.1	0.13	0.19	0.26	0.29	0.39	0.39	0.52	0.48	0.64	0.58	0.78	0.68	0.91	0.77	1.03	0.87	1.17	0.96	1.29	1.06	1.4	1.16	1.55	1.25	1.68	1.35	1.81
5Z	1.15	1.5		0.16	0.22	0.32	0.43	0.48	0.64	0.64	0.86	0.80	1.07	0.96	1.29	1.13	1.52	1.29	1.73	1.45	1.94	1.61	2.16	1.77	2.37	1.93	2.59	2.09	2.8	2.25	3.02
7Z	1.61	2.2		0.23	0.31	0.45	0.60	0.68	0.91	0.90	1.21	1.13	1.52	1.35	1.81	1.58	2.12	1.80	2.41	2.03	2.72	2.25	3.02	2.48	3.32	2.70	3.62	2.93	3.93	3.15	4.22
3A	1.21	1.5	550	0.17	0.23	0.3	0.5	0.5	0.7	0.7	0.9	0.9	1.2	1	1.4	1.2	1.6	1.4	1.8	1.6	2.1	1.7	2.3	1.9	2.5						
5A	2.01	2.6		0.29	0.38	0.6	0.8	0.9	1.2	1.2	1.5	1.4	1.9	1.7	2.3	2	2.7	2.3	3.1	2.6	3.5	2.9	3.8	3.2	4.2						
7A	2.81	3.7		0.4	0.54	0.8	1.1	1.2	1.6	1.6	2.2	2	2.7	2.4	3.2	2.8	3.8	3.2	4.3	3.6	4.8	4	5.4	4.4	5.9						
3B	1.88	2.5	450	0.27	0.36	0.5	0.7	0.8	1.1	1.1	1.4	1.3	1.8	1.6	2.2	1.9	2.5	2.1	2.9	2.4	3.2										
5B	3.14	4.2		0.45	0.6	0.9	1.2	1.3	1.8	1.8	2.4	2.2	3	2.7	3.6	3.1	4.2	3.6	4.8	4	5.4										
7B	4.4	5.8		0.63	0.84	1.3	1.7	1.9	2.5	2.5	3.4	3.1	4.2	3.8	5	4.4	5.9	5	6.7	5.6	7.5										
3C	2.71	3.7	350	0.39	0.52	0.8	1	1.2	1.6	1.5	2.1	1.9	2.6	2.3	3.1	2.7	3.6														
5C	4.52	6.2		0.64	0.86	1.3	1.7	1.9	2.6	2.6	3.5	3.2	4.3	3.9	5.2	4.5	6														
7C	6.33	8.6		0.9	1.21	1.8	2.4	2.7	3.6	3.6	4.8	4.5	6	5.4	7.2	6.3	8.5														
3D	3.19	4.3	300	0.45	0.61	0.9	1.2	1.4	1.8	1.8	2.4	2.3	3	2.7	3.6																
5D	5.31	7.2		0.76	1.01	1.5	2	2.3	3	3	4.1	3.8	5.1	4.5	6.1																
7D	7.43	10		1.06	1.42	2.1	2.8	3.2	4.3	4.2	5.7	5.3	7.1	6.3	8.5																
3E	3.69	5	250	0.53	0.7	1.1	1.1	1.6	2.1	2.1	2.8	2.6	3.5																		
5E	6.16	8.4		0.88	1.17	1.8	2.4	2.6	3.5	3.5	4.7	4.4	5.9																		
7E	8.62	11.7		1.23	1.64	2.5	3.3	3.7	4.9	4.9	6.6	6.1	8.2																		
3F	4.24	5.8	200	0.6	0.81	1.2	1.6	1.8	2.4	2.4	3.2																				
5F	7.07	9.7		1	1.35	2	2.7	3	4	4	5.4																				
7F	9.9	13.6		1.41	1.89	2.8	3.8	4.2	5.7	5.6	7.5																				

Torque limitation :- The sum of torque used for P1 port and P2 port end section should not exceed 70 Nm (11 kw at 1450 rpm) at any given intance.

RADIAL PISTON DOUBLE PUMPS MODEL : 2RP

5 Accessories

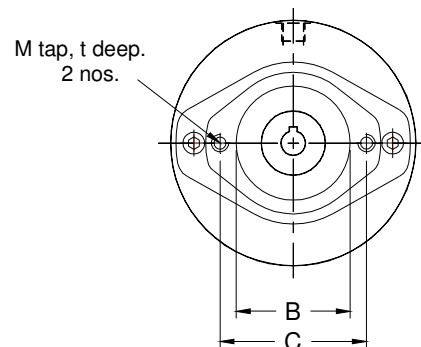
5.1 Extension shaft (for through drive)



Note :- Torque limitation :- The sum of the torque used for the piston pump and torque used at extended shaft end should not exceed 75 Nm (11 kw at 1450 rpm)

5.2 Extension bracket assemblies (For coupling low pressure pump)

- Consists of -- Extension bracket
- Set of flexible coupling
- Mounting bolt kit
- Dimensions -- Refer Table no.2

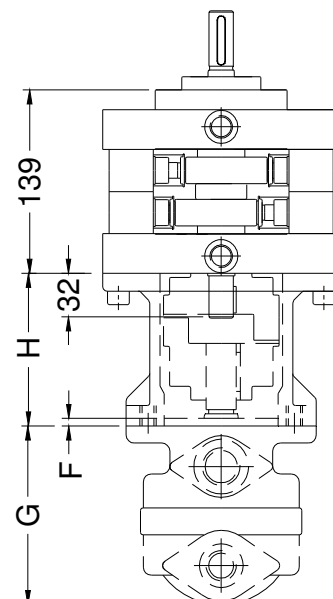


Code No.	B	C	F	H	M	t
B1	82.6	106.4	30	120	M10	15
B2	101.6	146	10	114	M12	18
B3	127	181	14	138	M16	20

Note : 1.For dimensions 'G' please refer pump manufacturer's catalogue.

2.Torque limitation :Refer note above.

3.Flexible coupling can be supplied with bored & key way machined coupling half to suit a specific brand & model of pump against specific request.

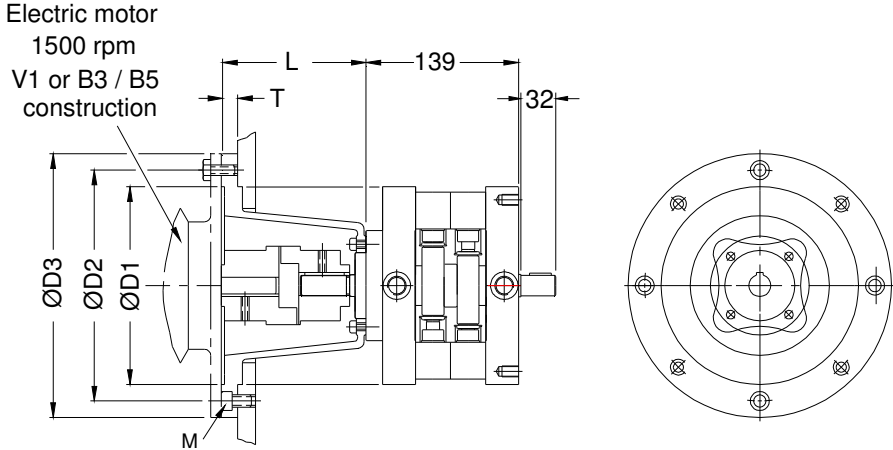


PRISM HYDRAULICS PVT. LTD.

RADIAL PISTON DOUBLE PUMPS MODEL : 2RP

5.3 Bell housing assemblies (For coupling pump to electric motor)

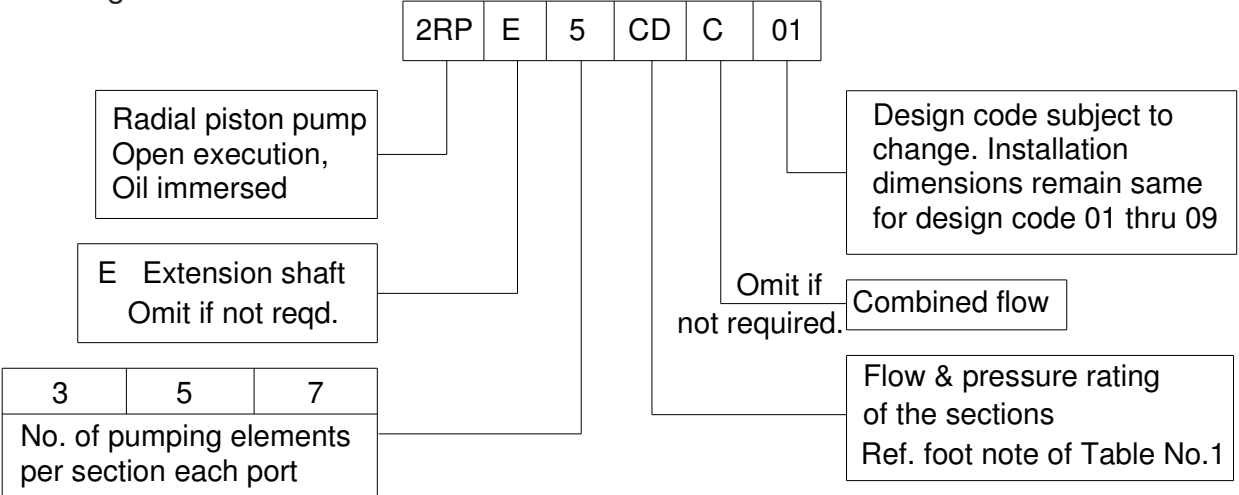
- Consists of : Bell Housing
- Flexible coupling set
- Bolt kits for pump, Motor & Bell housing
- Dimensions : Refer table no.3



Ordering code	ØD1	ØD2	ØD3	ØD4	T	L	M x Nos.	Suitable for electric motor of 1500 rpm. V1 construction.	
								Flow	Pressure
BHP/1								0.75	1
BHP/1.5	130	165	200	130	16	130	M10x4	1.1	1.5
BHP/2								1.5	2
BHP/3	180	215	250	180	16	145	M10x4	2.2	3
BHP/5								3.75	5
BHP/7.5	230	265	300	230	16	170	M10x4	5.6	7.5
BHP/10								7.5	10
BHP/12.5	250	300	350	250	20	200	M10x4	9.3	12.5
BHP/15								11	15

Note :- Bell housing assembly to be ordered separately.

6 Ordering code



Note:- A double pump of model 2RP5CD, for example, will have 5 pumping elements of "C" flow & pressure rating at it's P1 port end section & 5 pumping elements of "D" flow & pressure rating at it's P2 port end section