

PILOT OPTD. CHECK VALVE (MODULAR CONSTRUCTION) MODEL: MCIV

Description

Check valves MCIV are pilot operated check valves of sandwich plate design.

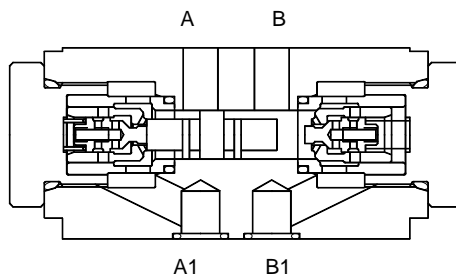
These valves are available with pilot operated check valve facility either on port A or B.

Mounting interface conforms to ISO 4401-AC-05-4-A.
IS 10187, DIN 24340.

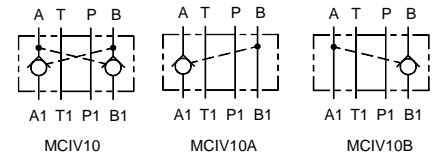
In order to ensure that the poppet valves seat correctly, the service ports of the directional control valve should be connected to the return line in the neutral position.



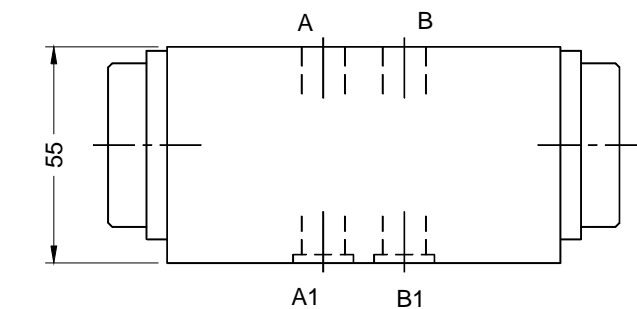
Section



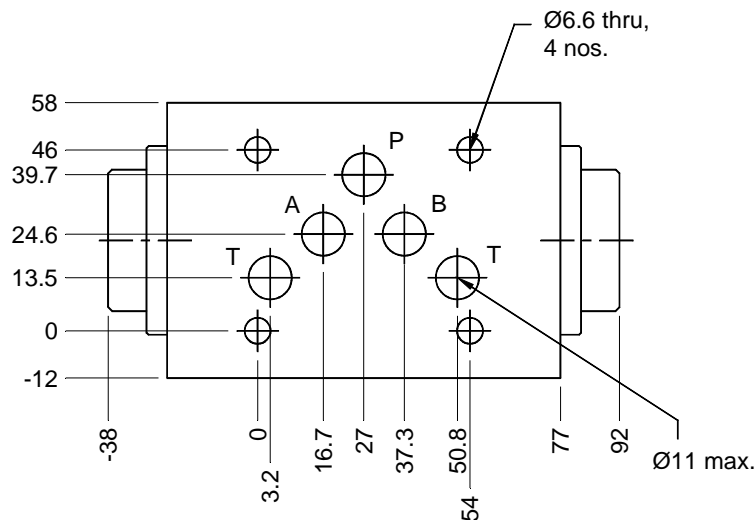
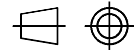
Hydraulic Symbol



Unit Dimensions



Dimensions in mm.

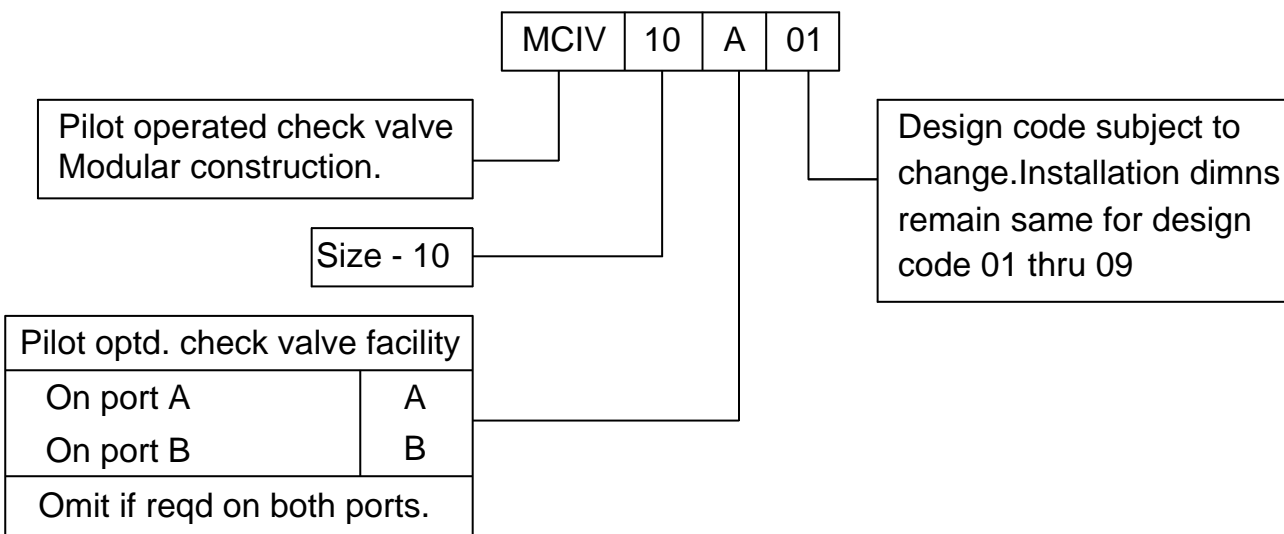


PILOT OPTD. CHECK VALVE (MODULAR CONSTRUCTION) MODEL : MCIV

Technical Specifications.

Construction	Modular, Seat type, Internally pilot operated.
Mounting	Modular type, conforming to IS 10187 ISO 4401-AC-05-4-A, DIN 24340.
Mounting position	Optional.
Direction of flow	Free flow from port A to A1 or from B to B1. Pilotd open flow in opposite direction.
Operating pressure	315 bar for all ports.
Cracking pressure	1 bar.
Area ratio . . . Pilot piston : Poppet seat . . .	4 : 1
Viscosity range	10 cSt to 380 cSt.
Fluid temperature range	-10 ⊖ to + 80 ⊕
Nominal flow handling capacity	80 l / min.
Mass	3.5 kg.

Ordering Code



All rights reserved
 subject to revision.