

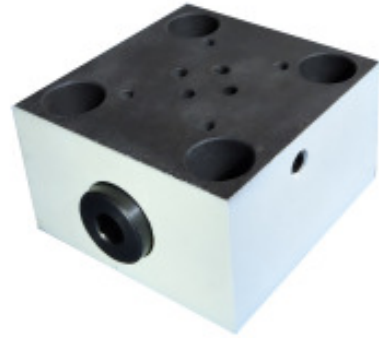
COVER WITH BUILT IN SHUTTLE VALVE FOR FITTING DCV MODEL :-LCC*SDEA*

Description

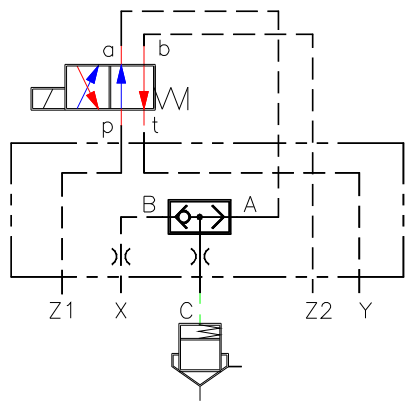
Designed to control the opening & closing of the cartridge valve

Cover has built in shuttle valve

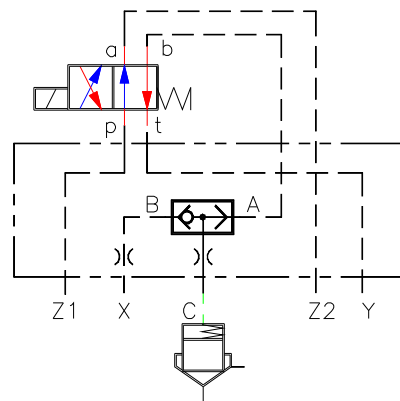
Different configurations are available as shown in the hydraulic symbol



Hydraulic Symbol



LCC*SDEAA***

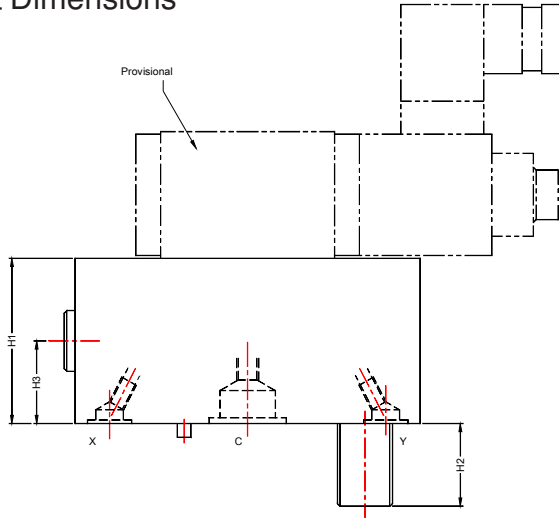
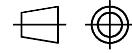


LCC*SDEAB***

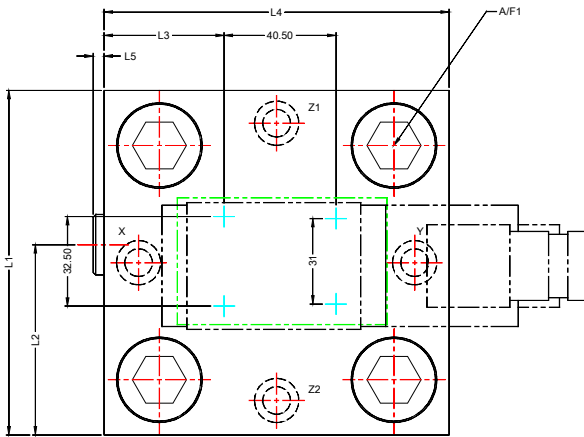
COVER WITH BUILT IN SHUTTLE VALVE FOR FITTING D.C.V. MODEL :LCC*SDEA*

Unit Dimensions

Dimensions in mm.

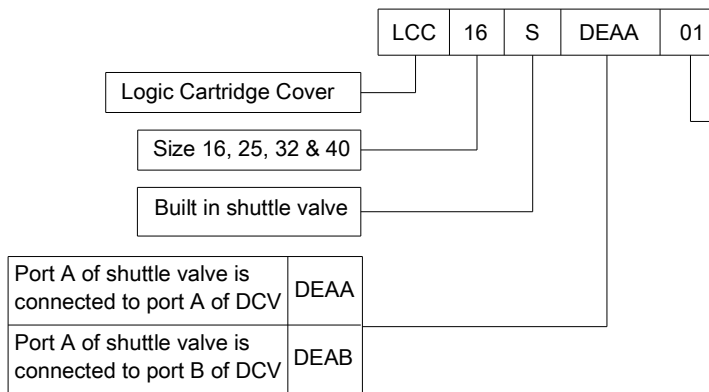


Size	16	25	32	40
L1	65	85	102	125
L2	32.5	42.5	51	62.5
L3	26.2	23.5	32	43.5
L4	75	85	102	125
L5	4	4	4	4
H 1	50	50	50	60
H 2	12	18	24	30
H 3	18	25	29	30
A /F 1	6	10	14	17



Size	Cover fixing S H C screw 12.9	Tightening torque da Nm
16	M 8x40 L	3.2
25	M 12x45 L	11
32	M 16x55 L	27
40	M 20x70L	52

Ordering Code



Design code subject to change. Installation dimensions remain same for design code 01 thru 09

All rights reserved
 subject to revision.