

SOLENOID PILOT OPERATED DIRECTIONAL CONTROL VALVE MODEL : 4DEP20

Description

Completely encapsulated mechanism for protection against dirt.

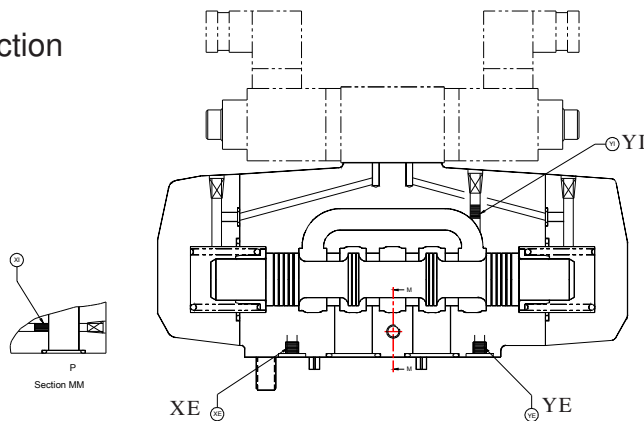
Available as spring centred, spring offset or detented model.

Internal or external drain available as an optional feature.

Valve mounting interface conforms to International and National standards.



Section



Hydraulic Symbol

2 position spring offset 

3 position spring centred 

For pilot pressure

For pilot drain

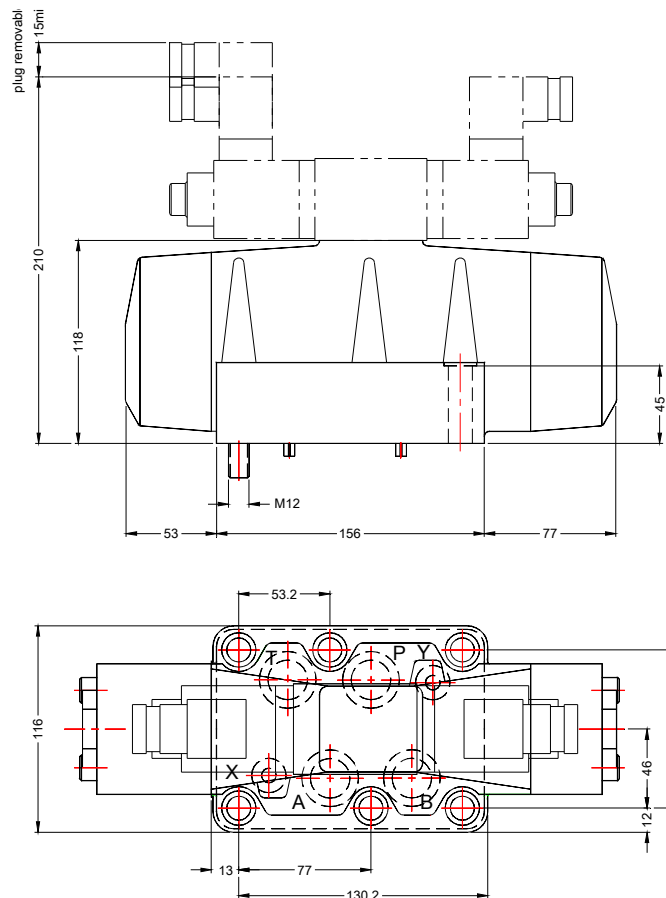
External : Open XE
Close XI

External : Open YE
Close YI

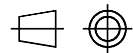
Internal : Open XI
Close XE

Internal : Open YI
Close YE

Unit Dimensions

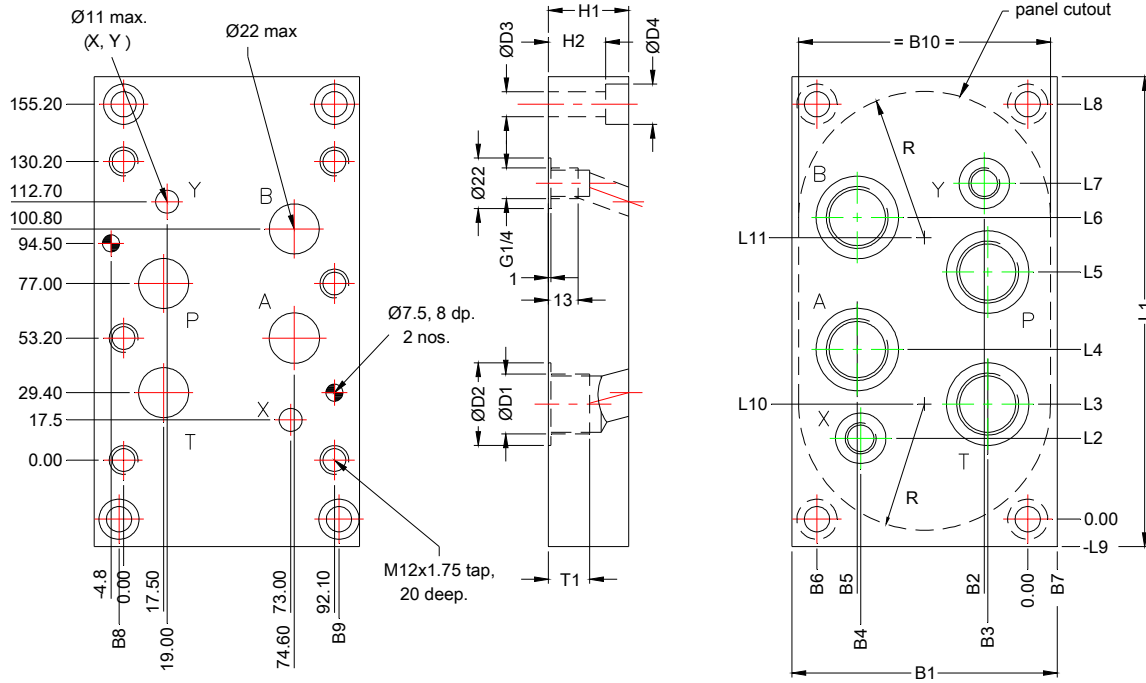


Dimensions in mm.



SOLENOID PILOT OPERATED DIRECTIONAL CONTROL VALVE MODEL : 4DEP20

Subplate



Subplate type	D 1	D 2	T 1	D 3	D 4	H 1	H 2	B 1	B 2	B 3	B 4	B 5	B 6	B 7	B 8	B 9
CET07G 04	G 3/4	36	18	11	17.5	35	25	116	17.5	19	73	74.5	92.1	-12	0	92.1
CET07G 05	G 1	44	18	11	17.5	35	25	116	17.5	19	73	74.5	92.1	-12	0	92.1
CET07G 06	G 1-1/4	54	21	14		78	43	170	32	36	106	110	142	-14	-25	117

Subplate type	B 10	L 1	L 2	L 3	L 4	L 5	L 6	L 7	L 8	L 9	L 10	L 11	L 12	R	Mass (kg)
CET07G 04	110	205	35.3	50.2	74	107.8	131.6	146.5	181	-12	50.2	131.6	-25.8	55	6
CET07G 05	110	205	35.3	50.2	74	107.8	131.6	146.5	181	-12	50.2	131.6	-25.8	55	6
CET07G 06	160	250	16.8	60.2	84	137.8	161.6	205	222	-14	50.2	119	-46	113	19

Note :- Valve fixing screws M12x1.75(12.9) x 65 L, 6 nos.Tightening torque 105 Nm

SOLENOID PILOT OPERATED DIRECTIONAL CONTROL VALVE MODEL : 4DEP20

Technical Specifications

Construction	Spool type
Mounting	Subplate mounting as per ISO 4401-AE-08-4-A and IS-10187-20 mm diameter nominal port.
Mounting position	Optional
Flow direction	As per spool type.
Operating pressure	For port P, A, B and X 350 bar For port T (external drain)250 bar. (Internal drain) 160 bar. For port Y 160 bar
Minimum pilot pressure	5 bar
Hydraulic medium	Mineral oil
Viscosity range	10 cSt to 380 cSt
Fluid temperature range	-20 to +70
Fluid cleanliness requirement	As per ISO 16/13 or better.
Maximum flow handling capacity	Refer performance curves.
Mass	17.5 kg approx. 2.3 kg.(Solenoid valve)

Performance Curves

Oil used :- ISO VG46, Viscosity : 46 cSt @ 40 °C, Temp @ test 50°C

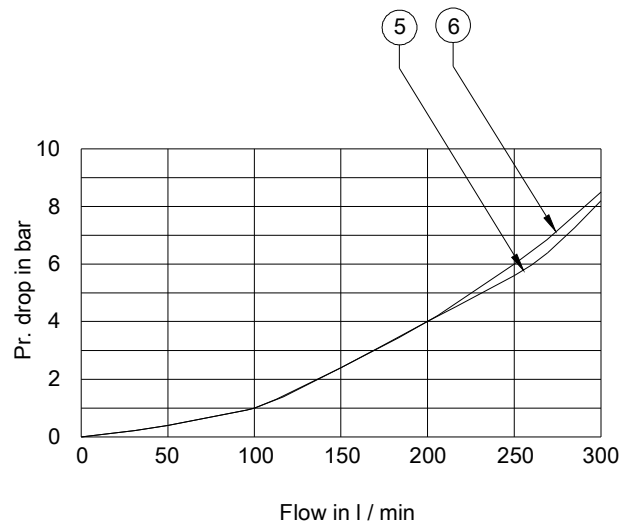
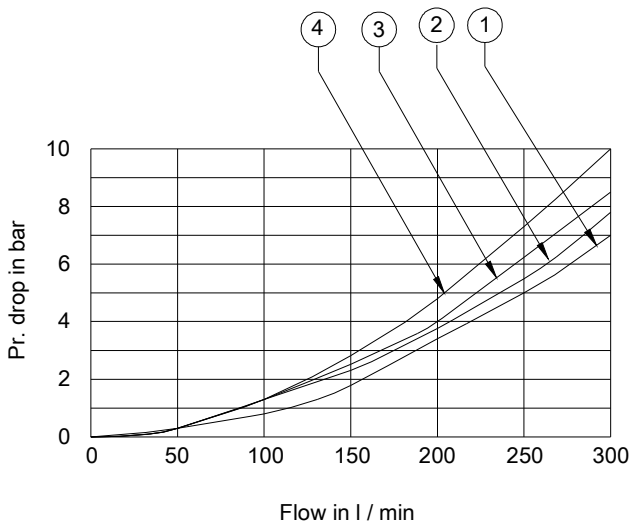


Table showing the relation between the spool type, direction of flow and the curve in the above graph to be referred to.

Direction of flow	P to T	P to A	P to B	A to T	B to T
Spooltype	C curve no .				
E	-	2	2	2	2
F	-	1	1	1	2
G	3	6	6	5	4
H	-	-	-	1	1
J	-	2	2	1	1
L	-	2	2	1	2
P	-	1	1	2	1

SOLENOID PILOT OPERATED DIRECTIONAL CONTROL VALVE MODEL : 4DEP20

Ordering code

	4	DEP	20	P	E	X	S	C4	A220	01
--	---	-----	----	---	---	---	---	----	------	----

4 Service port

Directional Control Valve
Electrically controlled
pilot operated

Size-20

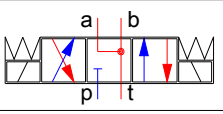
Subplate mtg. P

Spool Type.
Ref Spool chart.

Design code sub. to change.
Installation dimns remain same
for design code 01 thru 09

Solenoid coil voltage

A 220 ----- 220VAC
D24 ----- 24 VDC

C4 Spool type 

S Spring Centered. (3 position)
Spring Offset (2 position)

External pilot supply External drain	XY
Internal pilot supply External drain	Y
Internal pilot supply Internal drain	No design
External pilot supply Internal drain	X

Type	Symbol	Cross over	Type	Symbol	Cross over
E			T		
F			A		
G			C		
H			D		
J					
M					
P					

Note :- Subplate to be ordered separately

All rights reserved
subject to revision.