

PILOT OPTD PRESSURE RELIEF CUM UNLOADING VALVE MODEL : PRUV

Description

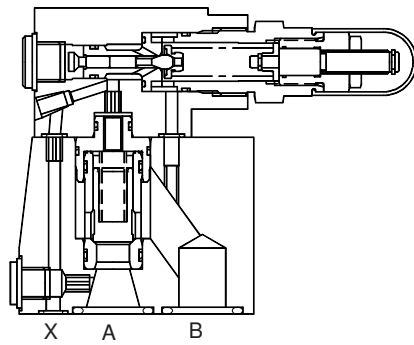
Two stage poppet type Relief cum Unloading Valve.

Solenoid Unloading facility as an optional feature.

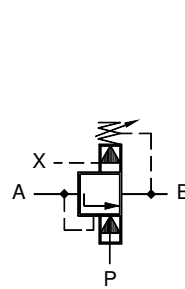
Three standard sizes (10,20 & 30) in subplate mounting construction.



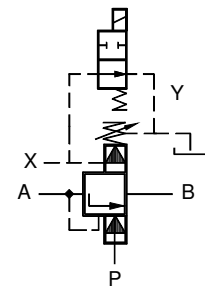
Section



Hydraulic Symbol



Valve with internal pilot drain.



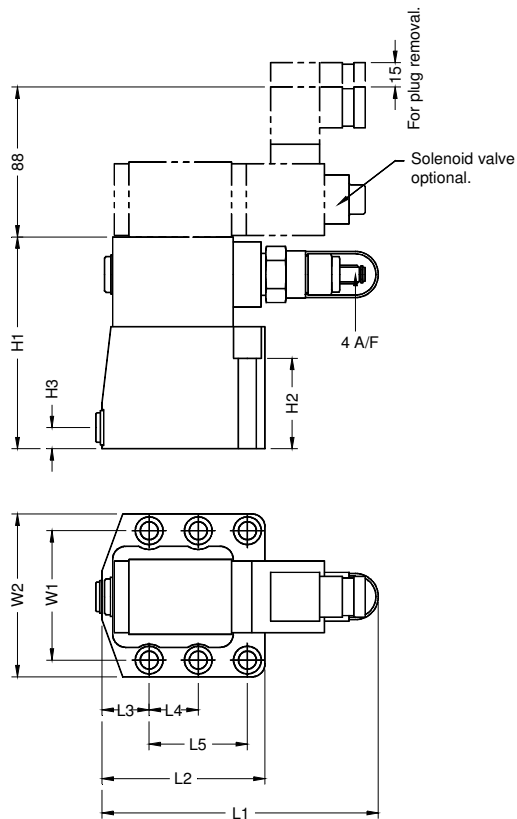
Valve with external pilot drain and solenoid control

Unit Dimensions

Table No.1

Size	10	20	30
H1	129	130	148
H2	95	75	75
H3	13	12	14
L1	173	178	183
L2	84	100	128
L3	31	28.9	31.8
L4	-	-	42.1
L5	42.9	60.3	84.1
W1	66.7	79.4	96.8
W2	88	100	120
Mass(kg)	4.8	6.7	12

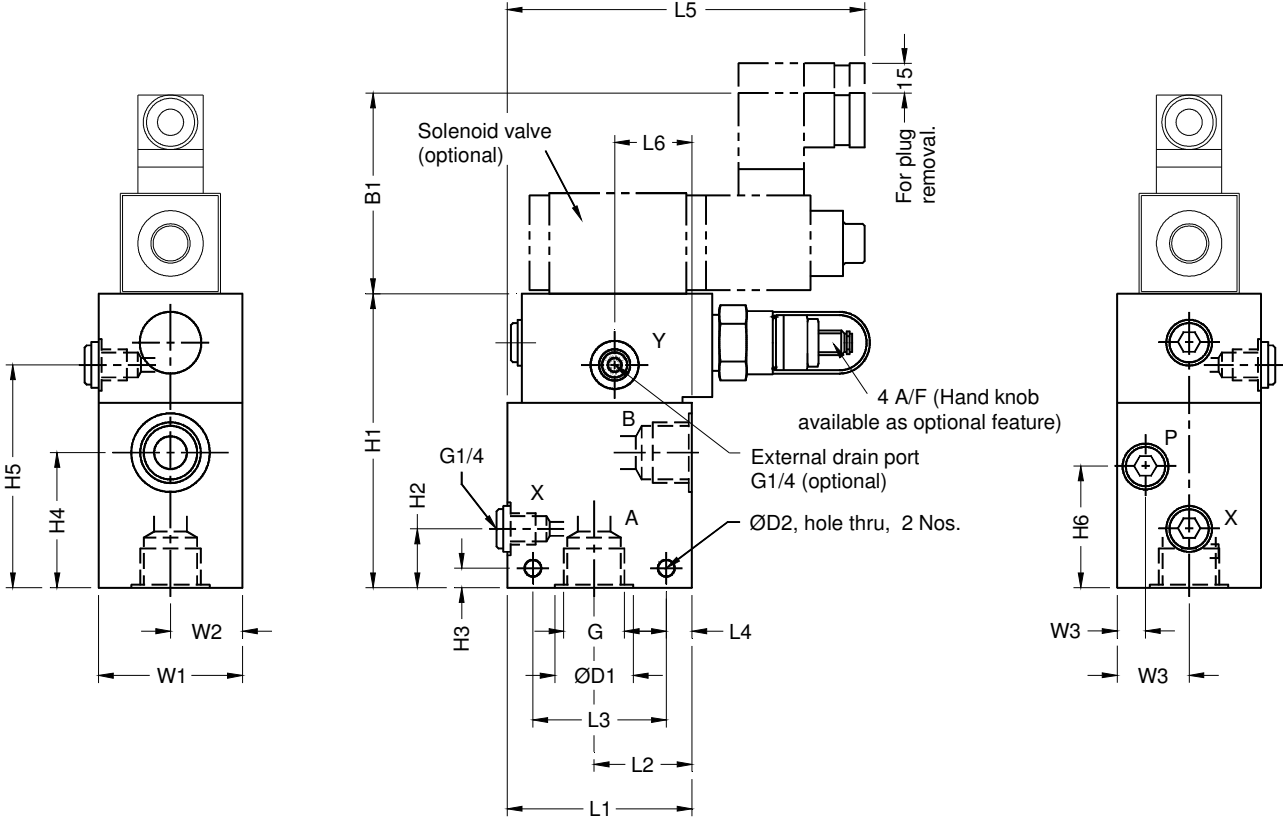
Dimensions in mm.



PRISM HYDRAULICS PVT. LTD.

PILOT OPTD PRESSURE RELIEF CUM UNLOADING VALVE MODEL : PRUV

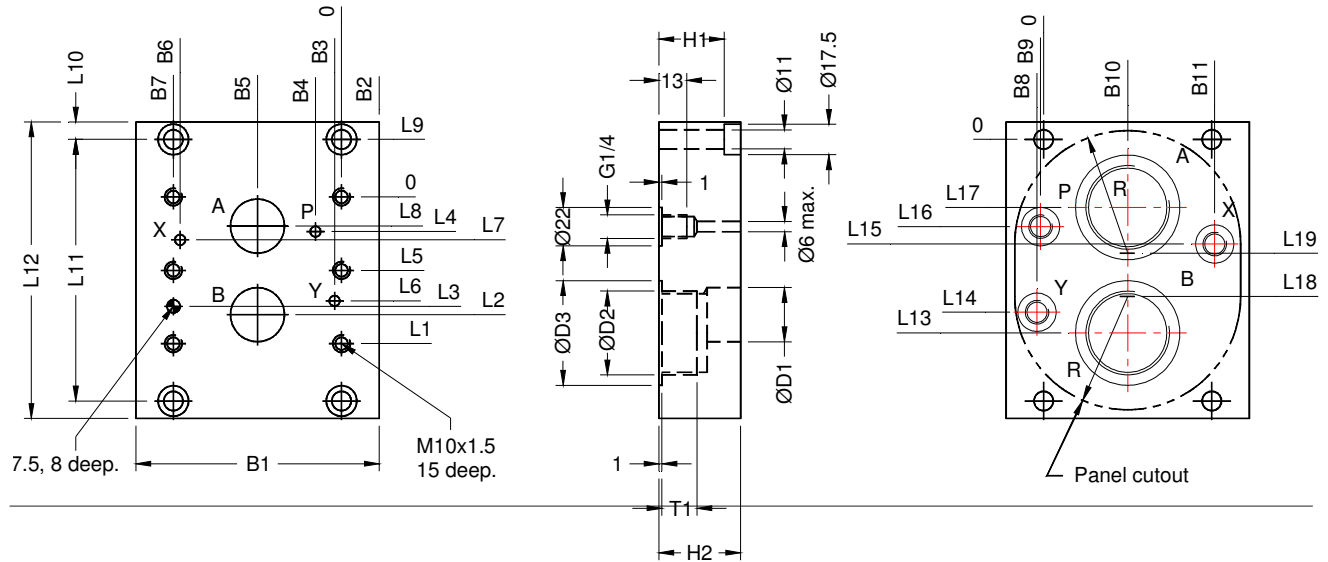
Threaded Body



Size	Mass Kg	G	H1	H2	H3	H4	H5	H6	L1	L2	L3	L4	L5	L6	W 1	W 2	W 3	D 1	D 2
10													157						
20	4.8	G1	138	27	10	57	100	50	85	45	62	14	157	35.5	66	33	12	44	9
30	9.5	G1-1/2	175	42	13	80	138	80	100	54	72	18	157	41.5	86	43	14	60	11

PILOT OPTD PRESSURE RELIEF CUM UNLOADING VALVE MODEL : PRUV

Subplate



Size	Model	Mass kg	B1	B2	B3	B4	B5	B6	B7	B8	B9	B10	B11	ØD1	ØD2	ØD3
10	PRUV10G03	2.4	86	9.6	7.9	11	33.3	58.7	66.7	-33.3	-7.9	33.3	58.7	13	G1/2	30
20	PRUV10G04	5.2	112	16.3	6.4	14	39.7	73	79.4	3	3	39.7	75	22	G3/4	36
	PRUV20G05														G1	44
30	PRUV30G06	8.5	140	21.6	4	15	48.4	92.9	96.8	1.6	1.6	48.4	98.5	31	G1-1/4	54
	PRUV30G07														G1-1/2	60

Size	Model	H1	H2	L1	L2	L3	L4	L5	L6	L7	L8	L9	L10	L11	L12	L13
10	PRUV10G03	15	29	42.9	35.7	31.8	7.1	-	21.4	21.4	7.1	45.9	10	121	141	85
20	PRUV10G04	25	45	60.3	49.2	44.5	11.1	-	39.7	20.8	11.1	22	16	104	136	77
	PRUV20G05															
30	PRUV30G06	35	47	84.1	67.5	62.7	16.7	42.1	59.6	24.6	16.7	33	10	150	170	111
	PRUV30G07															

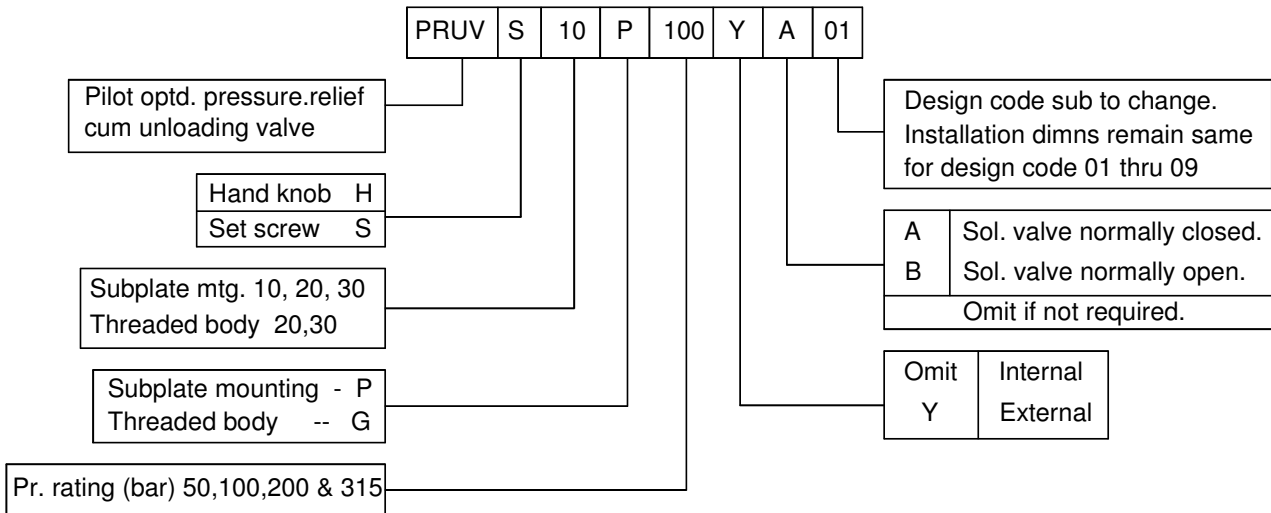
Size	Model	L14	L15	L16	L17	L18	L19	R	T1	Valve fixing screws	Tightening torque
10	PRUV10G03	11	67.3	67.3	49	82	53	40	12	M10x110L	70 Nm
20	PRUV20G04	39	42.6	64	27	57	47	52	16	M10x90L	
	PRUV20G05										
30	PRUV30G06	50	60	99.1	39	90	60	65	20	M10x90L	
	PRUV30G07										

PILOT OPTD PRESSURE RELIEF CUM UNLOADING VALVE MODEL : PRUV

Technical Specifications

Construction .....	Two stage poppet valve
Mounting .....	Subplate conforms to ISO 5781 with additional pressure port P
Mounting position .....	Optional
Flow direction .....	From port A to B
Operating pressure .....	For port A, X, & P ..... 315 bar. For port B ..... 60 bar.
Hydraulic medium .....	Mineral oil
Viscosity range .....	10 cSt to 380 cSt.
Temperature range .....	-20 c to + 70 c.
Fluid cleanliness requirement .....	As per ISO 16 / 13
Maximum flow handling capacity .....	10 ..... 100 l / min. 20 ..... 200 l / min. 30 ..... 400 l / min.
Mass .....	Refer individual table

Ordering code



All rights reserved  
subject to revision.