

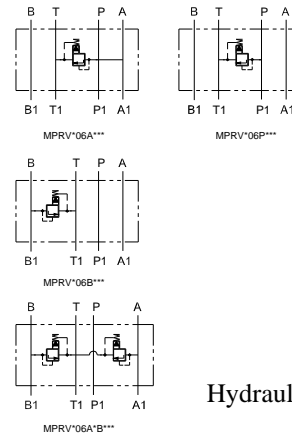
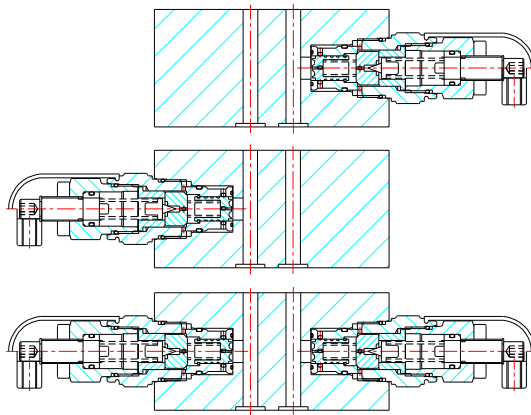
## PILOT OPERATED PRESSURE RELIEF VALVE MODULAR TYPE MPPRV06

### Description

Pilot operated pressure relief valves of modular construction are for vertical stacking assemblies Interface conforming to  
 ISO 4401 - AB - 03 - 04 - A  
 IS 10187  
 DIN 24340  
 Four models available.



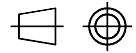
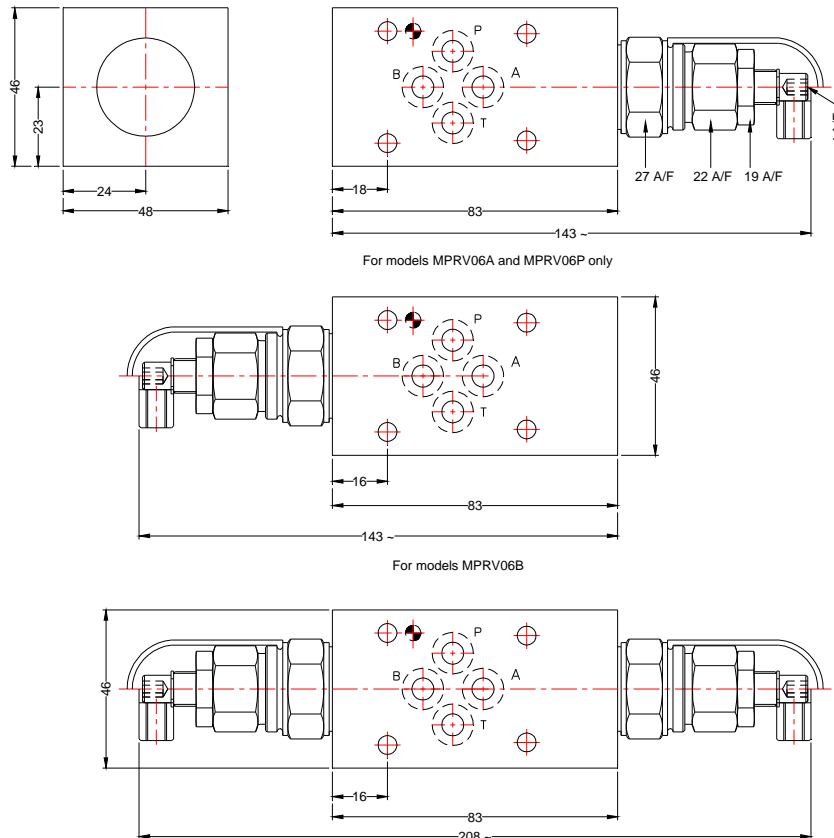
### Section



Hydraulic symbol

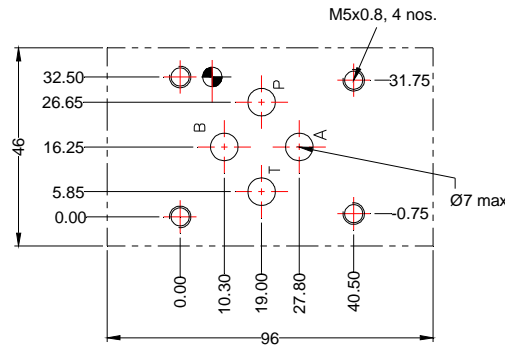
### Unit Dimensions

Dimensions in mm.



PILOT OPERATED PRESSURE RELIEF VALVE MODULAR TYPE MPRV06

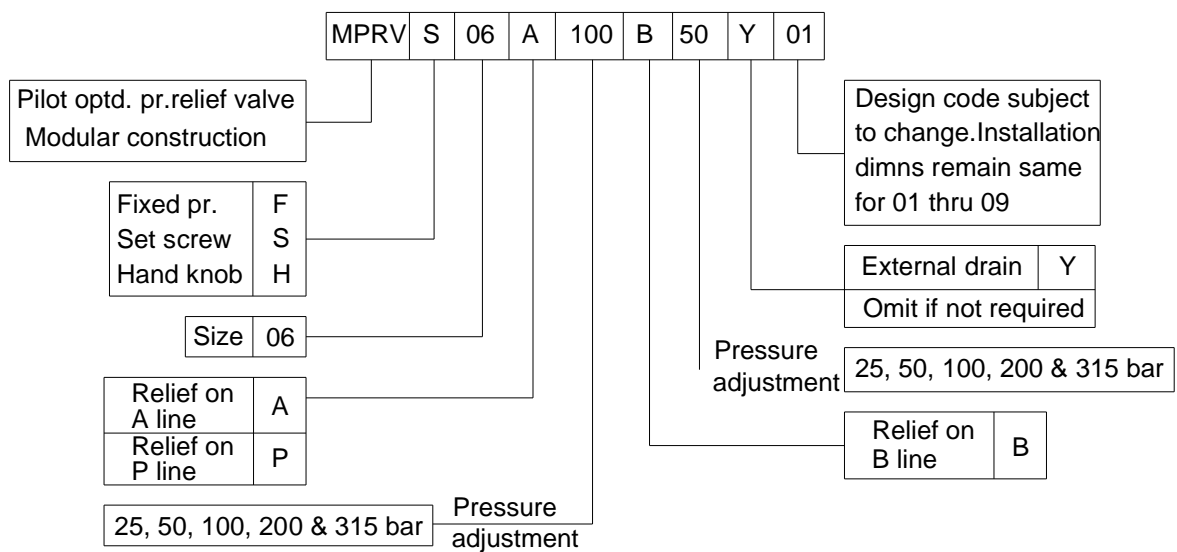
Interface details



Technical specifications

Construction .....	Modular (Stackable Type)
Mounting .....	Modular Type, conforming to ISO4401 - AB - 03 - 04 - A IS 10187, DIN 24340
Mounting position .....	Optional.
Flow direction .....	As indicated by the hydraulic symbol.
Operating pressure .....	315 bar for all ports.
Cracking Pressure .....	Refer PPR06 datasheet.
Viscosity range .....	10 cSt to 380 cSt.
Fluid temperature range .....	-10 °C to +80 °C.
Fluid cleanliness requirement .....	As per ISO 16/13.
Nominal flow handling capacity .....	30 lpm.
Mass .....	0.8 kg.

Ordering code



All rights reserved  
subject to revision.

PRISM HYDRAULICS PVT. LTD.  
B-23 Angol Indl. Estate,  
Udyambag,  
Belgaum - 590 008. INDIA.

Phone :- +91-(0831)-2443448  
Fax :- +91-(0831)-4202340  
E-mail :- prismhydraulics@gmail.com