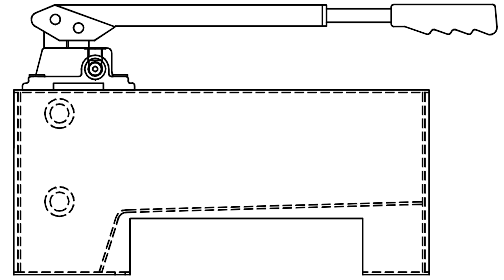


FEED AND POWER HAND PUMP MODEL : HP5012 / HP5016 SERIES

Description

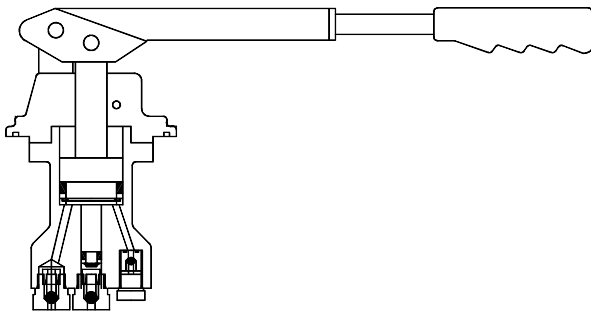
Automatic change-over from high discharge at low pressure to low discharge at high pressure. Heavy duty construction with hardened and ground piston. Renewable Suction, Delivery, Relief, and Release valve parts. Integral Relief and Release valves.

Collapsible Hand Lever for compact size and short hand movement at low pressure.

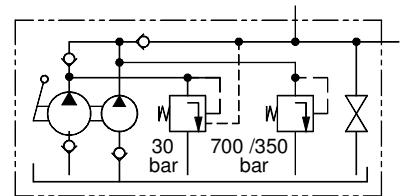


Section

(Pump cartridge)



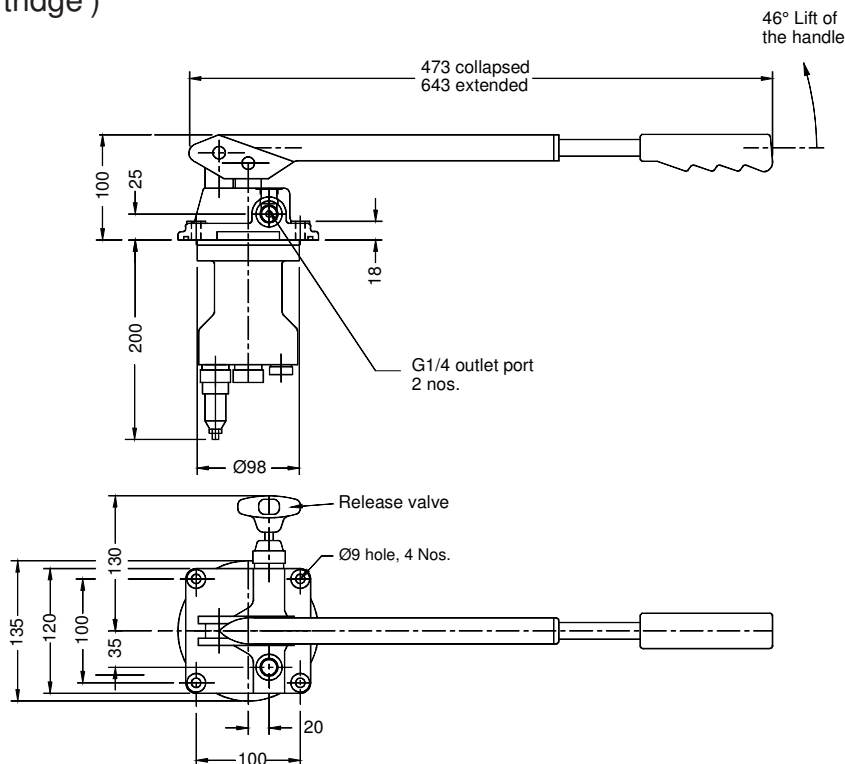
Hydraulic Symbol



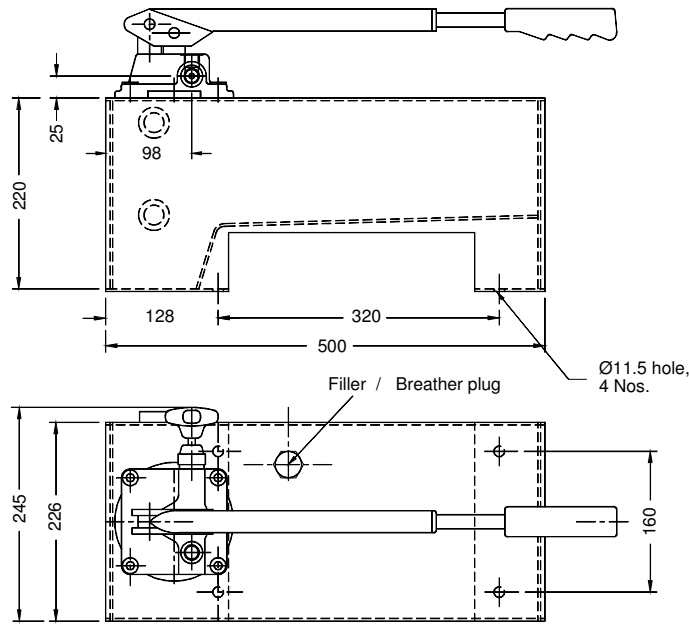
Unit Dimensions

(Pump cartridge)

Dimensions in mm.



FEED AND POWER HAND PUMP MODEL : HP5012 / HP5016 SERIES



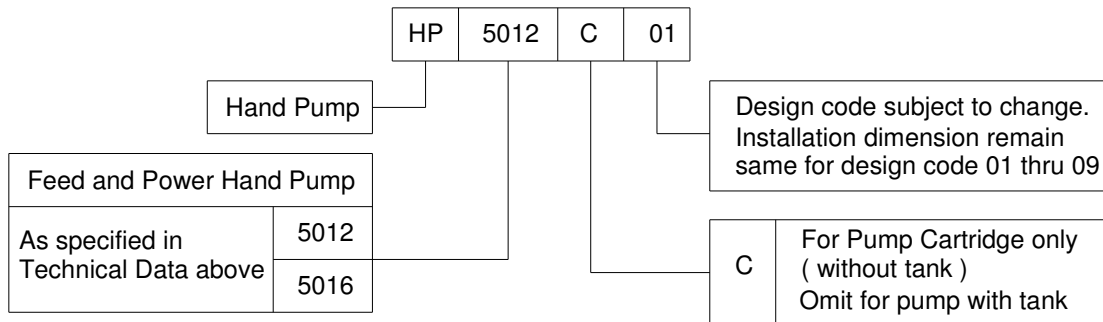
Technical Specifications

Construction	Differential piston with single hand lever
Hydraulic Medium	Mineral oil (ISO VG 46)
Max.working pressure	HP 5012 700 bar HP 5016 350 bar
Flow capacity	

Model	Flow per stroke cm ³	
	Up to 30 bar	Above 30 bar
HP 5012	49	2.8
HP 5016	49	5

Oil tank capacity	13 Ltrs.
Oil tank displacement	10 Ltrs.
Force required at the end of the hand lever at Max.pressure	400 N approx.
Mass	Pump cartridge only 11 kg Pump with oil tank (Without oil) 22 kg

Ordering Code



All rights reserved
Subject to revision

PRISM HYDRAULICS PVT. LTD.
B-23 Angol Ind. Estate
Udyambag,
Belgaum - 590 008, INDIA.

Phone :- +91-(0831)-4202340
Fax :- +91-(0831)-2443448
E-mail :- prismhydraulics@gmail.com