

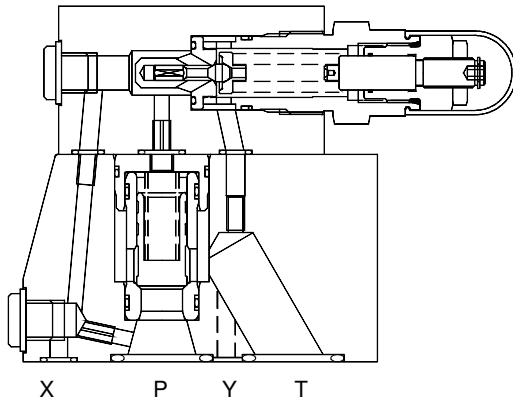
PILOT OPERATED PRESSURE RELIEF VALVE MODEL : PRV

Description

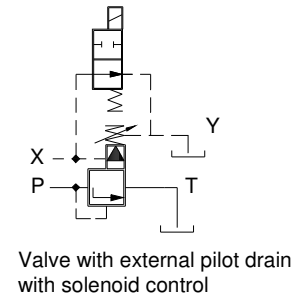
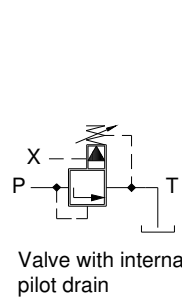
Two stage poppet type Relief Valve.
Solenoid Unloading facility as an optional feature.
Vent connection for remote control.
Three standard sizes in subplate mounting construction.
Five standard sizes in threaded construction.



Section



Hydraulic Symbol



Unit Dimensions

Valve : subplate mounting

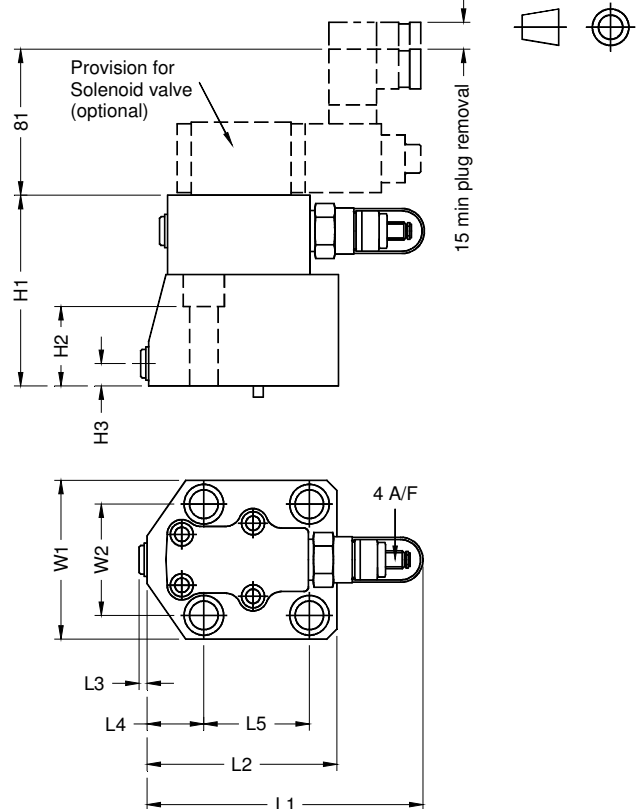
Table No.1

Size	10	20	30
H1	120	120	143
H2	82	76	93
H3		12	14
L1	158	175	182
L2	80	120	155
L3	0	5	5
L4	13.1	35.9	47.3
L5	53.8	66.7	88.9
W1	80	100	120
W2	53.8	70	82.6
Mass (kg)	4.8	6.7	12

Table No.2

Size	Valve fixing screws	Tightening torque Nm
10	M12x100L	125
20	M16x100L	300
30	M18x120L	500

Dimensions in mm.



PILOT OPERATED PRESSURE RELIEF VALVE MODEL : PRV

Threaded body

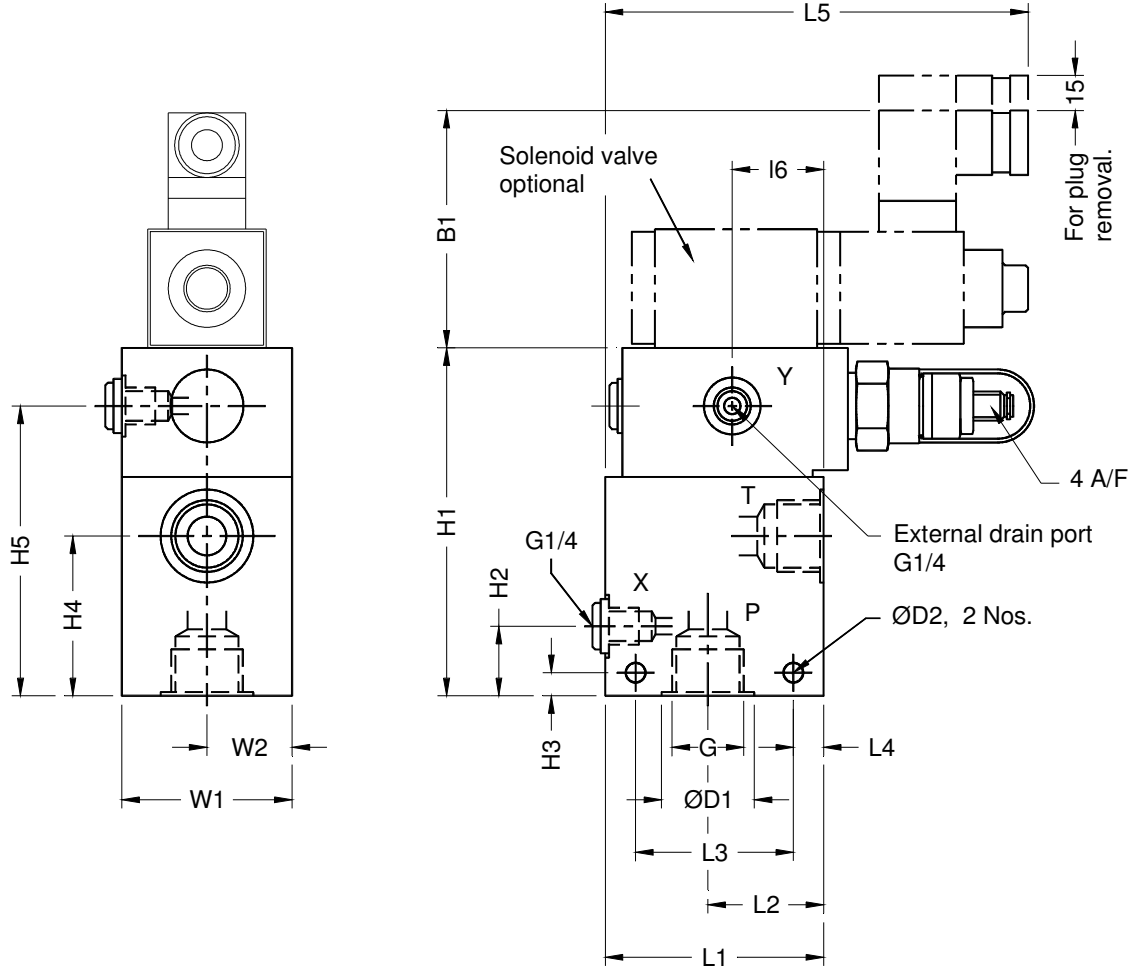


Table No.3

Size	Mass kg	G	H1	H2	H3	H4	H5	L1	L2	L3	L4	L5	L6	W1	W2	ØD1	ØD2
10	5	G1/2				62										30	9 9
16	4.9	G3/4	135 133	27	10	62	100	85	45	62	14	157	35.5	66	33	36	
20	4.8	G1				57										44	
30	9.5	G1-1/2	170	42	13	80	77.5	100	54	72	18	163	41.5	86	43	50	11

PILOT OPERATED PRESSURE RELIEF VALVE MODEL : PRV

Subplate

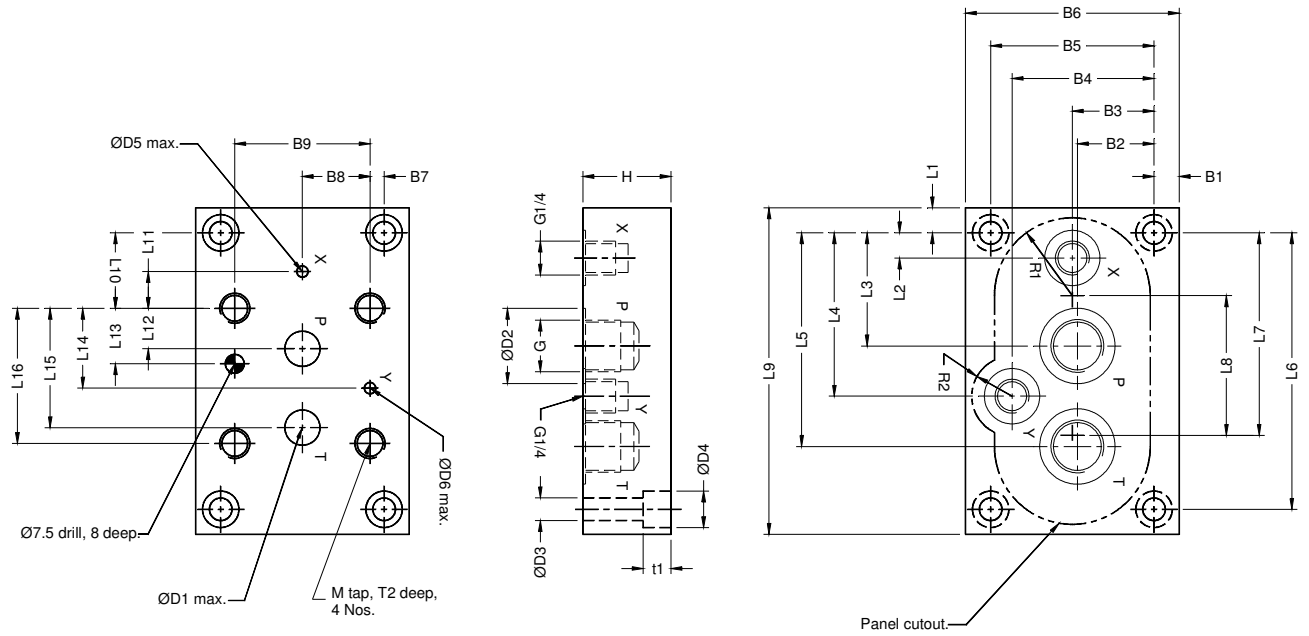


Table No.4

Size	Model	B1	B2	B3	B4	B5	B6	B7	B8	B9	ØD1	ØD2	ØD3	ØD4	ØD5	ØD6	G	L1	L2	L3
10	PRV10G03	10	30.5	32.5	56.5	65	85	5.6	26.9	53.8	14	30	9	14.5	4.5	4.5	G1/2	10	10	45
20	PRV20G04	12	40.5	40.5	72.5	81	105	5.5	35	70	18	36	14	20	6.3	6.3	G3/4	12	8	52
	22.5										44	G1								
30	PRV30G06	12	50.5	50.5	92	101	125	9.2	41.3	82.6	25	54	14	20	6.3	6.3	G1-1/4	12	13	63
	31.7										60	G1-1/2								

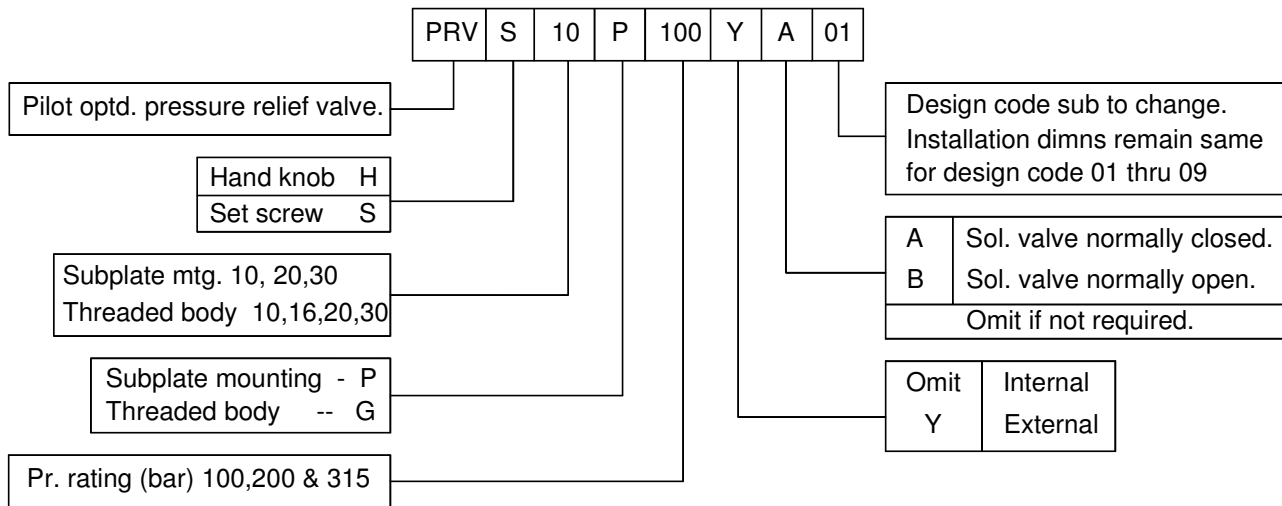
Size	Model	L4	L5	L6	L7	L8	L9	L10	L11	L12	L13	L14	L15	L16	M	R1	R2	T1	T2	H
10	PRV10G03	65	85	110	85	60	130	30	0	22.1	22.1	31.8	47.5	53.8	M12	31	16	22	22	35
20	PRV20G04	84.5	112	146	124	102	170	48	23.8	11.1	33.4	43.7	55.6	66.7	M16	30	16	13	26	40
	PRV20G05																			
30	PRV30G06	105	138	176	139	90	200	55	31.8	12.7	44.5	54.9	76.2	88.9	M18	40	16	15	30	42
	PRV30G07																			

PILOT OPERATED PRESSURE RELIEF VALVE MODEL : PRV

Technical Specifications

Construction	Two stage poppet valve
Mounting	Subplate mountg as per ISO 6264
	Threaded bodies as per company standards
Mounting position	Optional
Flow direction	From P to T
Operating pressure	
For valves with internal drain	For port P & X 315 bar.
	For port T 60 bar.
For valves with external drain	For port P and X 315 bar
	For port T 315 bar.
	For port Y 60 bar
Hydraulic medium	Mineral oil.
Viscosity range	10 cSt to 380 cSt
Fluid temperature range	-20 c to +70 c
Fluid cleanliness requirement	As per ISO 16 / 13.
Maximum flow handling capacity	Size 10 100 l / min.
	Size 20 200 l / min.
	Size 30 400 l / min.
Mass	Refer individual table

Ordering code



All rights reserved
subject to revision.