

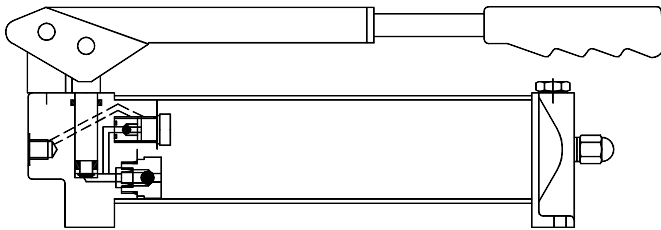
HAND PUMP MODEL : HP12 AND HP16 SERIES.

Description

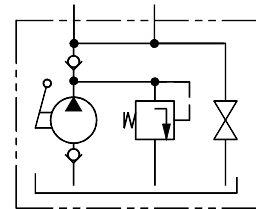
Heavy duty construction with hardened & ground piston.
Renewable Suction, Delivery, Relief and Release valve parts.
Integral Relief & Release valves.
Collapsible hand lever for compact size and short hand movement at low pressure.



Section

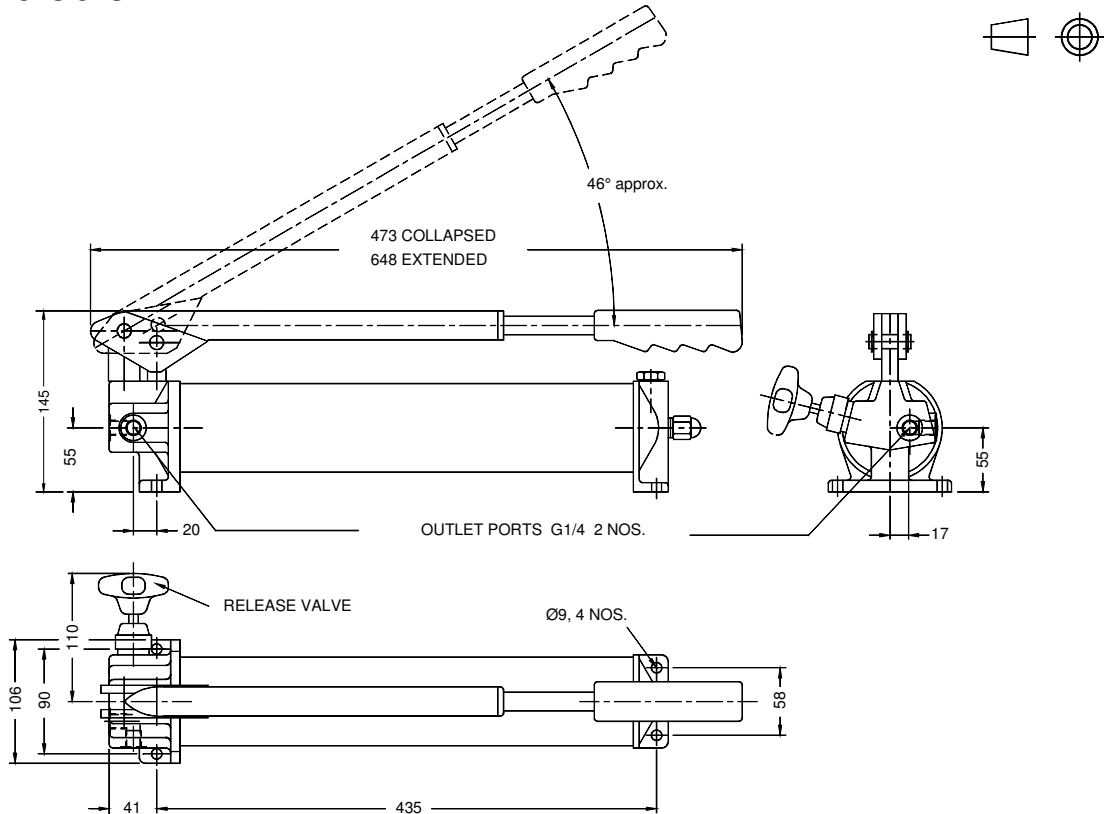


Hydraulic Symbol



Unit Dimensions

Dimensions in mm.

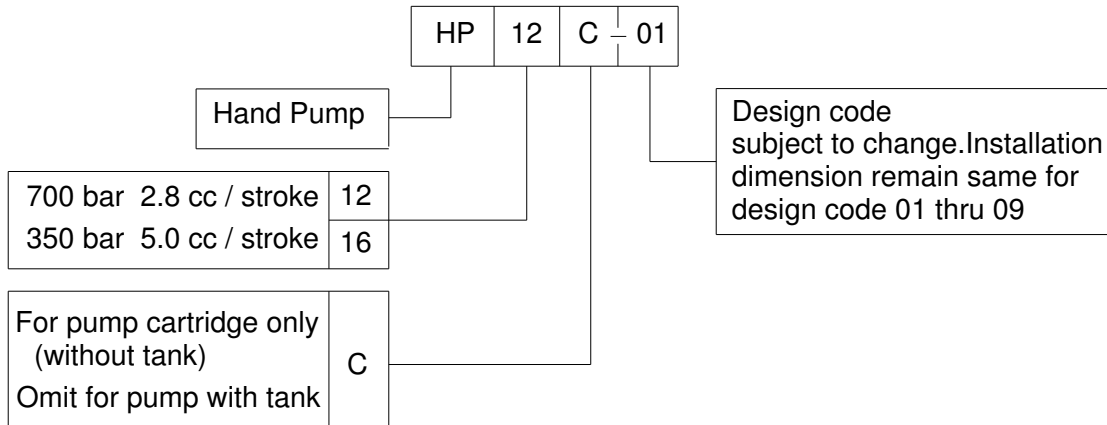


HAND PUMP MODEL : HP12 AND HP16 SERIES

Technical Specifications

Construction	Sealed piston with ball type suction & delivery valve
Hydraulic Medium	Mineral oil (ISO VG 46)
Max.working pressure	HP 12 & HP 12C 700 bar HP 16 & HP16 C 350 bar.
Flow capacity	HP 12 & HP 12C 2.8 cc / stroke HP 16 & HP 16C 5.0 cc / stroke
Oil tank capacity	1.2 Ltrs.
Oil tank displacement	1.0 Ltr
Force required at the end of the hand lever at Max.pressure	400 N approx.
Mass	9 kg (without oil)

Ordering Code



All rights reserved
Subject to revision

PRISM HYDRAULICS PVT. LTD.
B-23 Angol Ind. Estate
Udyambag,
Belgaum - 590 008, INDIA.

Phone :- +91-(0831)-2443448
Fax :- +91-(0831)-4202340
E-mail :- prismhydraulics@gmail.com