

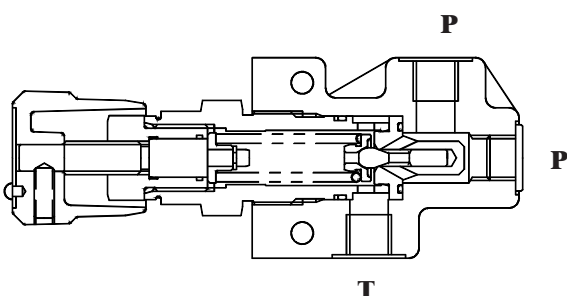
DIRECT OPERATED PRESSURE RELIEF VALVES MODEL : DRV

Description

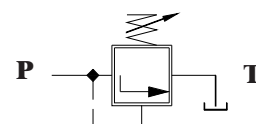
Direct operated valve.
Guided poppet design
Cushion arrangement for greater stability and noise control.
Three sizes - - - - - 06, 10 & 20
Three mounting styles - - Threaded cartridge
Threaded port body
Subplate mounting body.
Seven pressure ranges - - Upto 25, 50, 100, 200, 315, 400 & 630 bar.
Two options for pressure adjustment - - - - - With set screw and lock nut
With hand knob.



Section



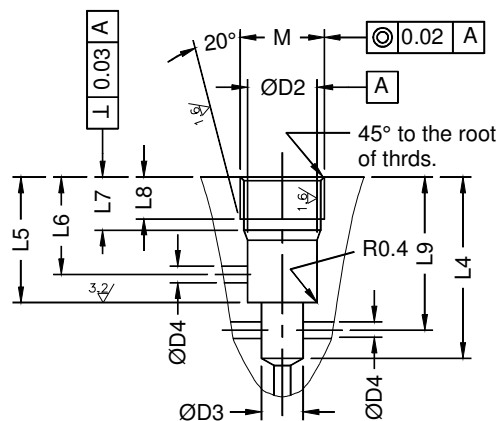
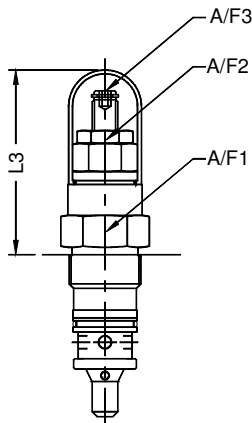
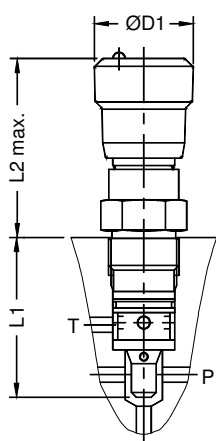
Hydraulic Symbol



Unit Dimensions

Dimensions in mm.

Threaded cartridge and cavity details



Cartridge with hand knob for pressure adjustment

Cartridge with set screw for pressure adjustment

Cartridge cavity mounting details

Table No. 1

Size	Mass kg	A/F1	A/F2	A/F3	M	ØD1	ØD2	ØD3	ØD4	L1	L2	L3	0.5 L4	0.2 L5	0.2 L6	0.2 L7	L8	L9	Tightening torque N-m
O6	0.5	30	19	4	M28x1.5	40	25	15	6	64	72	72	65	45	35	19	15	55	120
10	1	36	22	5	M35x1.5	48	32	19	10	77	85	85	80	52	41	23	18	69	140
20	1.7	46	22	5	M45x1.5	60	40	24	20	103	88	88	110	70	54	27	21	91.5	170

DIRECT OPERATED PRESSURE RELIEF VALVES MODEL : DRV

Threaded port body

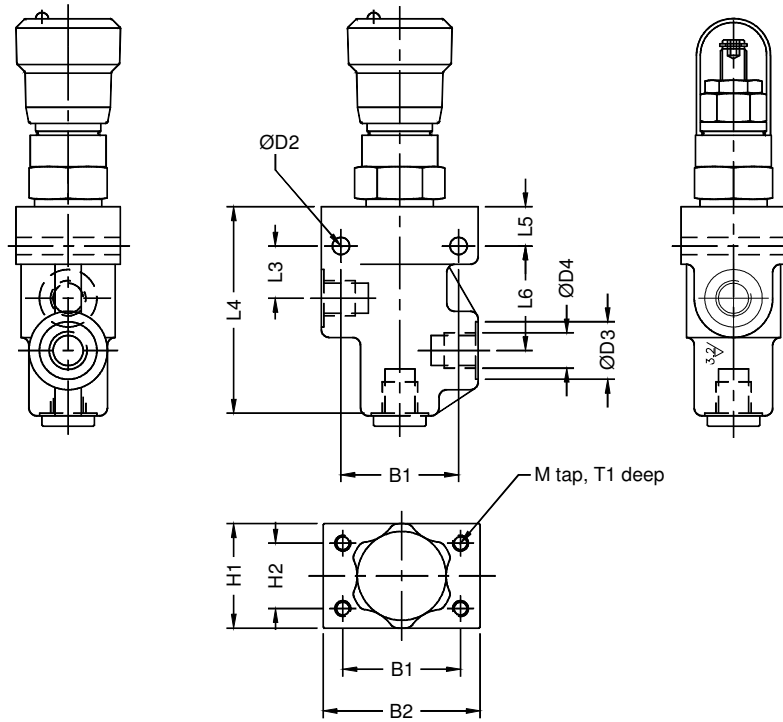


Table No. 2

Size	Mass kg	B1	B2	ØD2	ØD3	ØD4	M	L3	L4	L5	L6	H1	H2	T1
O6	1.25	45	60	6.6	22	G1/4	M6x1	20	80	15	40	40	25	11
10	2.9	60	80	9	30	G1/2	M8x1.25	22	100	20	49	60	40	15
20	6.3	70	100	9	44	G1	M8X1.25	34	135	20	65	70	50	15

Subplate mounting body

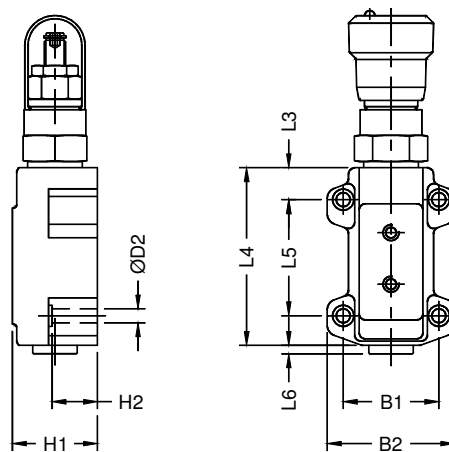


Table No. 3

Size	Mass kg	B1	B2	D2	L3	L4	L5	L6	H1	H2
O6	1.15	45	60	6.6	15	80	55	4	40	21
10	2.5	60	80	9	20	100	70	5	55	28
20	8.1	70	100	9	20	135	100	5	70	70

DIRECT OPERATED PRESSURE RELIEF VALVES MODEL : DRV

Subplate

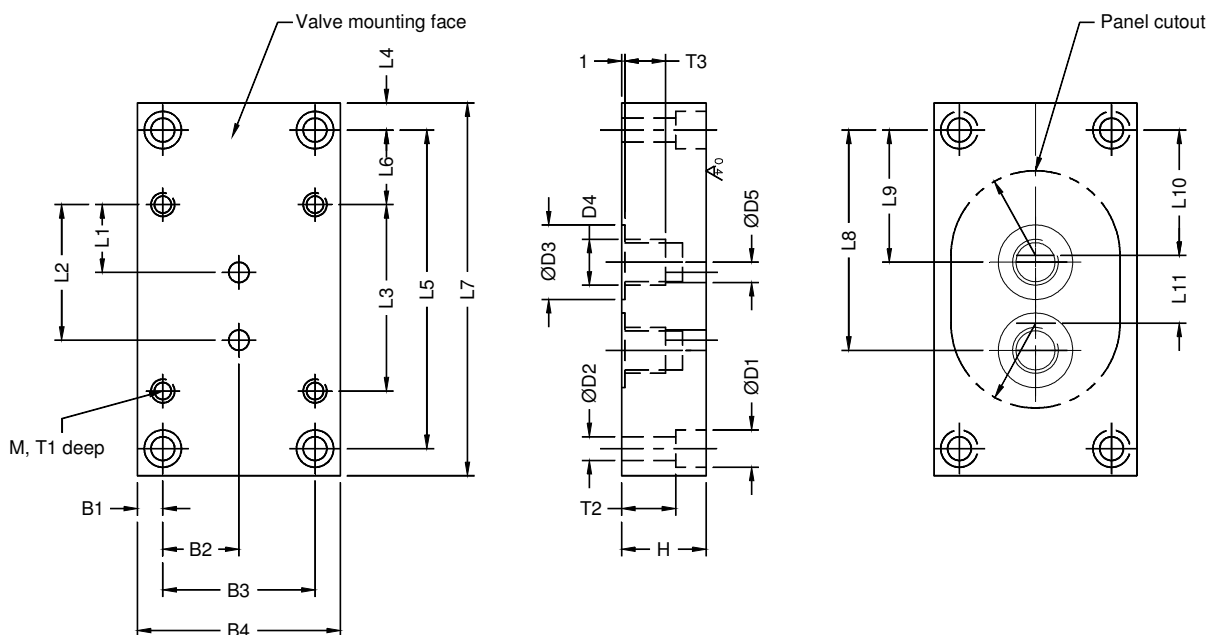


Table No. 4

Size	Model	Mass kg	B1	B2	B3	B4	ØD1	ØD2	ØD3	ØD4	ØD5	H	L1	L2	L3	L4	L5	L6
O6	DRVO6G01	1.2	7.5	22.5	45	60	11	7	22	G1/4	6	25	20	40	55	8	94	22
10	DRV10G02	2.4	10	30	60	80	11	7	25	G3/8	10	30	21	45	70	10	115	27.5
10	DRV10G03	2.4	10	30	60	80	11	7	30	G1/2	10	30	21	45	70	10	115	27.5
20	DRV20G05	5.3	15	35	70	100	17.5	11.5	44	G1	20	40	34	65	100	15	140	20

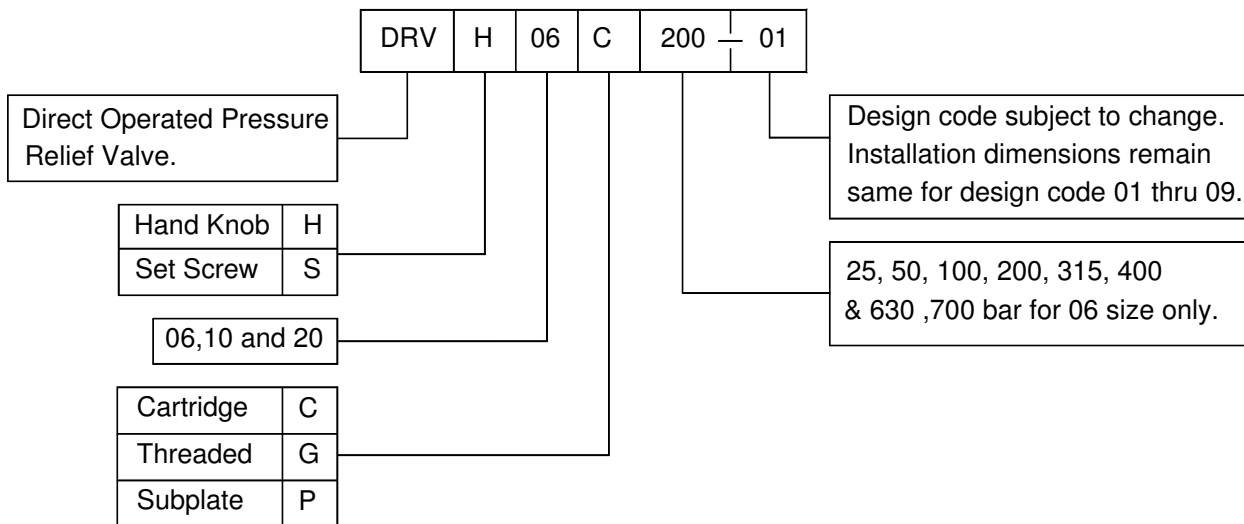
Size	Model	L7	L8	L9	L10	L11	M	R	T1	T2	T3	Valve fixing screws	Tightening torque N-m
O6	DRV06G01	110	65	39	37	20	M6	25	10	16	12	M6x30L	15
10	DRV10G02	135	80.5	40.5	47.5	20	M8	35	12	16	12	M8x40L	35
10	DRV10G03	135	80.5	40.5	47.5	20	M8	35	12	16	14	M8x40L	35
20	DRV20G05	170	97	42	50	40	M8	40	22	27	20	M8x45L	35

DIRECT OPERATED PRESSURE RELIEF VALVES MODEL : DRV

Technical Specifications

Construction	Direct acting, poppet type.
Mounting style	Threaded cartridge, Threaded port body or subplate mounting body.
Interface	Factory standard
	Note :- Subplate mounting valves having interface as per I.S.O. 6264-AB-03-4-C (Draft) and I.S.O. 6264-AR-06-2-A (Draft) are also available on request.
Mounting position	Optional
Flow direction	From P to T
Operating pressure for port P	400 bar.
for port T	315 bar.
Pressure setting ranges	Upto 25, 50, 100, 200, 315, 400 & 630 bar.
Hydraulic medium	Mineral oil
Viscosity range	20 cSt to 300 cSt
Fluid temperature range	-20 to +70 degree celcius
Fluid cleanliness requirement	As per I.S.O. 16/13 or better.
Mass	Refer individual table.

Ordering Code



Note :- Subplate to be ordered seperately.

All rights reserved
 subject to change.