

2 - WAY FLOW CONTROL VALVE

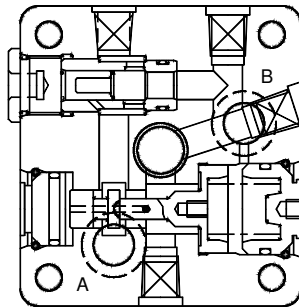
MODEL : 2FCV

Description

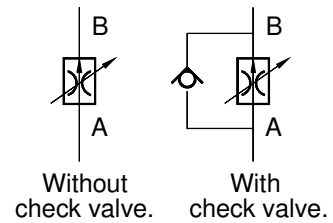
Flow control valves are 2 way control valves. They serve to throttle an oil flow independent of pressure. (Pressure compensated).
Check valve option for reverse free flow.
Stroke limiter option for surge free starts at any flow setting.
Thumb screw provision to retain valve setting.
Flow control in both directions by means of rectifier sandwich plate.



Section

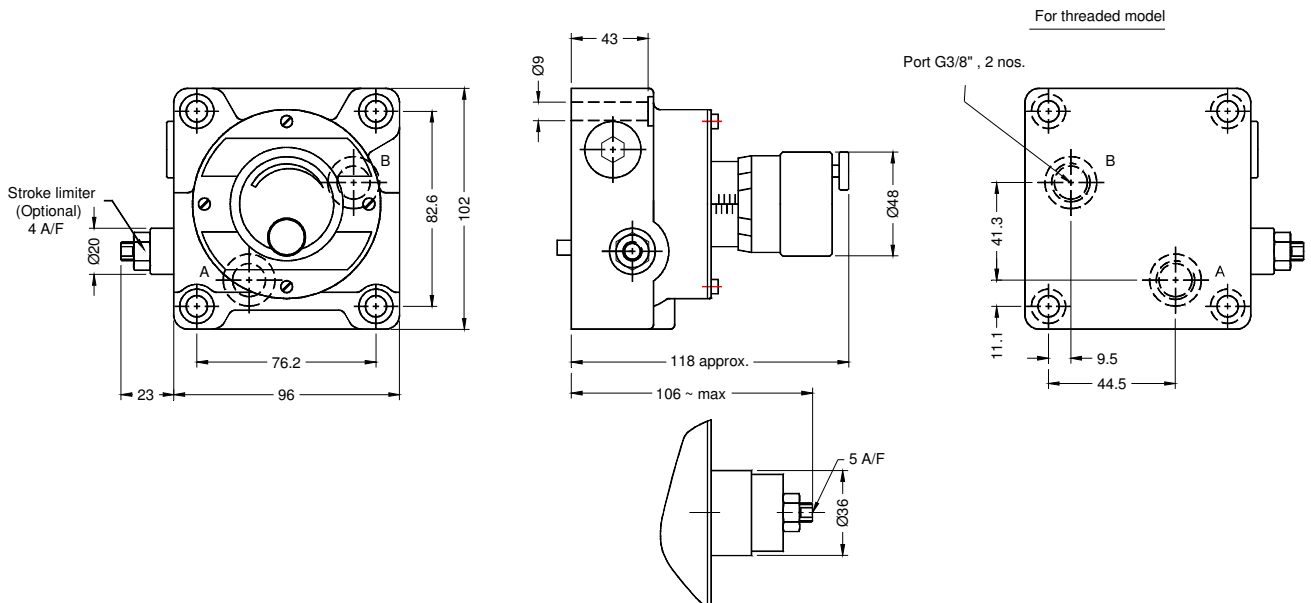
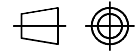


Hydraulic Symbol



Unit Dimensions

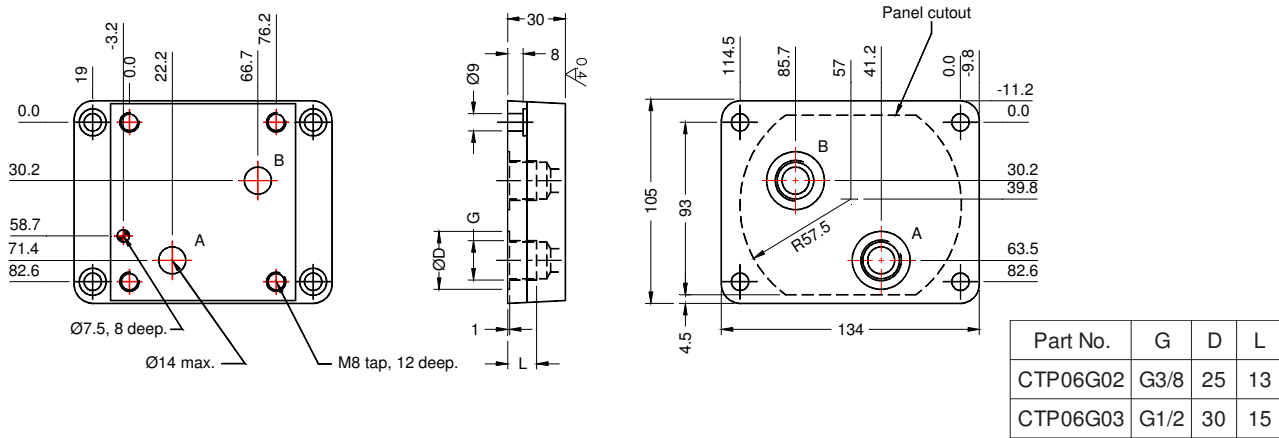
Dimensions in mm.



2 - WAY FLOW CONTROL VALVE

MODEL : 2FCV

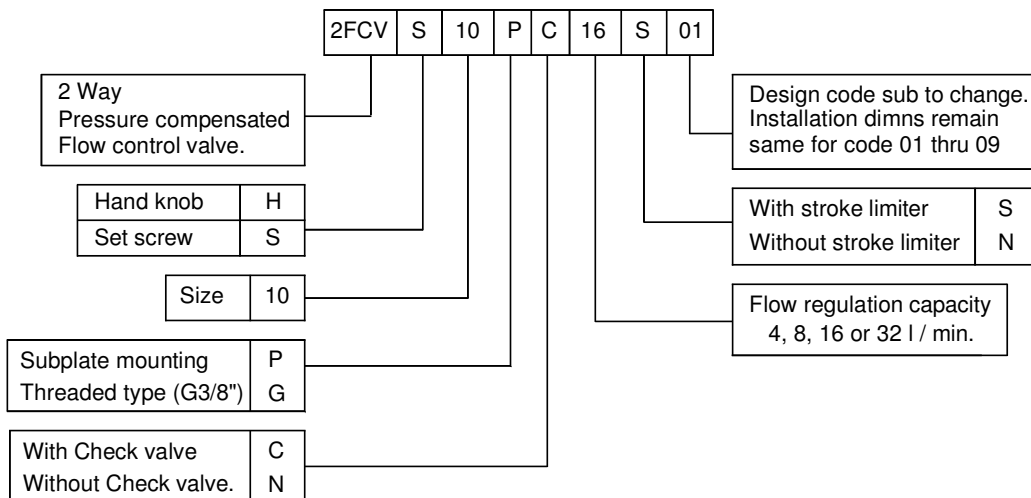
Subplate:



Technical Specifications.

Construction	Differential piston with sharp edge orifice.
Mounting	Subplate mounting.
Mounting position	Optional.
Mounting interface	CETOP 06, ANSI 2 F02, ISO 6263-06-2-A.
Flow direction	Controlled flow from Port A to B with optional reverse-free check valve
Operating pressure	315 bar.
Hydraulic medium	Mineral oil.
Viscosity range	10 cSt to 380 cSt.
Working temperature range	-20 °c to + 70 °c
Fluid cleanliness requirement	As per ISO 16 / 13 .
Flow controlling capacity	4, 8, 16 or 32 l / min.
Mass	4.2 kg. approx.

Ordering Code



All rights reserved
subject to revision.

PRISM HYDRAULICS PVT. LTD.
B-23, Angol Indl. Estate,
Udyambag,
Belgaum - 590 008. INDIA.

Phone :- +91-(0831)-2443448
Fax :- +91-(0831)-4202340
E-mail :- prismhydraulics@gmail.com