

## PILOT OPERATED CHECK VALVE ( EXTERNAL DRAIN)

MODEL :- CLV

### Description

Seat type pilot operated check valve with external drain

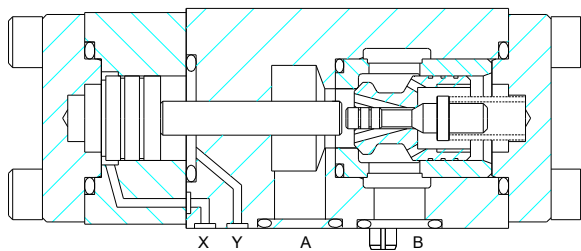
Interface conforming to ISO 5781

Three sizes in subplate mounting construction

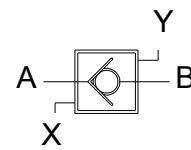
Six sizes in threaded body construction



### Section



### Hydraulic symbol



### Unit Dimensions

#### Threaded port body

Dimensions in mm.

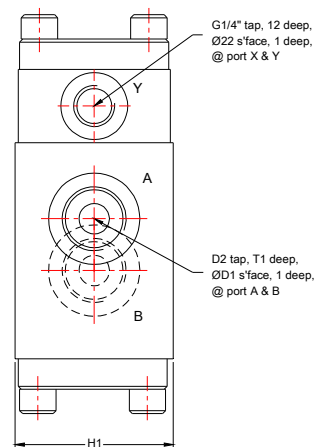
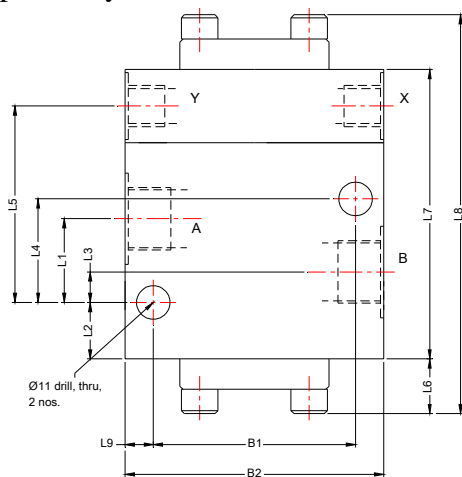


Table No 1

Size	Mass kg	B1	B2	D1	D2	H1	L1	L2	L3	L4	L5	L6	L7	L8	L9	T1
10	3.1	66.5	85	30	G1/2	47	27.5	18.5	10.5	33.5	64.5	18	95	131	9.25	14
20	5.5	79.5	100	44	G1	58	36.7	17.3	13.3	50.5	83.7	20	114	154	10.3	18
30	10.4	97	120	60	G1-1/2	75	54.5	15.5	20.5	73.5	112.5	29	145	203	11.3	22

## PILOT OPERATED CHECK VALVE (EXTERNAL DRAIN)

MODEL :- CLV

Subplate mounting body

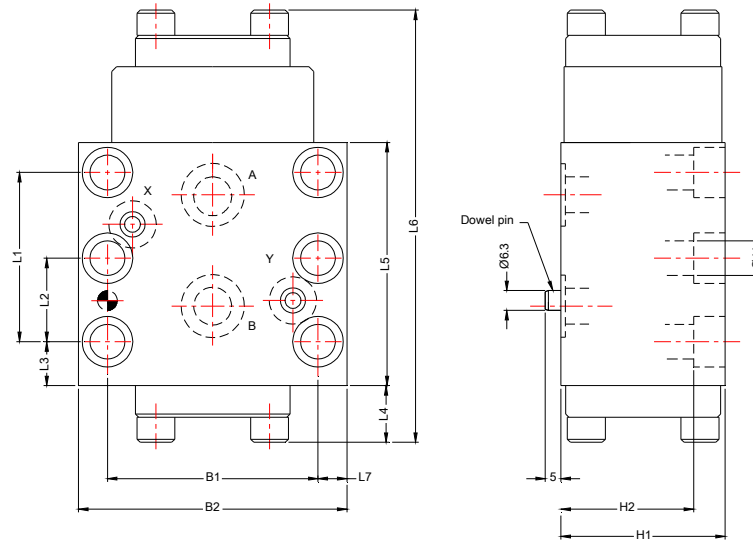


Table No 2

Size	Mass kg	B1	B2	H1	H2	L1	L2	L3	L4	L5	L6	L7
10	3.1	66.7	85	47	47	42.9	-	18.5	18	71	131	9.15
20	5.5	79.4	100	58	45	60.3	-	17.2	20	88	154	10.3
30	10.5	96.8	120	75	65	84.1	42.1	15.4	29	111	203	11.6

Subplate

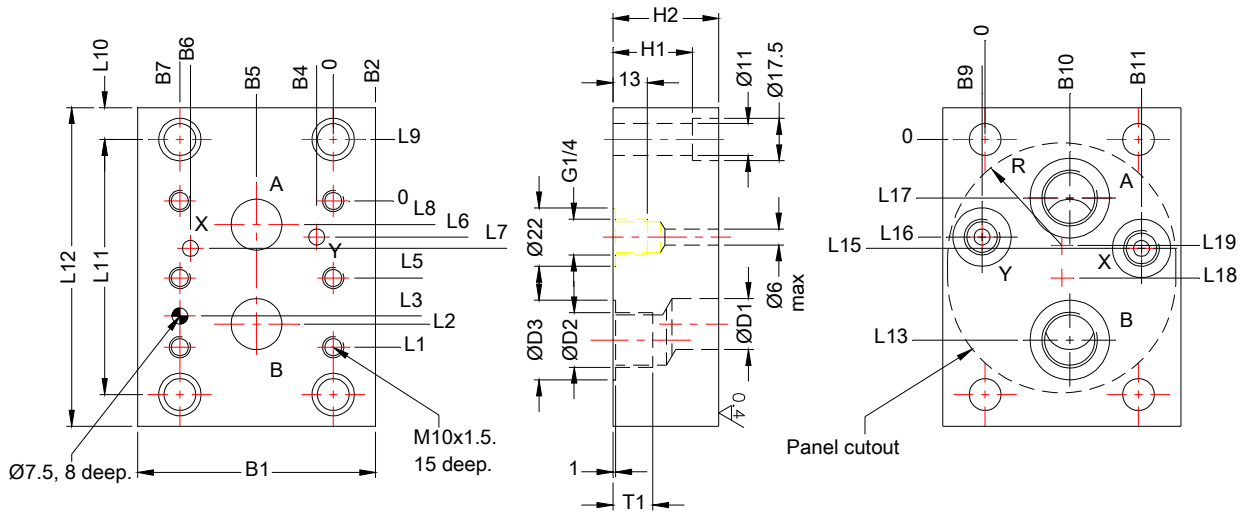


Table No 3

Size	Mass ks	B1	B2	B4	B5	B6	B7	B9	B10	B11	D1	D2	D3	H1	H2	L1	L2	L3	L5
10	CLV10G03	2.4	86	9.7	33.3	58.7	66.7	-7.9	33.3	58.7	13	G1/2	30	15	29	42.9	35.7	31.8	-
20	CLV20G05	5.2	112	16.3	39.7	73	79.4	3	39.7	75	22	G1	44	25	45	60.3	49.2	44.5	-
30	CLV30G07	8.5	140	21.6	48.4	92.9	96.8	1.6	48.4	98.5	31	G1-1/2	60	35	47	84.1	67.5	62.7	42.1

Size	Mass ks	L6	L7	L8	L9	L10	L11	L12	L13	L15	L16	L17	L18	L19	R	T1	Valve fixing screws	Tightening torque
10	CLV10G03	21.4	21.4	7.1	45.9	10	121	141	89	67.3	67.3	45	82	53	40	14	M10x60L,4nos.	70 Nm
20	CLV20G05	39.7	20.8	11.1	22	16	104	136	82	42.6	64	22	57	47	52	18	M10x60L,4 nos	70Nm
30	CLV30G07	59.6	24.6	16.7	33	10	150	170	115	60	99.1	35	90	60	65	22	M10x60L,4 nos	70Nm

## PILOT OPERATED CHECK VALVE ( EXTERNAL DRAIN)

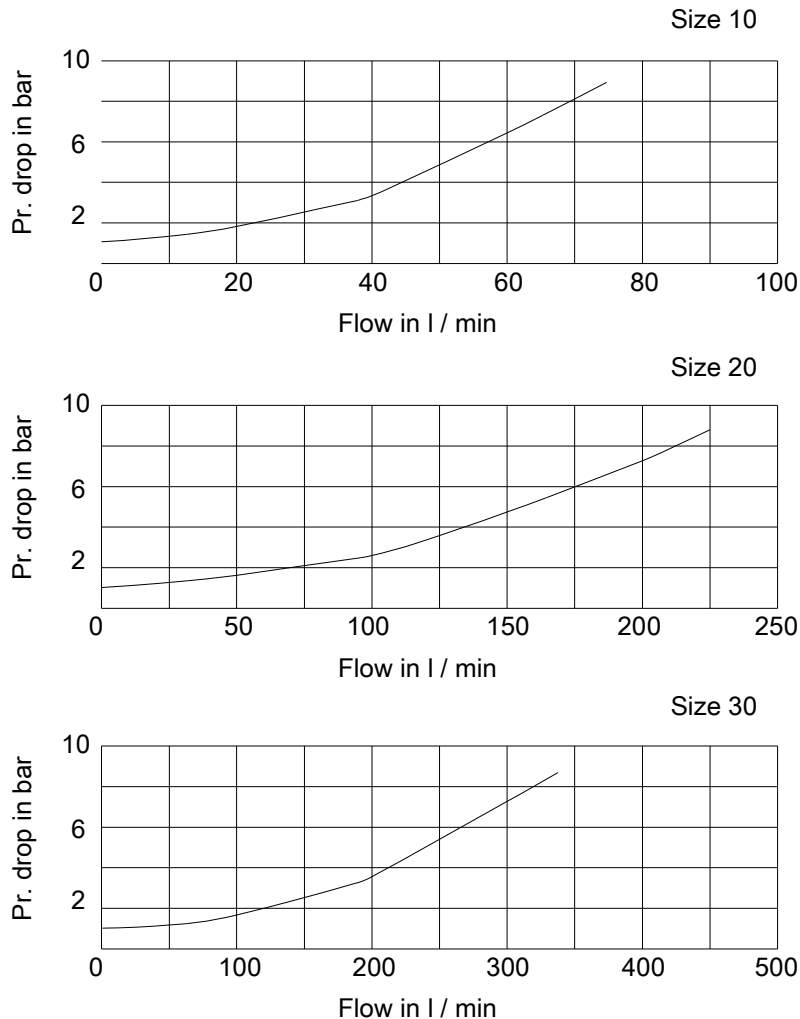
MODEL :- CLV

### Technical specifications

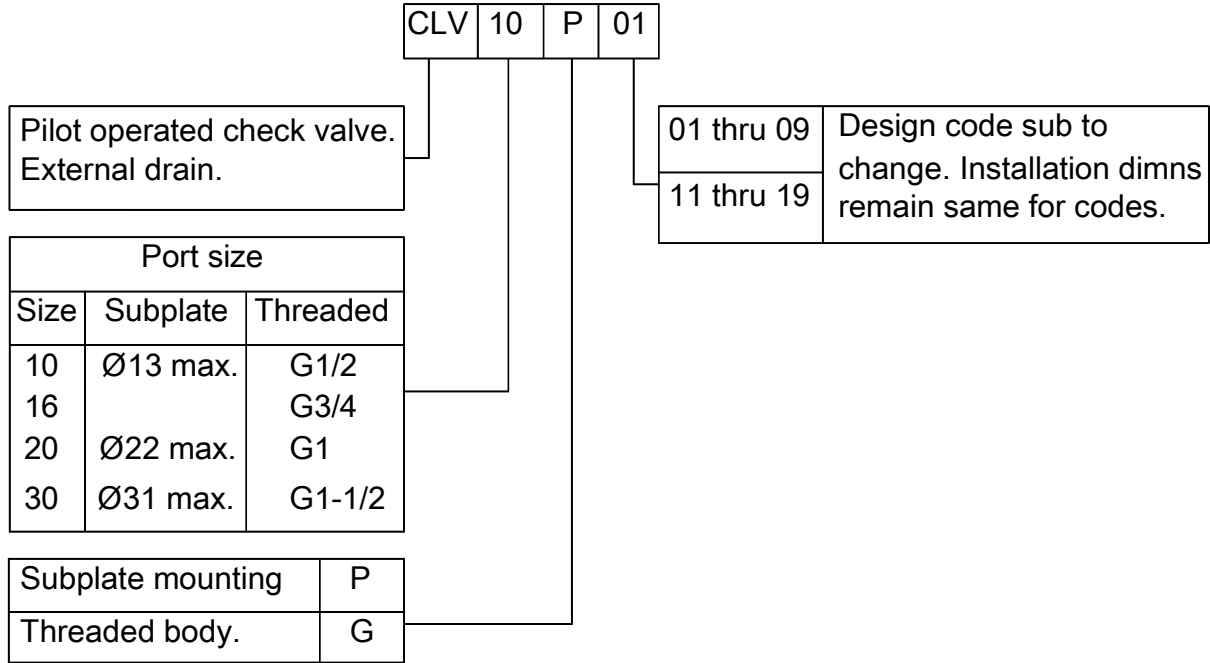
Construction .....	Seat type valve with decompression feature,externally drained.
Mounting type .....	Threaded ports or subplate mounting Interface conforms to ISO 5781
Mounting position .....	Optional
Direction of flow .....	Free flow from port A to port B Piloted flow from port B to port A
Operating pressure .....	315 for all ports.
Control pressure .....	5 to 315 bar
Cracking pressure .....	1 bar
Area ratio .....	Pilot piston : Decom poppet = 16 : 1 Pilot piston : Main poppet = 2 : 1 Pilot piston : Pusher pin = 6.25 : 1
Hydraulic medium .....	Mineral oil
Viscosity range .....	10 cSt to 380 cSt
Fluid teperature range .....	10 to +80 degree celcius
Fluid cleanliness requirement .....	As per ISO 16 / 13
Flow handling capacity .....	Refer graph below
Mass .....	Refer individual table

### Performance curve

Oil used : ISO VG46,Viscosity : 46 cST@ 40 °C, Temp @ test 40 °C



Ordering code



All rights reserved  
subject to revision.