

## PILOT OPERATED PRESSURE RELIEF VALVE CARTRIDGE TYPE PRV06\*C

### Description

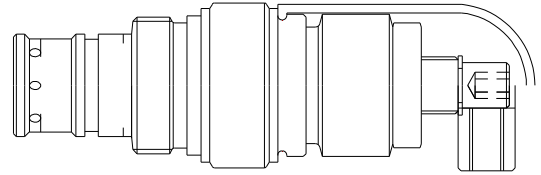
Pilot Operated Spool type Relief Valve Cartridge.

Low pressure override due to larger flow area.

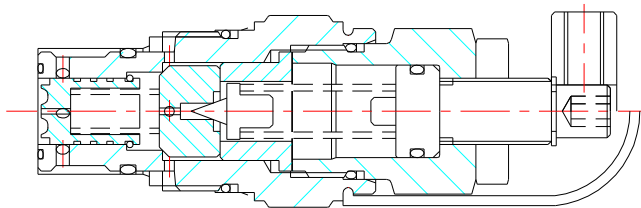
Two options for pressure adjustment,

- With set screw and lock nut.
- With hand knob and lock nut.

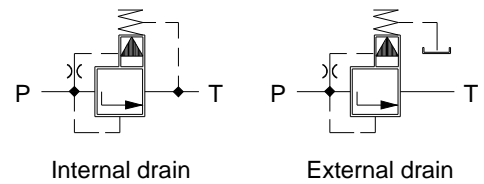
Internal drain valves can be converted to external drain.



### Section

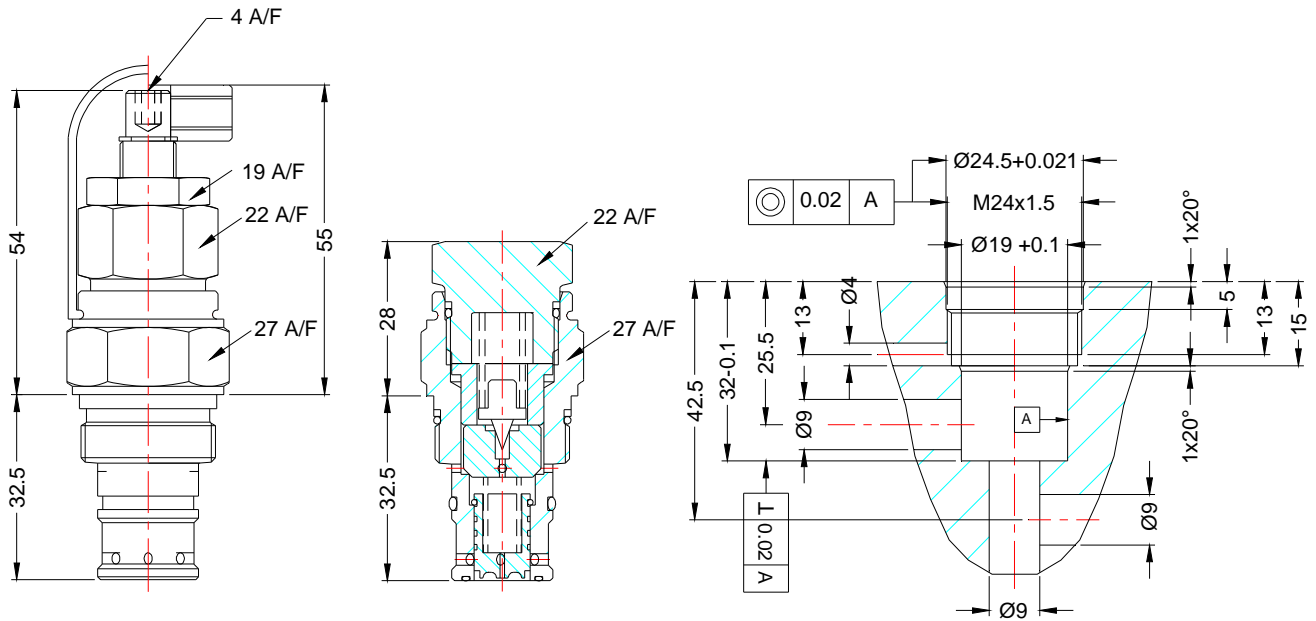
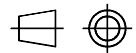


### Hydraulic symbol



### Unit Dimensions

Dimensions in mm.

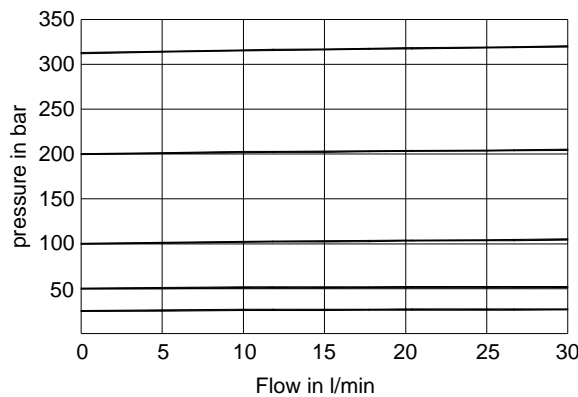


PILOT OPERATED PRESSURE RELIEF VALVE CARTRIDGE TYPE PRV\*06C

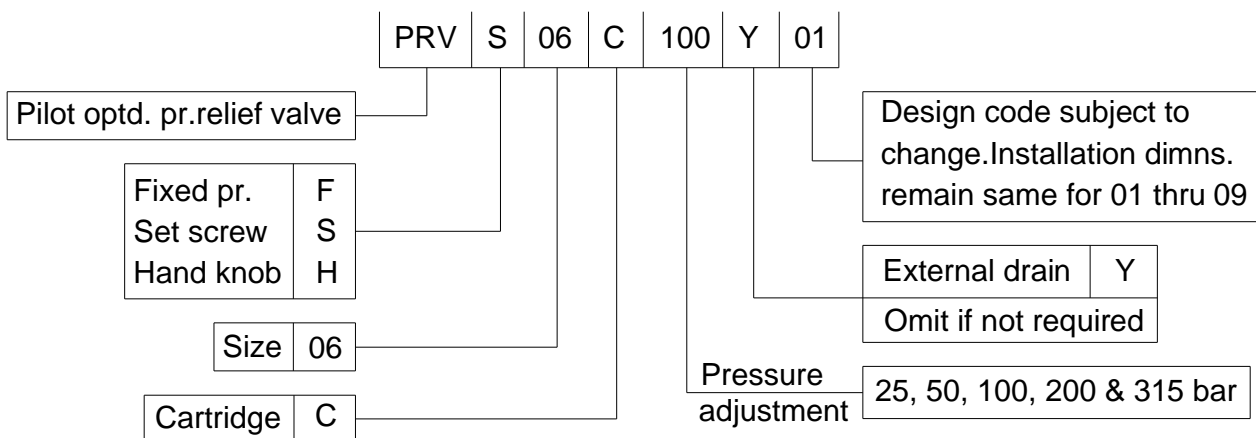
Technical specifications

Construction .....	Pilot Operated Spool Type
Mounting .....	Threaded cartridge, Factory standards.
Mounting position .....	Optional.
Flow direction .....	From port P to port T
Operating pr. For valves .....	For port P ..... 315 bar
	For port T ..... 60 bar
	For port Y ..... 60 bar
Hydraulic medium .....	Mineral oil.
Viscosity range .....	10 cSt to 380 cSt.
Fluid temperature range .....	-20 °C to +100 °C.
Fluid cleanliness requirement .....	As per ISO 16/13.
Maximum flow handling capacity .....	30 lpm.
Mass .....	0.2 kg

Performance curve  
Oil used :- ISO VG 46



Ordering code



All rights reserved  
subject to revision.

PRISM HYDRAULICS PVT. LTD.  
B-23 Angol Indl. Estate,  
Udyambag,  
Belgaum - 590 008. INDIA.

Phone :- +91-(0831)-2443448  
Fax :- +91-(0831)-4202340  
E-mail :- prismhydraulics@gmail.com