

PRESSURE CONTROL UNIT MODEL : PCU

Description

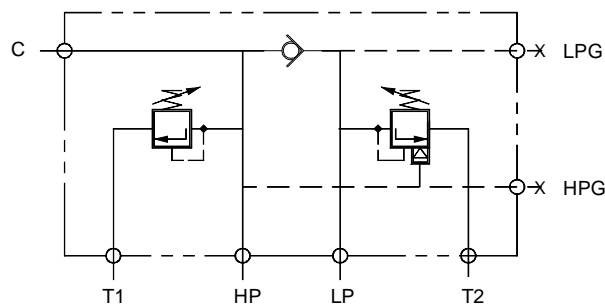
Pressure Control Unit is designed to control double pumps of Hi-Low system.

Unloads low pressure pump when system pressure rises above the Unloader pressure.

Relieves the High pressure pump when system pressure reaches the Relief valve setting.



Hydraulic Symbol



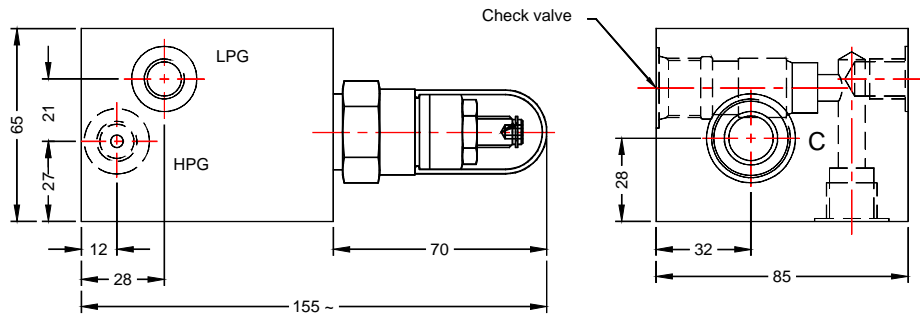
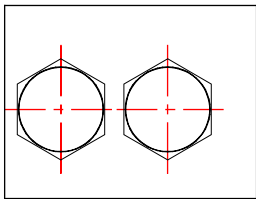
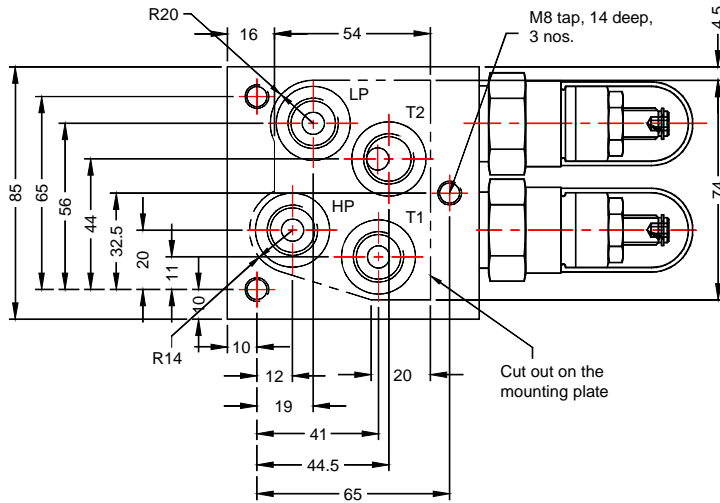
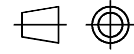
Connection details.

C	Out let connection
LPG	Gauge connection on low pressure pump.
HPG	Gauge connection on high pressure pump
T1	HP Tank
T2	LP Tank
HP	High pressure pump connection.
LP	Low pressure pump connection.

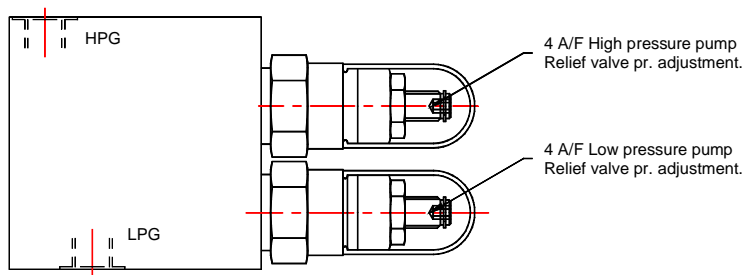
PRESSURE CONTROL UNIT MODEL : PCU

Unit Dimensions

Dimensions in mm.



Port details	
HP	G3/8
LP	G3/8
C	G1/2
HPG	G1/4
LPG	G1/4
T1	G3/8
T2	G3/8

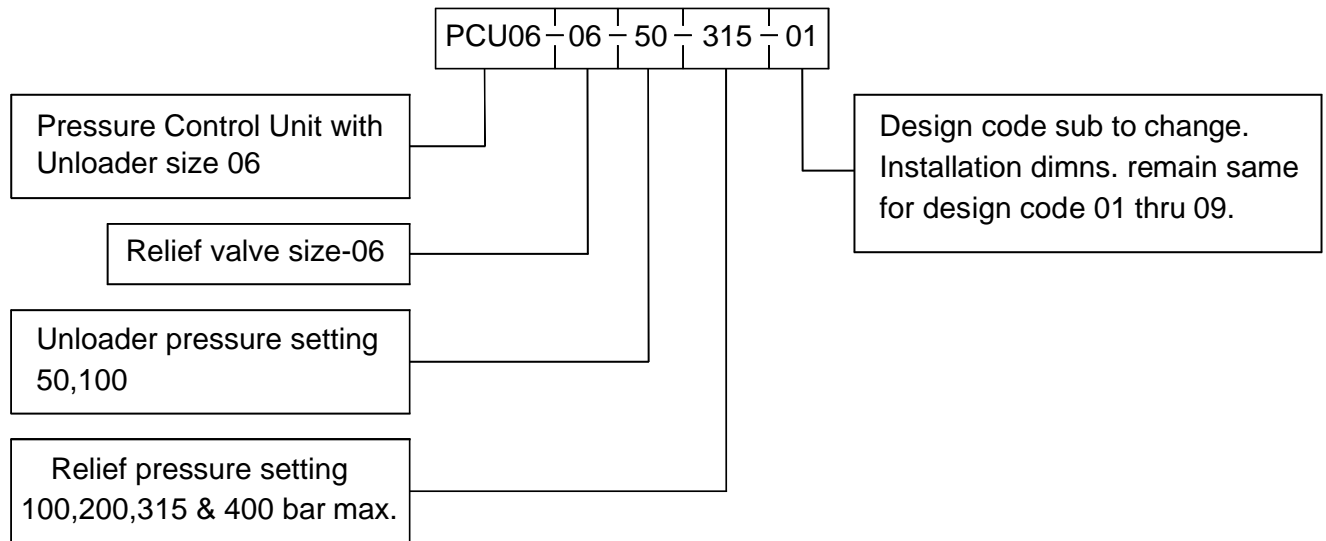


PRESSURE CONTROL UNIT MODEL : PCU

Technical Specification

Construction	Direct acting poppet type high pressure relief valve. Direct acting poppet type low pressure unloading valve.
Mounting	Threaded body (Factory standard)
Mounting position	Optional.
Direction of flow	As per hydraulic symbol.
Operating pressure	For low pressure pump port 50 bar max. For high pressure pump port 100, 200,315 & 400 bar.
Hydraulic Medium	Mineral oil.
Viscosity range	10 cSt to 380 cSt.
Fluid temperature range	-20 1c to +70 1c
Fluid cleanliness requirement	As per ISO 16 / 13 or better
Flow handling capacity	25 l / min.
Mass	4 kg. appox.

Ordering Code



PRESSURE CONTROL UNIT MODEL : PCU

All rights reserved
subject to revision.

PRISM HYDRAULICS PVT. LTD.
B-23 Angol Industrial Estate,
Udyambag,
Belgaum - 590 008. INDIA.

Phone :- +91-(0831)-2443448
Fax :- +91-(0831)-4202340
E-mail :- prismhydraulics@gmail.com