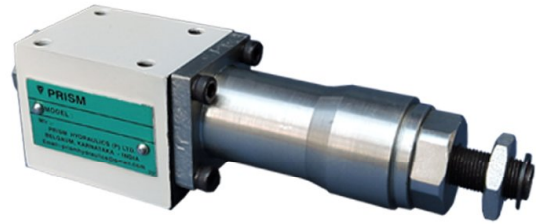


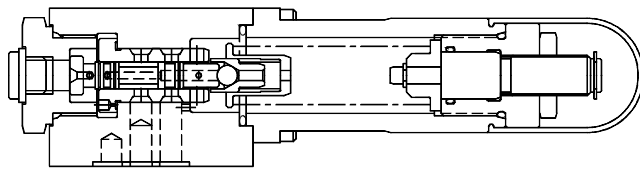
DIRECT OPERATED PRESSURE SEQUENCE VALVE MODEL : DSV

Description

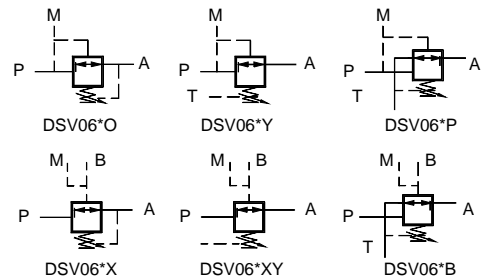
Direct acting spool type pressure sequence valve.
 Models available : Internal pilot, internal drain.
 External pilot, internal drain.
 Internal pilot, external drain.
 External pilot, external drain.
 Port A normally connected to
 port T : control at port P
 Port A normally connected to
 port T : control at port B
 Four pressure ratings 25, 50, 100 & 200
 For reverse free flow optional check valve can be
 supplied as a stackable model.



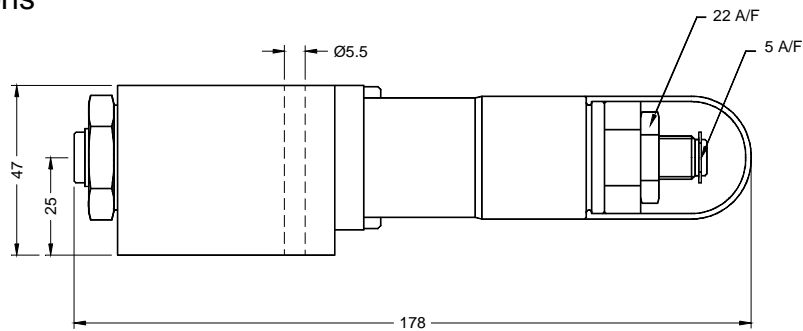
Section



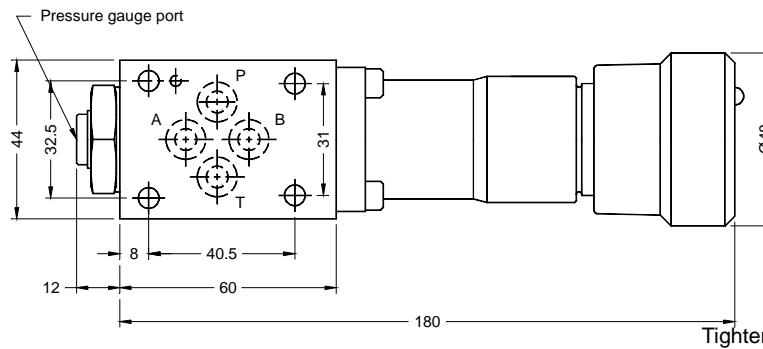
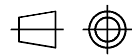
Hydraulic Symbol



Unit Dimensions



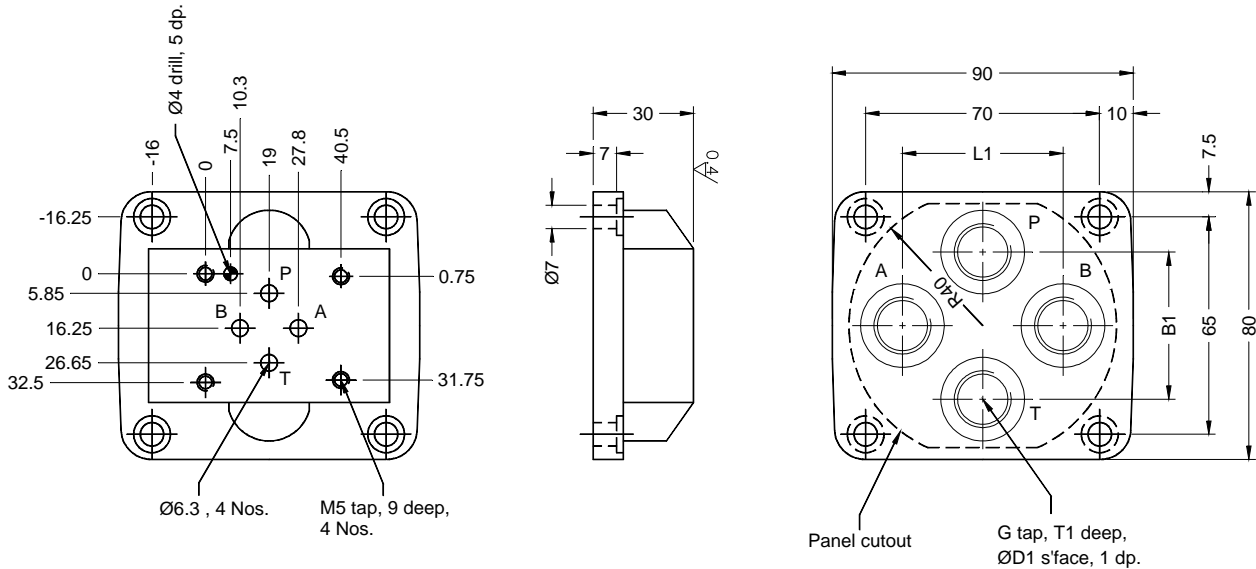
Dimensions in mm.



Tightening torque 6 Nm

DIRECT OPERATED PRESSURE SEQUENCE VALVE MODEL : DSV

Subplate



Subplate	B1	*D1	G	L1	T1
CTP03G01	34	22	G1/4	36	12
CTP03G02	44	25	G3/8	48	12

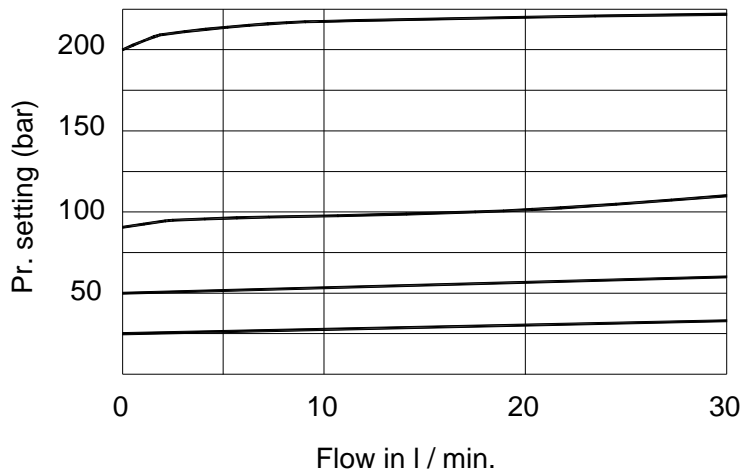
Technical Specifications

Construction	Direct operated spool type.
Mounting	As per ISO 6403
Mounting position	Optional
Flow direction	From port P to A
Operating pressure	For port P , A , and B 315 bar. For port T 60 bar max.
Hydraulic medium	Mineral oil.
Viscosity range	10 cSt to 380 cSt.
Fluid temperature range	-20 °C to +70 °C
Fluid cleanliness requirement	AS per ISO 16 / 13
Maximum flow handling capacity	Refer performance curves.
Mass	1.54 kg.

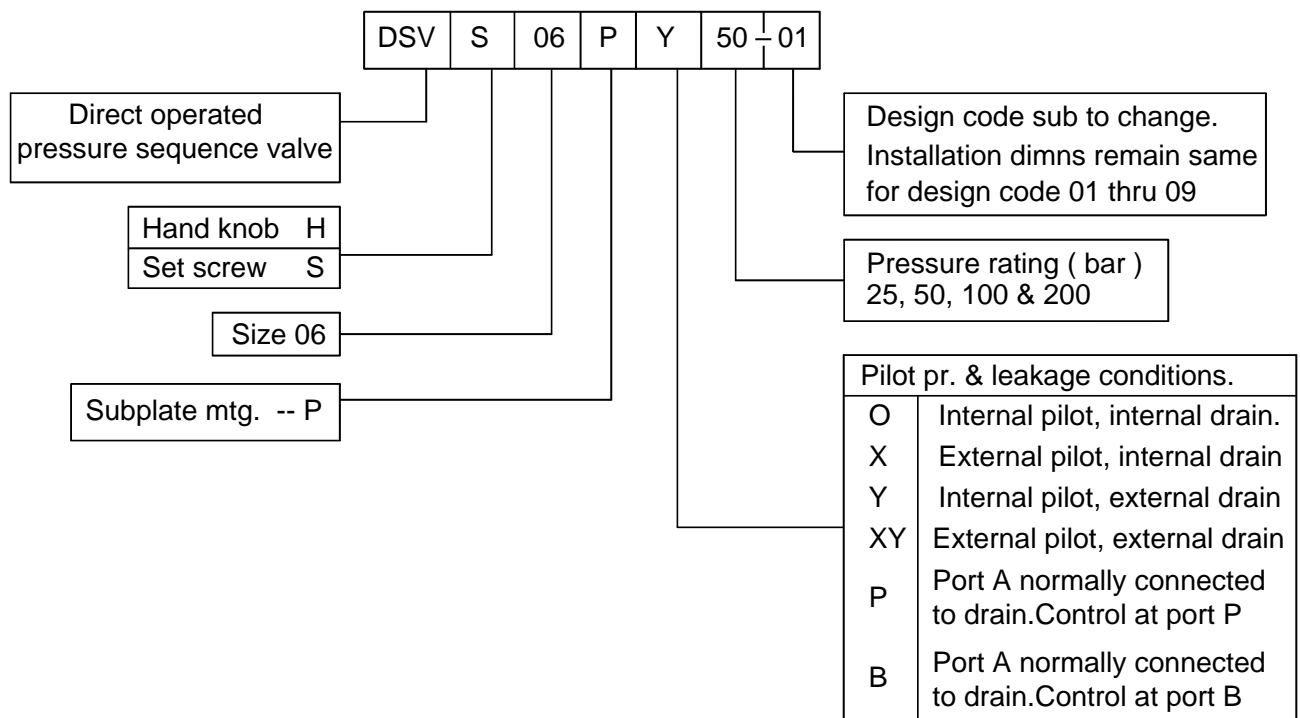
DIRECT OPERATED PRESSURE SEQUENCE VALVE MODEL : DSV

Performance Curve

Oil used : ISO VG68, Viscosity : 68 cSt @ 40°C Temp. @ test : 52 - 55°C



Ordering Code



DIRECT OPERATED PRESSURE SEQUENCE VALVE MODEL : DSV

All rights reserved
subject to revision.

PRISM HYDRAULICS PVT. LTD.
B-23 Angol Indl.Estate,
Udyambag,
Belgaum - 590 008. INDIA.

Phone :- +91-(0831)-2443448
Fax :- +91-(0831)-4202340
E-mail :- prismhydraulics@gmail.com