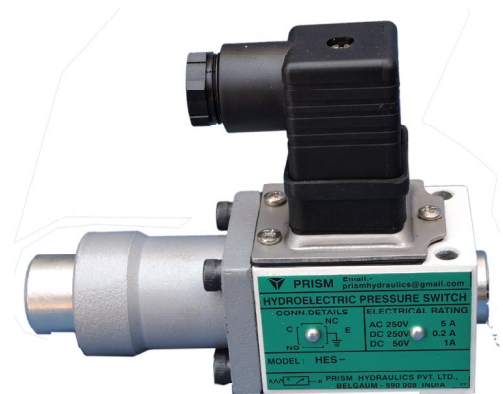


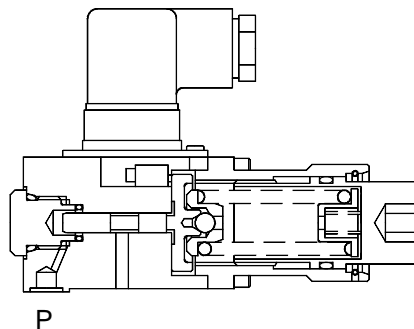
## HYDRO - ELECTRIC PRESSURE SWITCH MODEL : HES

### Description

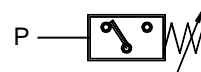
Spring loaded sealed piston construction.  
Encapsulated design for protection against dirt.  
Non adjustable differential type.  
Three mounting styles viz Subplate, Face and Threaded.  
Four pressure ranges adjustable upto 50, 100, 350 & 420 bar.  
Plug-in connector conforming to DIN 43650 / ISO 4400 for electrical connection as standard feature.  
Transparent plug-in connector is available with LED.



### Section



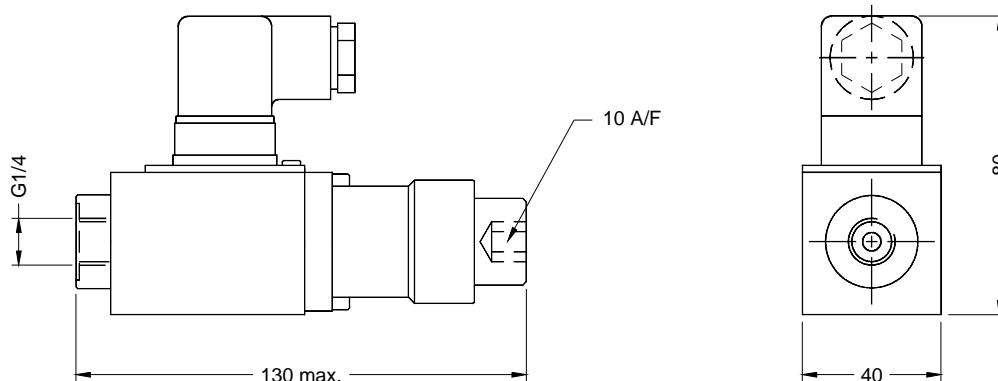
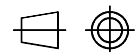
### Hydraulic Symbol



### Unit Dimensions

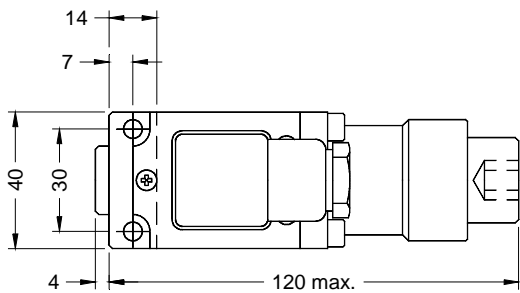
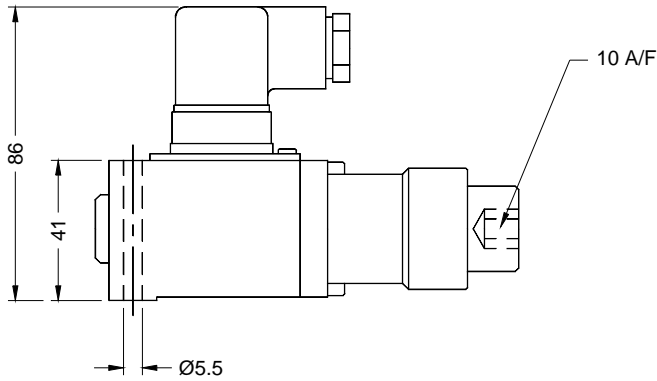
Threaded port body

Dimensions in mm.

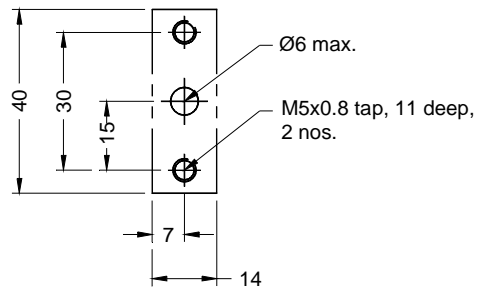


HYDRO - ELECTRIC PRESSURE SWITCH MODEL : HES

Subplate mounting

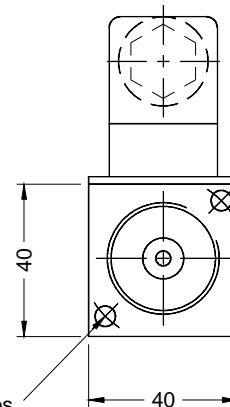
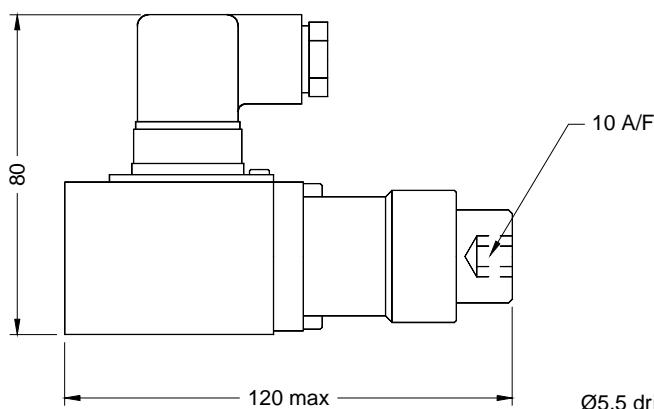


Mounting interface



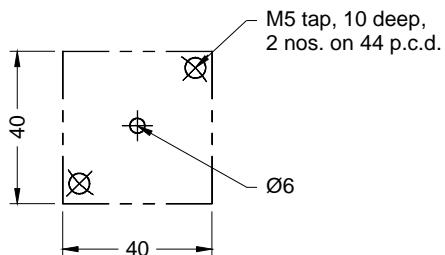
Valve fixing screws M5x50L  
 Tightening torque 9 Nm

Face mounting body



Ø5.5 drill, 2 Nos.  
 on 44 p.c.d. for mounting

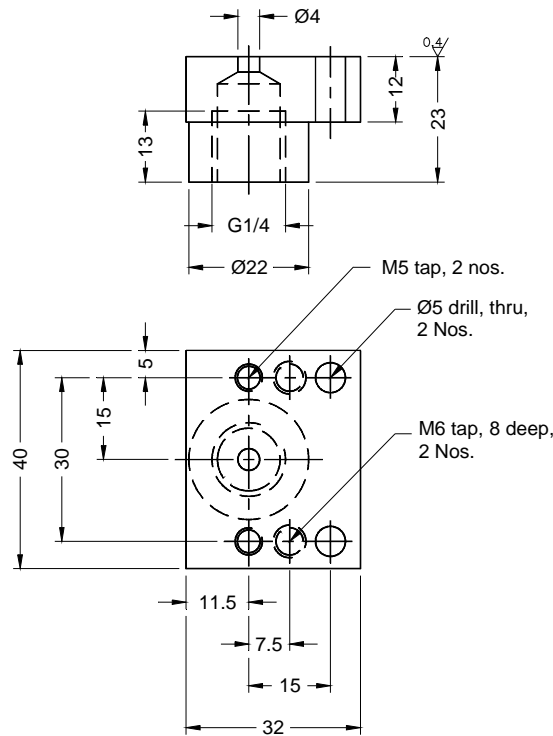
Mounting interface



Valve fixing screws M5x75L  
 Tightening torque 9 Nm

HYDRO - ELECTRIC PRESSURE SWITCH MODEL : HES

Subplate



Note :- Subplate to be ordered seperately.  
Ordering code for subplate HESG01

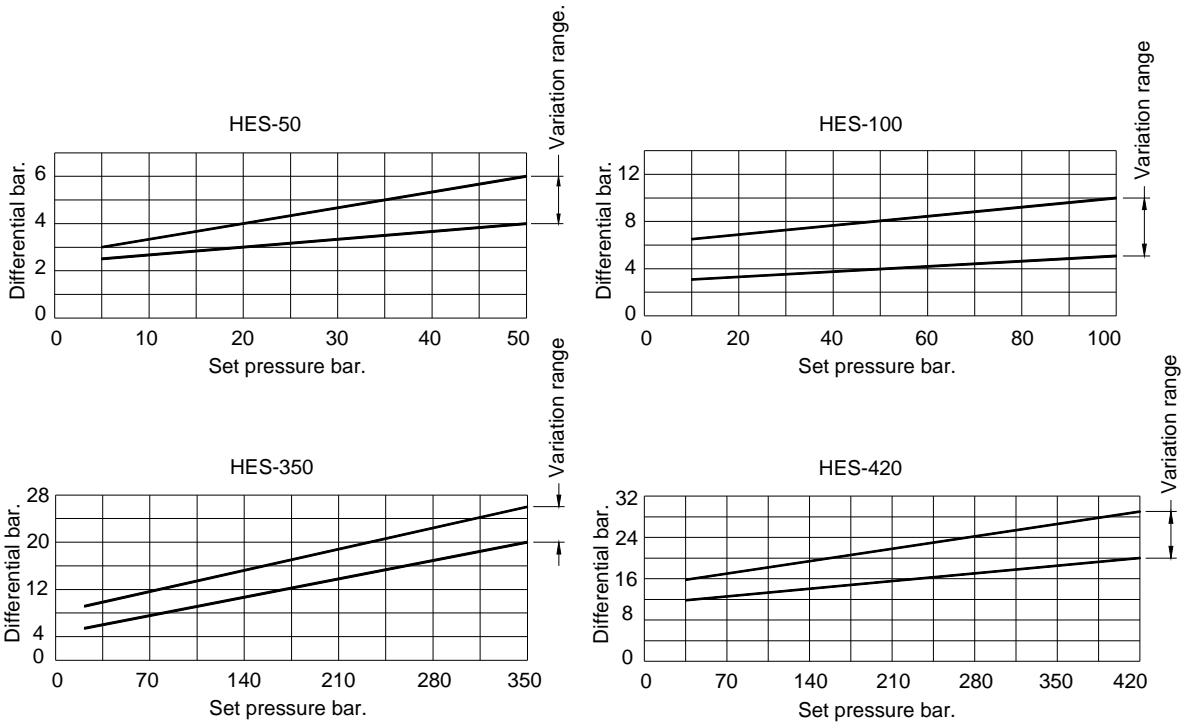
Technical Specifications

Construction . . . . .	Spring loaded sealed piston type
Mounting style . . . . .	Subplate,Face & Threaded type
Interface . . . . .	Factory standard
Mounting position . . . . .	Optional.
Hydraulic medium . . . . .	Mineral oil
Viscosity range . . . . .	10 to 380 cSt
Fluid temperature range . . . . .	-20 to +70 degree celcius
Oil cleanliness requirement . . . . .	As per I.S.O. 16/13
Maximum operating pressure . . . . .	420 bar for all models
Pressure ranges available . . . . .	Adjustable upto 50,100,350 & 420 bar
Switching pressure differential . . . . .	Refer graph
Switching frequency . . . . .	120 / min
Switching accuracy . . . . .	< 1%
Life . . . . .	1 million cycles min.
Electrical rating . . . . .	250 VAC 5.0 A 50 VAC 1.0 A 250 VDC 0.2 A
Electrical connection . . . . .	Plug-in connector conforms to DIN 43650, ISO 4400. Transperant plug-in connector with LED, for an indication when line pressure is above set pressure 230 VAC 5 A max. 24 VDC 1 A max.
Mass . . . . .	Pressure switch . . . 0.95 kg. Subplate . . . .0.13 kg.
Pressure settings ( bar ) . . . . .	

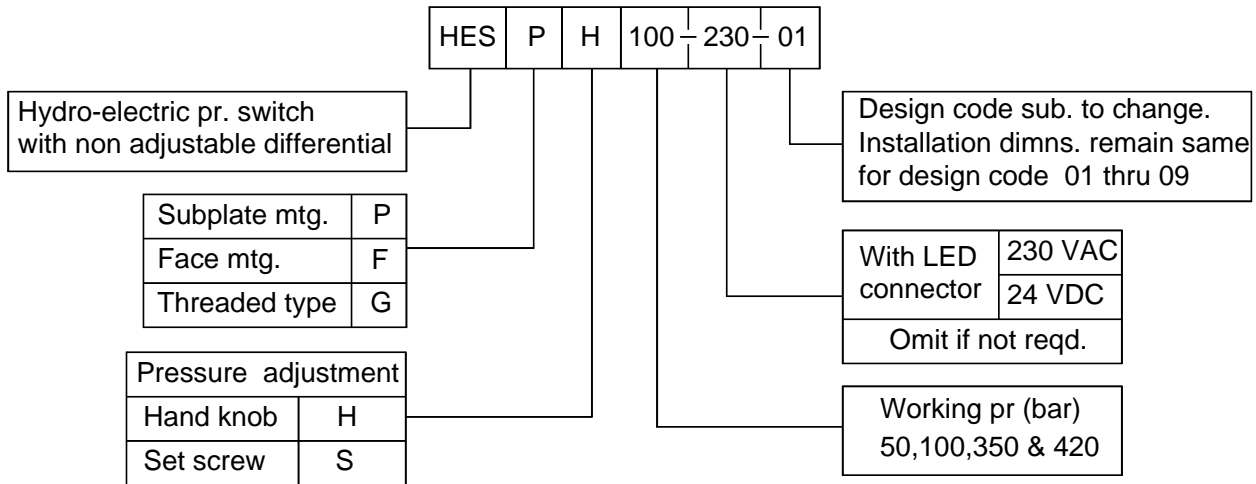
Model	Increasing pressure		Decreasing pressure	
	Min	Max	Min	Max
HES-50	8	50	5	44
HES-100	14	100	10	90
HES-350	25	350	20	330
HES-420	28	420	22	390

HYDRO - ELECTRIC PRESSURE SWITCH MODEL : HES

Switching pressure differential graph



Ordering Code



All rights reserved  
subject to change.