

THROTTLE / CHECK VALVE (MODULAR CONSTRUCTION) MODEL: MTCV

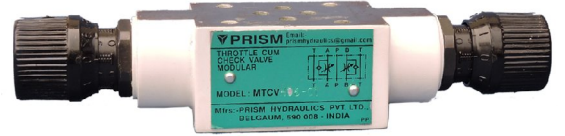
Description

These are double throttle/check valves in sandwich plate design.

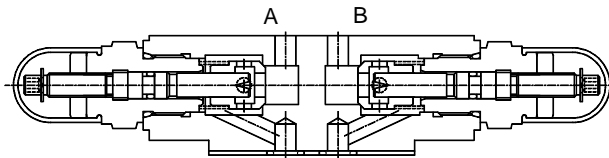
Non pressure compensated.

Can be used for meter-in or meter-out applications.

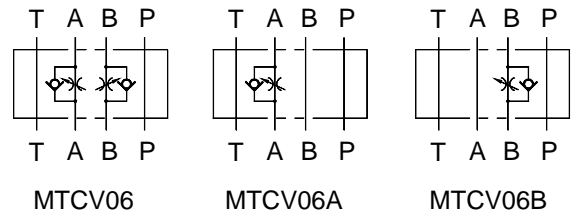
Interface conforms to ISO 4401-AB-03-4-A, IS 10187, DIN 24340.



Section

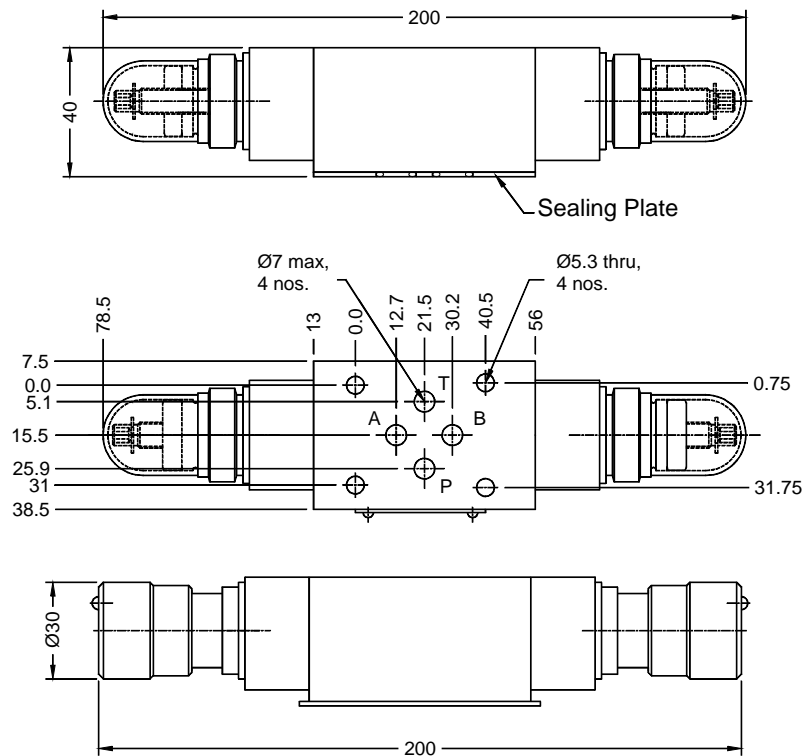


Hydraulic Symbol



Unit Dimensions

Dimensions in mm.



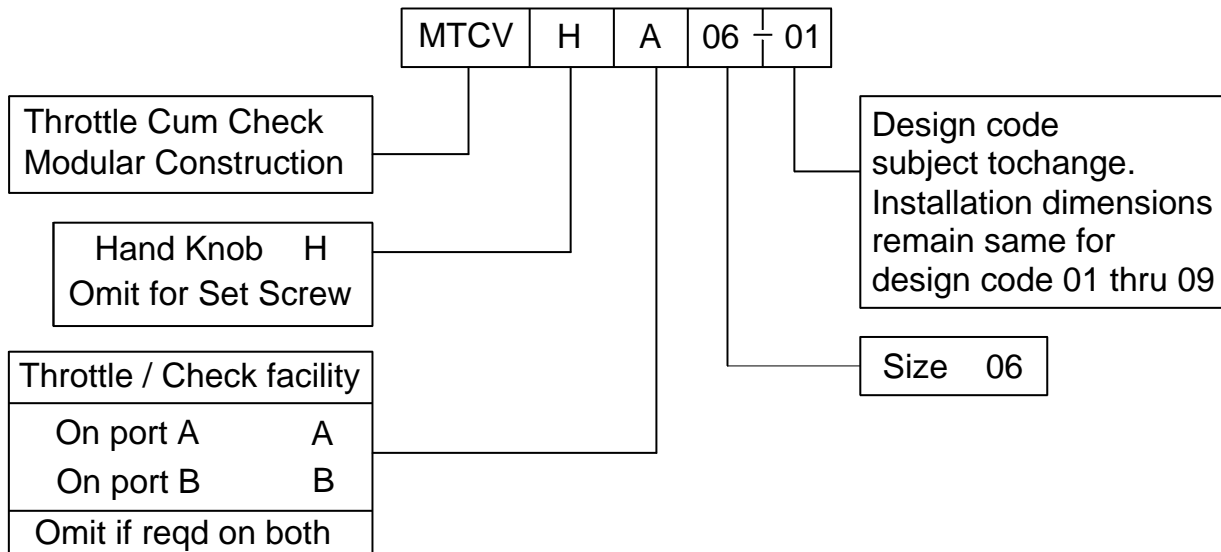
Note :- Rotate valve around its axis by 100° to convert from METER-IN control to METER-OUT control.

THROTTLE / CHECK VALVE (MODULAR CONSTRUCTION) MODEL : MTCV

Technical Specifications.

Construction	Modular, spool type, Non pressure compensated.
Mounting	Modular type, conforming to IS 10187 ISO 4401-AB-03-4-A, DIN 24340.
Mounting position	Optional.
Direction of flow	Free flow for ports A & B in one direction. Adjustable throttled flow in opposite direction. For ports P & T free flow in either direction.
Operating pressure	315 bar for all ports.
Viscosity range	10 cSt to 380 cSt.
Fluid temperature range	-10 °c to + 80 °c
Nominal flow handling capacity	35 l / min.
Mass	1.1 kg.

Ordering Code



All rights reserved
subject to revision.