

## DOUBLE PILOT OPERATED CHECK VALVE MODEL :- 2CIV10

### 1 Description

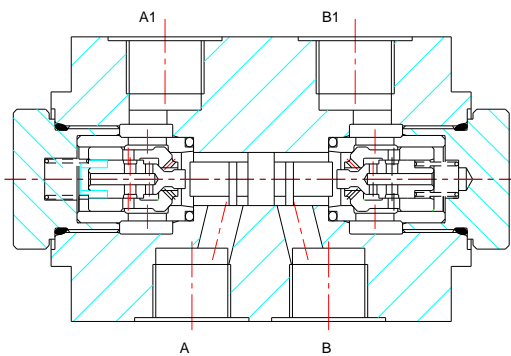
These valves are available with pilot operated check valve facility on either A or B or both A and B threaded ports.

The hydraulic opening operation for free flow in reverse direction is achieved by means of internal pilot pressure available from the other working port.

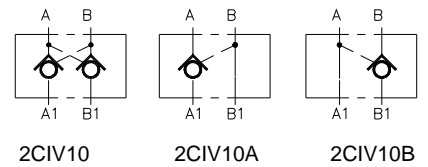
To ensure proper closure of both valve poppets, both user connections should be unloaded when control valve is in the neutral position by connecting with the return line.



### 2 Section

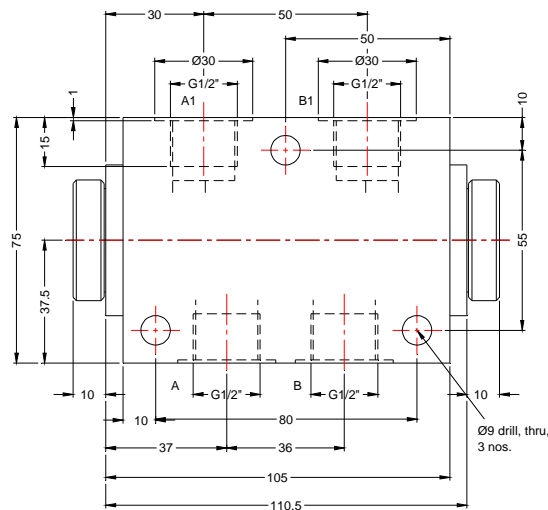
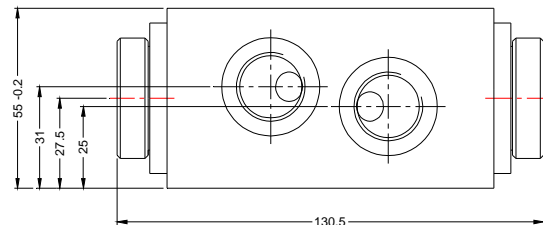


### Hydraulic Symbol



### 3 Unit Dimensions

Dimensions in mm.



DOUBLE PILOT OPERATED.CHECK VALVE MODEL :- 2CIV10

4 Technical Specifications

Construction .....	Threaded, Seat type, Internally pilot operated
Mounting .....	Threaded type,conforming to factory standard
Mounting position .....	.Optional
Direction of Flow .....	Free Flow from port A to A1 and B to B1 Piloted open flow in opposite direction
Operating pressure .....	315 bar for all ports.
Cracking pressure .....	1 bar
Area ratio - Pilot piston : Poppet Seat .....	4 : 1
Viscosity range .....	10 cSt to 380 cSt
Fluid cleanliness requirement .....	As per ISO code 16/13
Nominal flow handling capacity .....	80 l / min.

5.Ordering code

